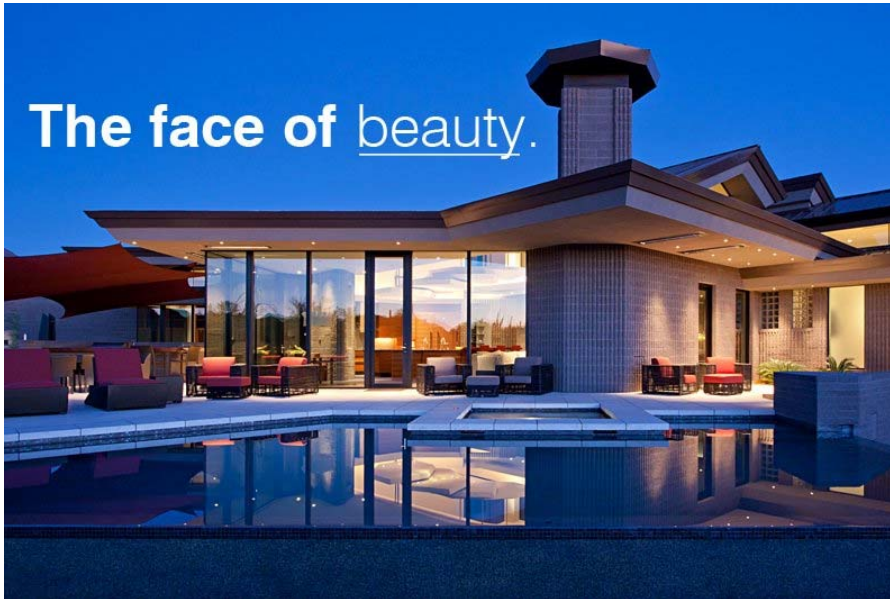




The face of masonry.

eNewsletter

June 2012



In This Issue

[Project Profile](#)

[Featured Product](#)

[CE Lunch & Learn](#)

[Online CE Course](#)

[CE Road Show](#)

**Profile: Desert Arrow
Scottsdale, AZ**

Winner of the 2012 National Concrete Masonry Association (NCMA) Residential Design Award of Excellence, the 5502-square foot residential home known as Desert Arrow is part of the 8,000-acre DC Ranch planned community of Scottsdale, AZ. The glass and masonry design allows the home to become one with the natural landscape. Various applications of rough-hewn [Mesastone®](#) masonry mimic the properties of the surrounding McDowell Mountains and flow seamlessly from the exterior into the interior of the home. In addition to creating a congruent dimensional design, extending the masonry walls throughout the interior created a thermal lag, thus offering natural cooling by day and warmth by night. The angular design of the structure and roofline mimics both the profile of the mountainous backdrop and the angular nature of the masonry.

Design Firm: Swaback Partners, pllc - Scottsdale, AZ

Lead Architect: Vermpm D. Swaback. FAIA. FAICP

General Contractor: Kitchell Contractors - Phoenix, AZ

Mason Contractor: Sutter Masonry Components - El Mirage, AZ



Featured Product

Trenwyth® Mesastone®

Mesastone textured masonry units are pre-finished architectural concrete blocks that are manufactured with colored aggregates, pigmented uniformly, and finished to an even texture. Available in a variety of [shapes](#), [colors](#), and scoring patterns, its textured surface resembles split face block, but is more uniform, easier to lay-up, and provides a straighter sight line to your buildings.

For the Desert Arrow project, four different applications of Mesastone were used to create a unique three-dimensional design:

- 8"x4"x16" site walls with a light sand blast finish
- 8"x8"x16" fluted exterior and interior walls with a light sand finish
- Custom relief fireplace accent blocks
- Custom smooth fireplace accent blocks



Continuing Education Opportunities

Lunch & Learn: Designing Tactics for Masonry Stone Products (Program Number: Tren-10, Credits: 1 Health, Safety, and Welfare)

The choice of concrete masonry in the building's envelope provides a durable and permanent material that will last the life of a building. In this course, learn about the following:

- The variety of masonry and stone veneer products available.
- Design options that affect choices.
- Achieving variations in texture, pattern, and color through modular design.
- Critical detailing and project management.
- Preventing moisture penetration.

Scheduling contact: John Cicciarelli (602) 513-6692 or John.Cicciarelli@oldcastle.com.

Online Course: Excellence in Single-Wythe Concrete Masonry (AEC113)

This online course offered by AEC Daily provides an overview of the proper design of single-wythe concrete masonry walls and qualifies for 1 CEU from a number of industry associations.

[Click here](#) to enroll in the online course.

Last Stop of the Belgard Commercial Traveling Road Show

The Belgard Commercial experts will make their final stop of the Traveling Road Show in Orlando, Florida, on July 13 and 14. Don't miss the opportunity to earn up to five Continuing Education credits from several industry associations, including the American Institute of Architects (AIA), Green Building Certification Institute (GBCI) and others. Presentations include design techniques and information on a variety of topics including sustainable site pavement systems, retaining walls, the hardscape industry, green construction with concrete masonry, and more. For additional information or to register for the event, click the link below.

[July 13 & 14 - Orlando, FL](#)



TRENWYTH™ | QUIK-BRIK® | ENDURAMAX™ | ARTISAN MASONRY STONE VENEERS™ | AMERIMIX®

Oldcastle Architectural is the leading North American manufacturer of concrete masonry, lawn, garden and paving products and is a regional leader in clay brick.

