

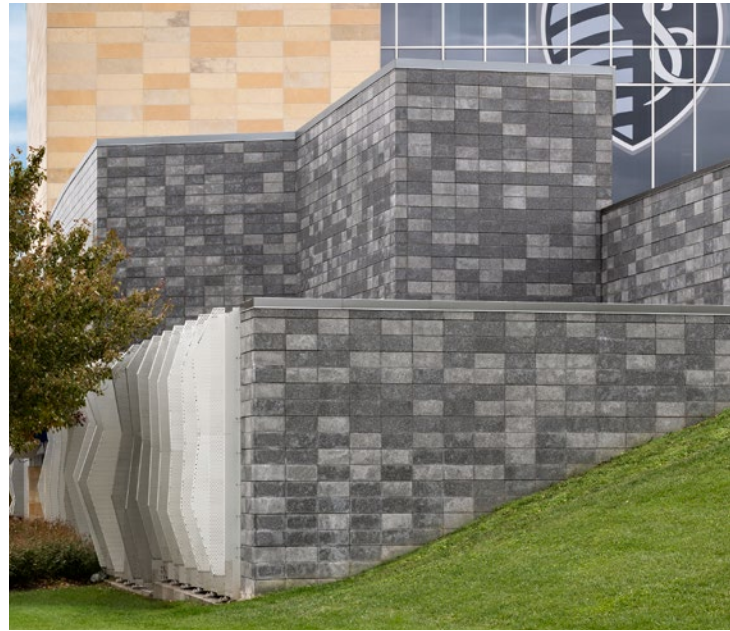
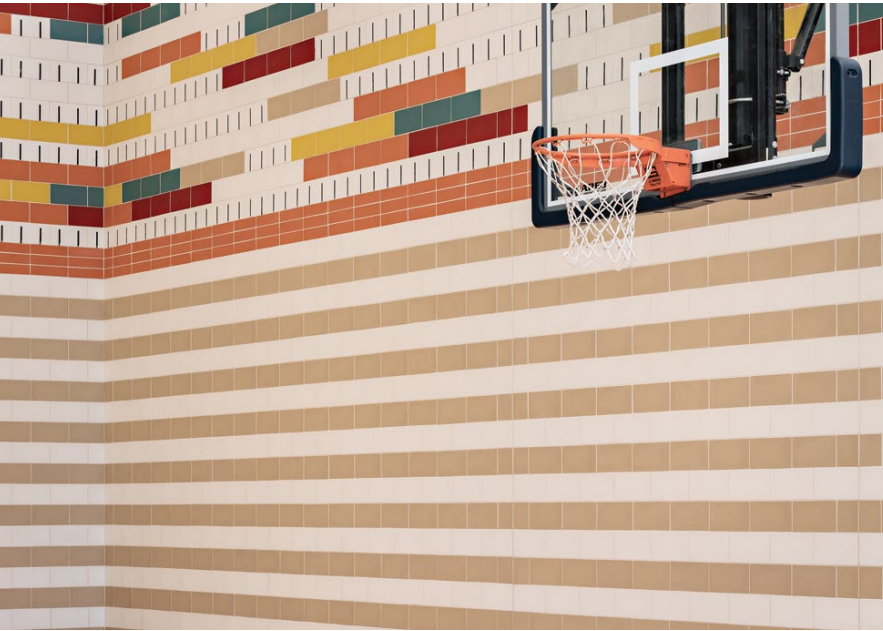
VERASTONE®

TEXTURAL GROUND-FACE AESTHETICS PAIRED WITH PEAK SUSTAINABILITY

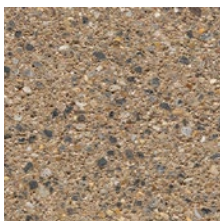
Verastone recycled concrete blocks are colored, pre-finished architectural blocks with one or more faces ground to show the varied colors of the natural aggregates. During production, a clear satin gloss acrylic is applied to the exposed faces to accentuate the natural beauty of the aggregates and enhance moisture resistance.



ECHELON
MASONRY



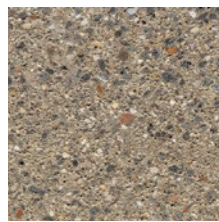
🔹 COLOR & TEXTURES



Cambria



Superior



Chardonnay



Austin



ADDITIONAL COLORS AVAILABLE

Scan the QR code to see your full regional color offering.

🕒 FEATURES & BENEFITS

- One-step installation
- Durable, strong and maintenance free
- Mold & moisture resistant
- Over-sized units available
- Design flexibility with a wide variety of colors, shapes, and scoring patterns
- Terrazzo-like finish is highly graffiti resistant

📊 TECHNICAL INFORMATION

ASTM C1634 - Specification for solid dry-cast, concrete facing units. All tests performed in accordance with ASTM C140.

📏 SHAPES & SIZES

Multiple shapes and sizes are available for this product. Please reach out to your sales representative for a complete list.