



MASONRY COLLECTION

SMOOTH FACE • GROUND FACE • MESASTONE • SPLIT FACE



OldcastleAPG
A CRH COMPANY

PACIFIC

TABLE OF CONTENTS

6	Smooth Face • Ground Face • Mesastone
10	Split Face
13	Cap & Veneer
15	Glossary



WHY MASONRY?

Get more inspiration on how you can
bring your next Echelon project to life.

EchelonMasonry.com



SUSTAINABILITY

Echelon Masonry is manufactured locally allowing you to achieve LEED credits for MRc2.



COST EFFICIENCY

Upfront construction costs don't tell the whole story. When all factors are taken into account, masonry is 5.6% more economical than building with wood.



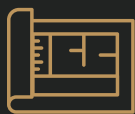
ENERGY

Echelon's patented Insultech System delivers R-16.2 performance, exceeding energy code requirements.



RESILIENCY

Annually, non-masonry structures under construction experience up to \$157M in fire damage. Specifying masonry construction can help prevent these losses.



DESIGN

No other material can replicate the masonry aesthetic or provide as much design flexibility in colors, textures and finishes.

MESASTONE



SMOOTH FACE



VENEER • GROUND FACE



SMOOTH FACE • SPLIT FACE



MESASTONE



SPLIT FACE



SPLIT FACE



SPLIT FACE



SMOOTH FACE • GROUND FACE • MESASTONE

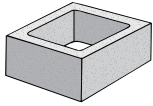
THESE COLLECTIONS ARE PERFECT FOR INTERIOR OR EXTERIOR APPLICATIONS THAT WILL STAND THE TEST OF TIME.

All Smooth Face CMUs are in stock unless indicated by (Special Order) below each drawing. All Ground Face and Mesastone CMUs are special order.

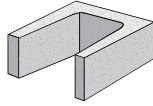


SMOOTH FACE • GROUND FACE • MESASTONE

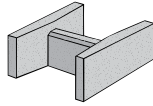
16" Wide Wall / 8" High Units



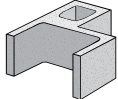
16 x 8 x 16
Single Cell Unit



16 x 8 x 16
"U" Beam
(Special Order)

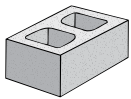


16 x 8 x 16
Double Open End
Bond Beam

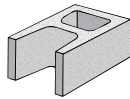


16 x 8 x 16
Open Center Pilaster
(Special Order)

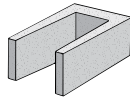
12" Wide Wall / 8" High Units



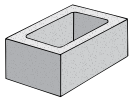
12 x 8 x 16
Standard



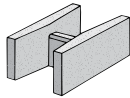
12 x 8 x 16
Open End Standard



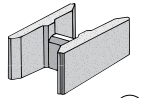
12 x 8 x 16
"U" Beam
(Special Order)



12 x 8 x 16
Single Cell Unit
(Special Order)



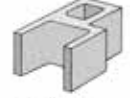
12 x 8 x 16
Double Open End
Bond Beam



12 x 8 x 16*
Grout Lock



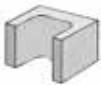
12 x 8 x 12
Single Cell Unit



12 x 8 x 16
Open Center Pilaster
(Special Order)



12 x 8 x 8
Half

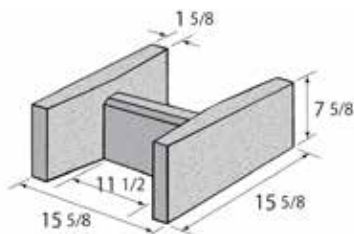


12 x 8 x 8
Open End Half

*Grout Lock: An open ended unit with notched and pointed face shell ends that slightly lap for a grout seal. No mortared head joint is required.

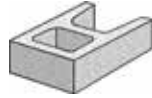
Dimensions and Size Note:

All CMUs are described in Nominal Dimensions (the actual measurement plus the thickness of the mortar joint) Actual measurements are "specified" dimensions. See example below:

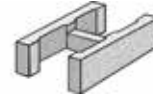


Nominal:
16" x 8" x 16"
Specified:
15 5/8" x 7 5/8" x 15 5/8"

12" Wide Wall / 6" High Units

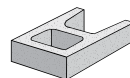


12 x 6 x 16
Open End Standard
(Special Order)

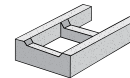


12 x 6 x 16
Double Open End
Bond Beam
(Special Order)

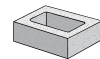
12" Wide Wall / 4" High Units



12 x 4 x 16
Open End Standard

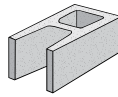


12 x 4 x 16
Open End Bond beam

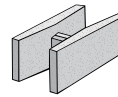


12 x 4 x 8
Half
(Cut to Order)

10" Wide Wall / 8" High Units



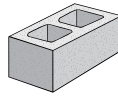
10 x 8 x 16
Open End Standard



10 x 8 x 16
Double Open End
Bond Beam



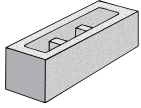
10 x 8 x 8
Half



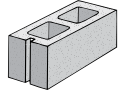
10 x 8 x 16
Standard (Special Order)

SMOOTH FACE • GROUND FACE • MESASTONE

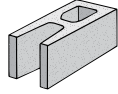
8" Wide Wall | 8" High Units



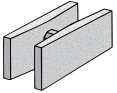
8 x 8 x 24
Standard
(Special Order)



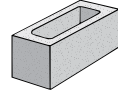
8 x 8 x 16
Standard



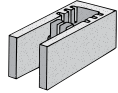
8 x 8 x 16
Open End Standard



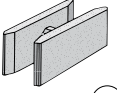
8 x 8 x 16
Double Open End
Bond Beam



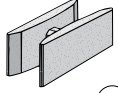
8 x 8 x 16
Single Cell
(Special Order)



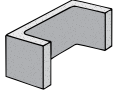
8 x 8 x 16
Knock Out



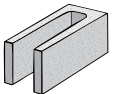
8 x 8 x 16*
Grout Lock



8 x 8 x 16*
Speed



8 x 8 x 16
Pilaster Alternate
(Special Order)



8 x 8 x 16
'U' Beam



8 x 8 x 8
Half

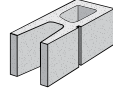


8 x 8 x 8
Open End

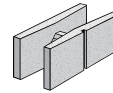
*Grout Lock: An open ended unit with notched and pointed face shell ends that slightly lap for a grout seal. No mortared head joint is required.

8" Wide Wall | 8" High Units

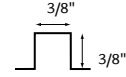
Scored Single Square Score



8 x 8 x 16
Open End Standard
Single Square Score 1 side
(Special Order)



8 x 8 x 16
Double Open End Bond Beam
Single Square Score 1 side
(Special Order)



Available in different sizes and multiple faces

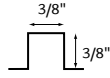
Scored Three Square Score



8 x 8 x 16
Standard - Three Square
Score 1 side - 1 end
(Special Order)

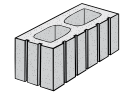


8 x 8 x 16
Double Open End Bond Beam
Three Square Score 1 side
(Special Order)

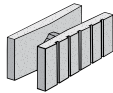


Available in different sizes and multiple faces

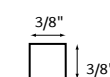
Scored Five Square Score



8 x 8 x 16
Standard - Five Square
Score 1 side - 1 end
(Special Order)



8 x 8 x 16
Double Open End Bond Beam
Five Square Score 1 side
(Special Order)



Available in different sizes and multiple faces

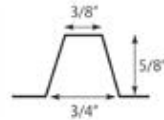
Scored Five Tapered Score



8 x 8 x 16
Standard - Five Tapered
Score 1 side - 1 end
(Special Order)

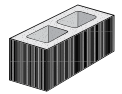


8 x 8 x 16
Double Open End Bond Beam
Five Tapered Score - 1 side
(Special Order)

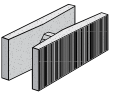


Available in different sizes and multiple faces

Combed Face



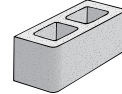
8 x 8 x 16
Standard Combed Face
1 side - 1 end
(Special Order)



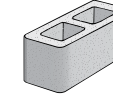
8 x 8 x 16
Double Open End Bond Beam
Combed Face
1 side
(Special Order)

Combed Face Texture also available on 2 sides

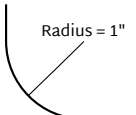
Bull Nose



8 x 8 x 16
Standard
Single Bull Nose
(Special Order)



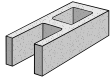
8 x 8 x 16
Standard
Double Bull Nose
(Special Order)



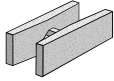
Available in different sizes and multiple faces

SMOOTH FACE • GROUND FACE • MESASTONE

8" Wide Wall | 6" High Units



8 x 6 x 16
Open End Standard



8 x 6 x 16
Double Open End
Bond Beam



8 x 6 x 8
Half
(Cut to Order)

4" Wide Wall | 8" High Units

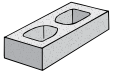


4 x 8 x 16
Standard
(Medium Weight Only)

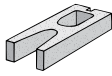


4 x 8 x 8
Half
(Cut to Order in Medium Weight Only)

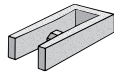
8" Wide Wall | 4" High Units



8 x 4 x 16
Standard



8 x 4 x 16
Open End Standard
(Special Order)



8 x 4 x 16
Bond Beam Open End

4" Wide Wall | 4" High Units



4 x 4 x 16
Standard
(Special Order)

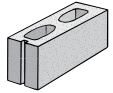


4 x 4 x 8
Half
(Special Order)

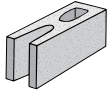


8 x 4 x 8
Half
(Cut to Order)

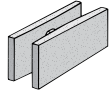
6" Wide Wall | 8" High Units



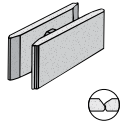
6 x 8 x 16
Standard



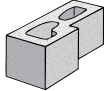
6 x 8 x 16
Open End Standard
(Special Order)



6 x 8 x 16
Double Open End
Bond Beam



6 x 8 x 16
Grout Lock

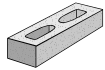


6 x 8 x 16
Corner Return

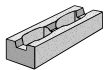


6 x 8 x 8
Half

6" Wide Wall | 4" High Units



6 x 4 x 16
Standard



6 x 4 x 16
Bond Beam



6 x 4 x 8
Half
(Cut to Order)



SPLIT FACE

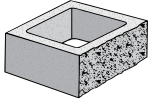
A BEAUTIFUL, ROUGH-HEWN TEXTURE THAT NATURALLY VARIES FROM UNIT TO UNIT.

All Split Face CMUs are in stock unless indicated by *(Special Order)* in the description below each drawing.

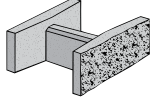


SPLIT FACE

16" Wide Wall | 8" High Units

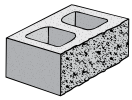


16 x 8 x 16
Single Cell
Split Face - 1 side
(Special Order)

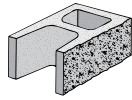


16 x 8 x 16
Double Open End Bond Beam
Split Face - 1 side
(Special Order)

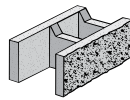
12" Wide Wall | 8" High Units



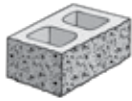
12 x 8 x 16
Standard
Split Face - 1 side
(Special Order)



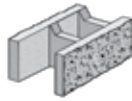
12 x 8 x 16
Standard Open End
Split Face - 2 sides
(Special Order)



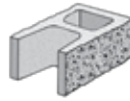
12 x 8 x 16
Open End Bond Beam
Split Face - 2 sides
(Special Order)



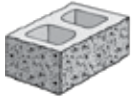
12 x 8 x 16
Standard
Split Face - 1 side - 1 end
(Special Order)



12 x 8 x 16
Open End Bond Beam
Split Face - 2 sides
(Special Order)



12 x 8 x 16
Open End Standard
Split Face - 2 sides
(Special Order)



12 x 8 x 16
Standard
Split Face - 2 sides - 1 end
(Special Order)



12 x 8 x 8
Half
Split Face - 1 side
(Special Order)



12 x 8 x 8
Half
Split Face - 1 side
- 1 end
(Special Order)

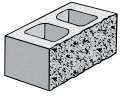


12 x 8 x 8
Half
Split Face - 2 sides
(Special Order)

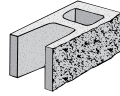


12 x 8 x 8
Half
Split Face - 2 sides - 1 end
(Special Order)

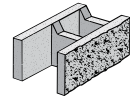
10" Wide Wall | 8" High Units



10 x 8 x 16
Standard
Split Face - 1 side
(Special Order)



10 x 8 x 16
Standard Open End
Split Face - 1 side
(Special Order)



10 x 8 x 16*
Open End Bond Beam
Split Face - 1 side
(Special Order)



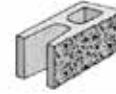
10 x 8 x 8
Half
Split Face - 1 side
(Special Order)

*10 x 8 x 16 is not available in Split Face-1 side -1 end

8" Wide Wall | 8" High Units



8 x 8 x 16
Standard
Split Face - 1 side



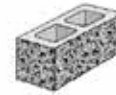
8 x 8 x 16
Standard Open End
Split Face - 1 side



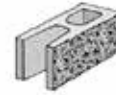
8 x 8 x 16
Open End Bond Beam
Split Face - 1 side



8 x 8 x 16
Standard
Split Face - 1 end
(Special Order)



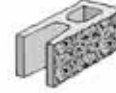
8 x 8 x 16
Standard
Split Face - 1 side - 1 end



8 x 8 x 16
Standard Open End
Split Face - 2 sides



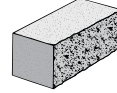
8 x 8 x 16
Open End Bond Beam
Split Face - 2 sides



8 x 8 x 16
Standard Open End
Split Face
2 sides - 1 end



8 x 8 x 16
Standard Split Face
1 side - 2 ends



8 x 8 x 16
Solid
Split Face - 1 side
(Special Order)



8 x 8 x 8
Standard
Split Face
1 side



8 x 8 x 8
Standard
Split Face
1 side - 1 end
(Cut to Order)



8 x 8 x 8
Standard
Split Face
2 sides
(Cut to Order)



8 x 8 x 8
Standard
Split Face
2 sides - 1 end
(Cut to Order)



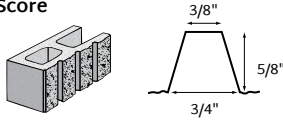
SPLIT FACE

8" Wide Wall | 8" High Units | Scored

Scored Three Tapered Score

8 x 8 x 16

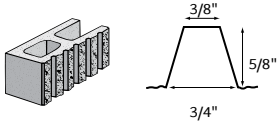
Open End Standard
Split Face - 1 side
3 Tapered Scores
(Special Order)



Scored Five Tapered Score

8 x 8 x 16

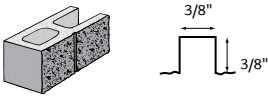
Open End Standard
Split Face - 1 side
5 Tapered Scores
(Special Order)



Scored Single Square Score

8 x 8 x 16

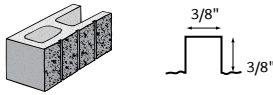
Open End Standard
Split Face - 1 side
Single Square Score
(Special Order)



Scored Three Square Score

8 x 8 x 16

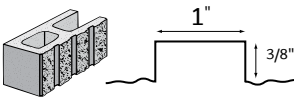
Open End Standard
Split Face - 1 side
3 Square Scores
(Special Order)



Scored Three-One Shallow Score

8 x 8 x 16

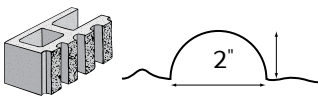
Open End Standard
Split Face - 1 side
3 - 1" Shallow Scores
(Special Order)



Fluted Three Round Flute 2" x 1"

9 x 8 x 16

Open End Standard
Split Face - 1 side
3 Rounded Flutes
(Special Order)



8" Wide Wall | 4" High Units



8 x 4 x 16
Standard
Split Face - 1 side
(Special Order)



8 x 4 x 16
Open End Standard
Split Face - 1 side
(Special Order)



8 x 4 x 16
Bond Beam
Split Face - 1 side
(Special Order)



8 x 4 x 16
Standard
Split Face - 1 side - 1 end
(Special Order)



8 x 4 x 16
Open End Standard
Split Face - 2 sides
(Special Order)



8 x 4 x 16
Open End Standard
Split Face - 2 sides - 1 end
(Special Order)



8 x 4 x 8
Split Face - 1 side
(Special Order)

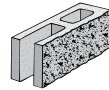


8 x 4 x 8
Split Face - 1 side - 1 end
(Special Order)

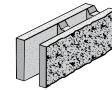


8 x 4 x 8
Split Face - 2 sides - 1 end
(Special Order)

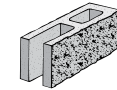
6" Wide Wall | 8" High Units



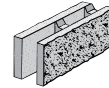
6 x 8 x 16
Standard Open End
Split Face - 1 side
(Special Order)



6 x 8 x 16
Bond Beam Open End
Split Face - 1 side
(Special Order)



6 x 8 x 16
Standard Open End
Split Face - 2 sides
(Special Order)



6 x 8 x 16
Bond Beam Open End
Split Face - 2 sides
(Special Order)



6 x 8 x 8
Split Face - 1 side
(Special Order)



6 x 8 x 8
Split Face - 2 sides
(Special Order)

CAP & VENEER

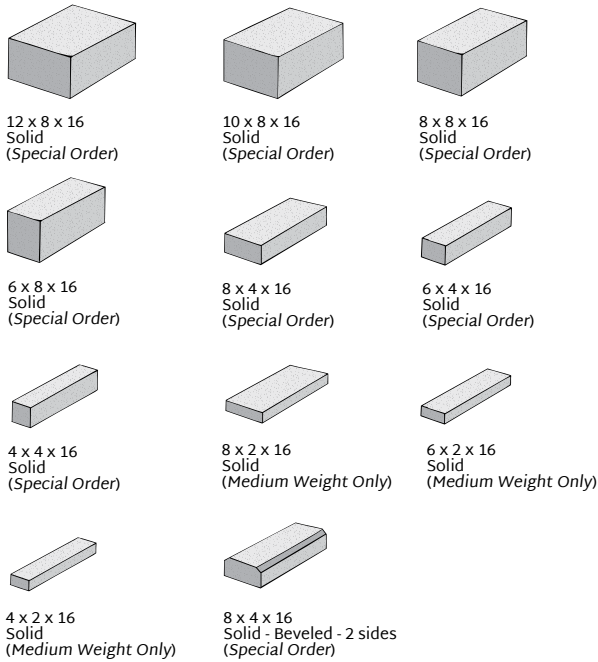
OUR FINISHING PIECES AND ADHERED VENEER CMUs ARE AVAILABLE IN COORDINATING FINISHES TO PROVIDE A DURABLE, COHESIVE LOOK.

All Cap and Venner CMUs are in stock unless indicated by (Special Order) below each drawing.

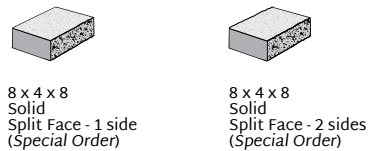


CAP • VENEER

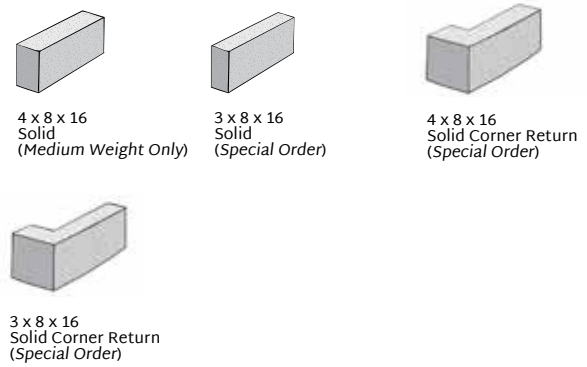
Cap | Smooth Face • Ground Face • Mesastone



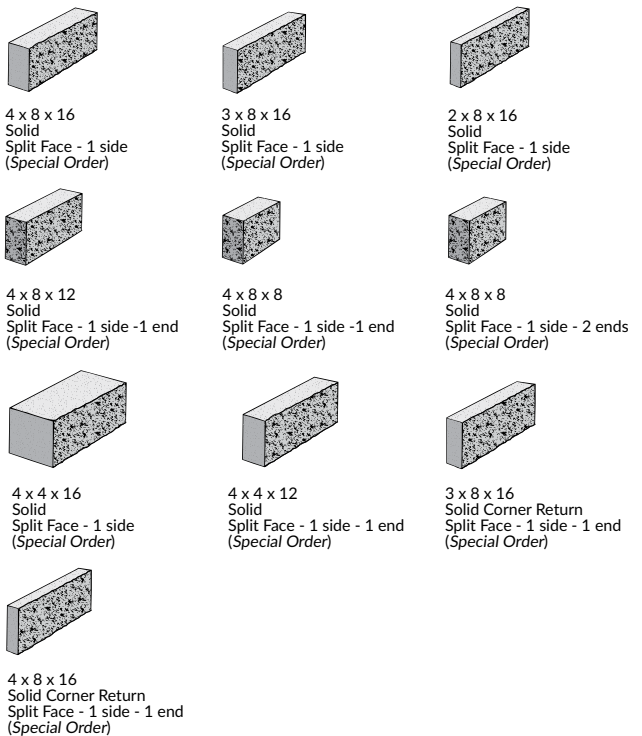
Cap | Split Face



Veneer | Smooth Face • Ground Face • Mesastone



Veneer | Split Face



Concrete Masonry Units Glossary and Texture Descriptions

A.P.U.:

All Purpose Unit; a single open end unit with removable bonds at corners. A.P.U. are also called "Universals" or "Knock-outs."

Bond Beam:

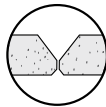
A hollow unit with depressions to form a continuous horizontal channel for reinforcing steel and grout.

D.O.E.:

Double Open End; a hollow unit with both ends open to better accommodate vertical steel and grout.

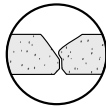
Speed Block:

A double open ended unit with pointed face shell ends that butt together. No mortared head joint is required.



Grout Lock:

A double open ended unit with notched and pointed face shell ends that slightly lap for a grout seal. No mortared head joint is required.



Pilaster Block:

Special designed units for use in construction of pilasters and columns to help keep units in bond pattern and better accommodate reinforcing.

Corner Return:

Special units to help maintain bond at corners.

Sash Block:

Units with a vertical slot at the end of the units to receive windows, door frames and pre-molded expansion materials.

Scored Block:

Unit with vertical grooves to simulate additional mortar joints in the face of the block. Can be done in split face or smooth texture.

Fluted Block:

Unit with large deep flutes that project out 1-2". The flutes are rounded at the base of the projection.

Lintel Block:

An open ended, open cell unit typically used over openings. Sometime referred to as U-beam or a 16" unit may be called a horse collar. Textures Available from APG Pacific.

Smooth Face:

A Smooth Face unit is also a precision unit. Smooth standard texture stocked in large variety of shapes and sizes in gray and also available in other colors by special order.

Split Face:

Rough fractured stone looking face stocked in a variety of sizes, and multiple face split. Stocked in both gray and tan colors.

Ground Face:

A cutting process that removes a precise layer from the top surface only of the block exposing the natural colors of the aggregate in the concrete. Surface finish is very smooth.

Combed Face:

Has a series of small vertical grooves running down the face of the block. Available by special order only.

Mesastone:

A peening/etching process that removes cement paste from the surface and sub-surface of the block exposing the natural colors and contours of the aggregate in the concrete. Surface finish is slightly gritty.

Contact Oldcastle® APG Pacific for details
(408) 984-8800



PACIFIC

5787 Obata Way
Gilroy, CA 95020
408.984.8800

EchelonMasonry.com