

NOTES

1. WEATHER RESISTIVE BARRIER, SHEATHING AND WALL SUBSTRATE PER PROJECT SPECS & LOCAL BUILDING CODE
2. PROVIDE ANCHORS TO SUIT DESIGN REQUIREMENTS FOR MATERIAL AND INSTALLATION REQUIREMENTS.
3. PROVIDE MORTAR TO SUIT DESIGN REQUIREMENTS FOR MATERIAL AND INSTALLATION REQUIREMENTS.
4. INSTALL WEEP HOLES IN VENEER MASONRY AT 24" O.C. MAXIMUM AT ALL REQUIRED LOCATIONS.
5. INSTALL FLASHING AT LOCATIONS SHOWN IN PLANS AND IN STRICT ACCORDANCE WITH THE DETAILS AND THE BEST MASONRY FLASHING PRACTICES

Oldcastle Architectural

PROPRIETARY AND CONFIDENTIAL
THE INFORMATION CONTAINED IN THIS DRAWING IS
THE SOLE PROPERTY OF OLDCASTLE APG. ANY
REPRODUCTION IN PART OR AS A WHOLE WITHOUT
THE WRITTEN PERMISSION OF OLDCASTLE APG IS
PROHIBITED



ECHELON™

DRAWING TITLE:

FOUNDATION DETAIL

DESCRIPTION

BRICK LEDGE - ABOVE GRADE

PRODUCT:

ARTISAN - WATERFORD STONE

STRUCTURE SUBSTRATE:

VARIES PER PROJECT SPECS

0	9/29/2015	ORIGINAL ISSUE		JS	-
REV	DATE	REVISION DESCRIPTION		BY	CHK
SCALE:		DRAWING NUMBER:			
NOT TO SCALE		ARW - 1A			

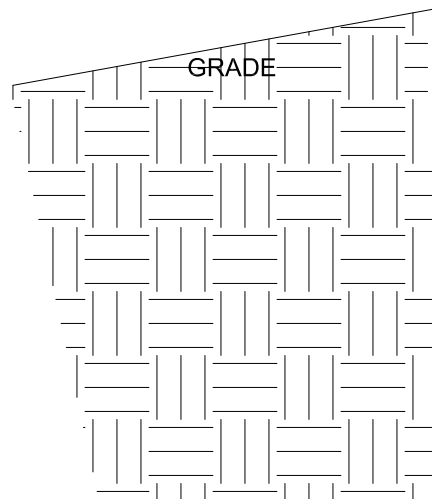
MORTAR PER PROJECT SPECS
AND LOCAL BUILDING CODES

WALL TIES. REFER TO PROJECT
SPEC AND LOCAL BUILDING
CODE

WATERFORD STONE

WEEPS PER PROJECTS PLANS &
SPECS

FLASHING PER PROJECT PLANS,
SPECS AND BEST MASONRY
FLASHING PRACTICES



MORTAR BACKFILL

CONCRETE FOUNDATION

NOTES

1. WEATHER RESISTIVE BARRIER, SHEATHING AND WALL SUBSTRATE PER PROJECT SPECS & LOCAL BUILDING CODE
2. PROVIDE ANCHORS TO SUIT DESIGN REQUIREMENTS FOR MATERIAL AND INSTALLATION REQUIREMENTS.
3. PROVIDE MORTAR TO SUIT DESIGN REQUIREMENTS FOR MATERIAL AND INSTALLATION REQUIREMENTS.
4. INSTALL WEEP HOLES IN VENEER MASONRY AT 24" O.C. MAXIMUM AT ALL REQUIRED LOCATIONS.
5. INSTALL FLASHING AT LOCATIONS SHOWN IN PLANS AND IN STRICT ACCORDANCE WITH THE DETAILS AND THE BEST MASONRY FLASHING PRACTICES

MESH MASONRY SCREEN PER
PROJECT PLANS & SPECS

Oldcastle Architectural

PROPRIETARY AND CONFIDENTIAL
THE INFORMATION CONTAINED IN THIS DRAWING IS
THE SOLE PROPERTY OF OLDCASTLE APG. ANY
REPRODUCTION IN PART OR AS A WHOLE WITHOUT
THE WRITTEN PERMISSION OF OLDCASTLE APG IS
PROHIBITED



ECHELON™

DRAWING TITLE:

FOUNDATION DETAIL

DESCRIPTION

BRICK LEDGE - BELOW GRADE

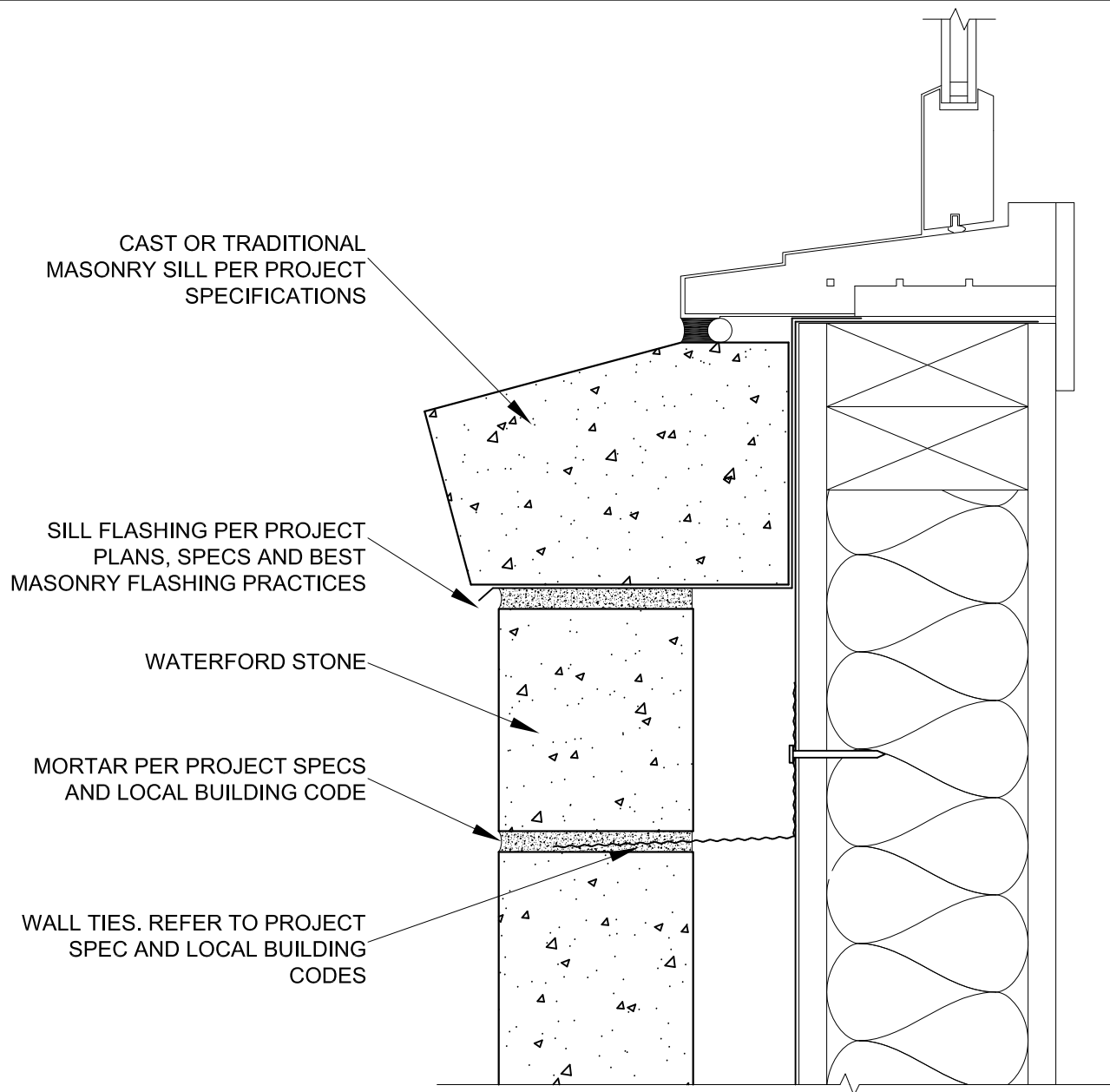
PRODUCT:

ARTISAN - WATERFORD STONE

STRUCTURE SUBSTRATE:

VARIES PER PROJECT SPECS

0	9/29/2015	ORIGINAL ISSUE		JS	-
REV	DATE	REVISION DESCRIPTION		BY	CHK
SCALE:		DRAWING NUMBER:			
NOT TO SCALE		ARW - 1B			



NOTES

1. WEATHER RESISTIVE BARRIER, SHEATHING AND WALL SUBSTRATE PER PROJECT SPECS & LOCAL BUILDING CODE
2. PROVIDE ANCHORS TO SUIT DESIGN REQUIREMENTS FOR MATERIAL AND INSTALLATION REQUIREMENTS.
3. PROVIDE MORTAR TO SUIT DESIGN REQUIREMENTS FOR MATERIAL AND INSTALLATION REQUIREMENTS.
4. INSTALL WEEP HOLES IN VENEER MASONRY AT 24" O.C. MAXIMUM AT ALL REQUIRED LOCATIONS.
5. INSTALL FLASHING AT LOCATIONS SHOWN IN PLANS AND IN STRICT ACCORDANCE WITH THE DETAILS AND THE BEST MASONRY FLASHING PRACTICES



PROPRIETARY AND CONFIDENTIAL
THE INFORMATION CONTAINED IN THIS DRAWING IS
THE SOLE PROPERTY OF OLDCASTLE APG. ANY
REPRODUCTION IN PART OR AS A WHOLE WITHOUT
THE WRITTEN PERMISSION OF OLDCASTLE APG IS
PROHIBITED



ECHELON™

DRAWING TITLE:

WINDOW SILL DETAIL

DESCRIPTION

CAST / TRADITIONAL SILL

PRODUCT:

ARTISAN - WATERFORD STONE

STRUCTURE SUBSTRATE:

VARIES PER PROJECT SPECS

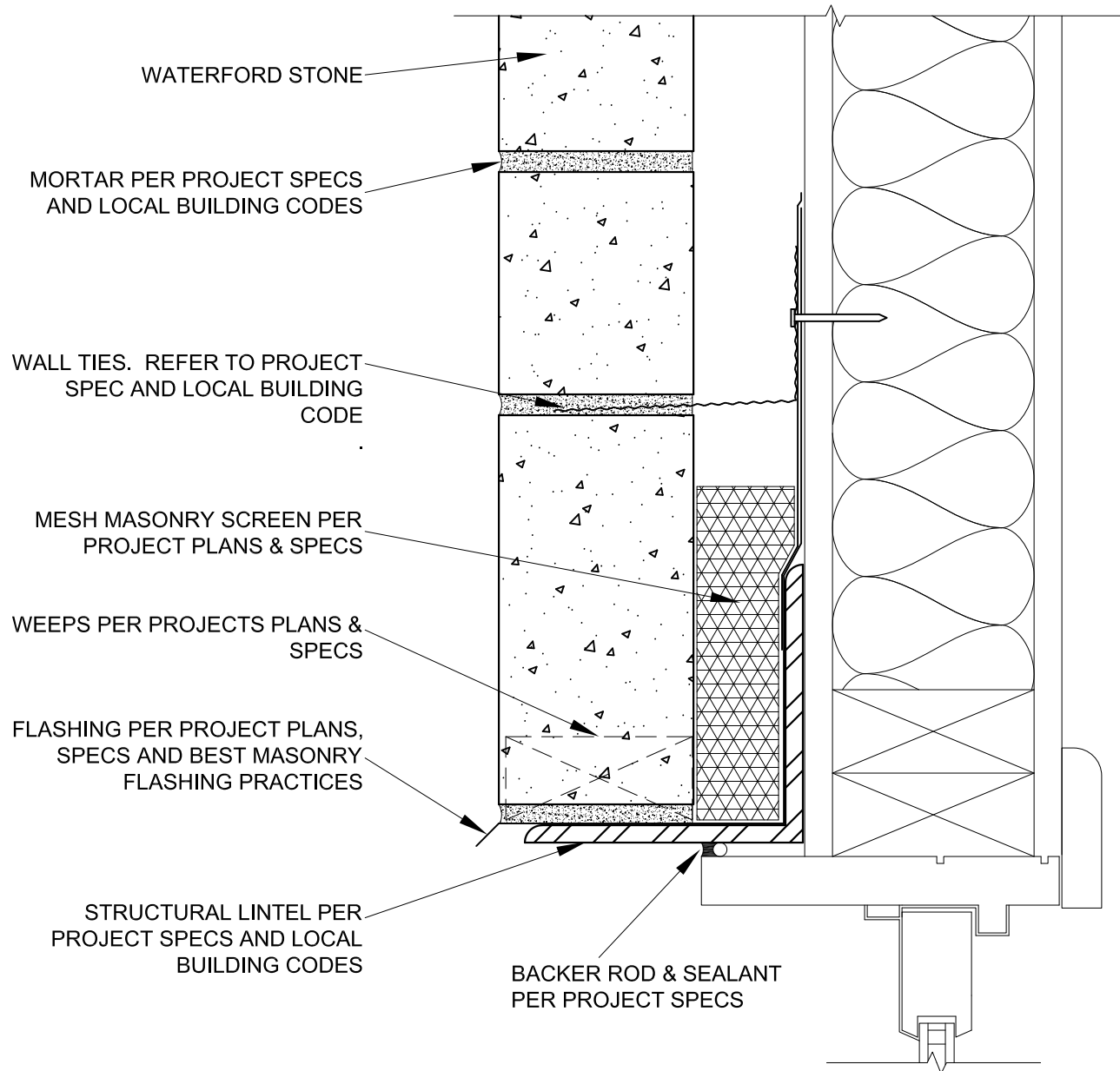
0	9/29/2015	ORIGINAL ISSUE		JS	-
REV	DATE	REVISION DESCRIPTION		BY	CHK

SCALE:

NOT TO SCALE

DRAWING NUMBER:

ARW - 2A



NOTES

1. WEATHER RESISTIVE BARRIER, SHEATHING AND WALL SUBSTRATE PER PROJECT SPECS & LOCAL BUILDING CODE
2. PROVIDE ANCHORS TO SUIT DESIGN REQUIREMENTS FOR MATERIAL AND INSTALLATION REQUIREMENTS.
3. PROVIDE MORTAR TO SUIT DESIGN REQUIREMENTS FOR MATERIAL AND INSTALLATION REQUIREMENTS.
4. INSTALL WEEP HOLES IN VENEER MASONRY AT 24" O.C. MAXIMUM AT ALL REQUIRED LOCATIONS.
5. INSTALL FLASHING AT LOCATIONS SHOWN IN PLANS AND IN STRICT ACCORDANCE WITH THE DETAILS AND THE BEST MASONRY FLASHING PRACTICES

Oldcastle Architectural

PROPRIETARY AND CONFIDENTIAL
THE INFORMATION CONTAINED IN THIS DRAWING IS
THE SOLE PROPERTY OF OLDCASTLE APG. ANY
REPRODUCTION IN PART OR AS A WHOLE WITHOUT
THE WRITTEN PERMISSION OF OLDCASTLE APG IS
PROHIBITED



ECHELON™

DRAWING TITLE:

WINDOW / DOOR HEAD DETAIL

DESCRIPTION

PRODUCT:

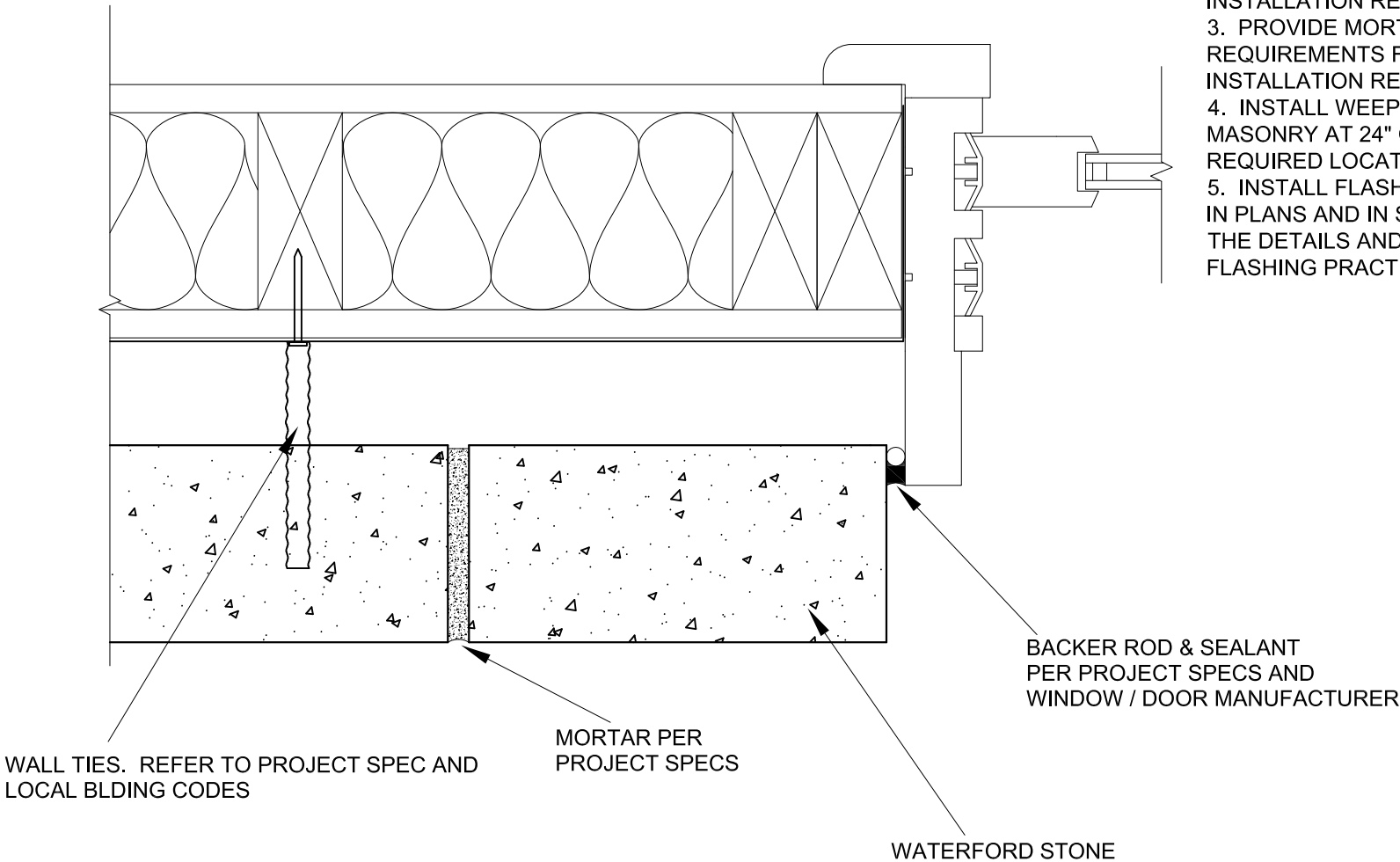
ARTISAN - WATERFORD STONE


STRUCTURE SUBSTRATE:

VARIES PER PROJECT SPECS


0	9/29/2015	ORIGINAL ISSUE		JS	-
REV	DATE	REVISION DESCRIPTION		BY	CHK
SCALE:		DRAWING NUMBER:			
NOT TO SCALE		ARW - 3A			

- NOTES**
1. WEATHER RESISTIVE BARRIER, SHEATHING AND WALL SUBSTRATE PER PROJECT SPECS & LOCAL BUILDING CODE
 2. PROVIDE ANCHORS TO SUIT DESIGN REQUIREMENTS FOR MATERIAL AND INSTALLATION REQUIREMENTS.
 3. PROVIDE MORTAR TO SUIT DESIGN REQUIREMENTS FOR MATERIAL AND INSTALLATION REQUIREMENTS.
 4. INSTALL WEEP HOLES IN VENEER MASONRY AT 24" O.C. MAXIMUM AT ALL REQUIRED LOCATIONS.
 5. INSTALL FLASHING AT LOCATIONS SHOWN IN PLANS AND IN STRICT ACCORDANCE WITH THE DETAILS AND THE BEST MASONRY FLASHING PRACTICES

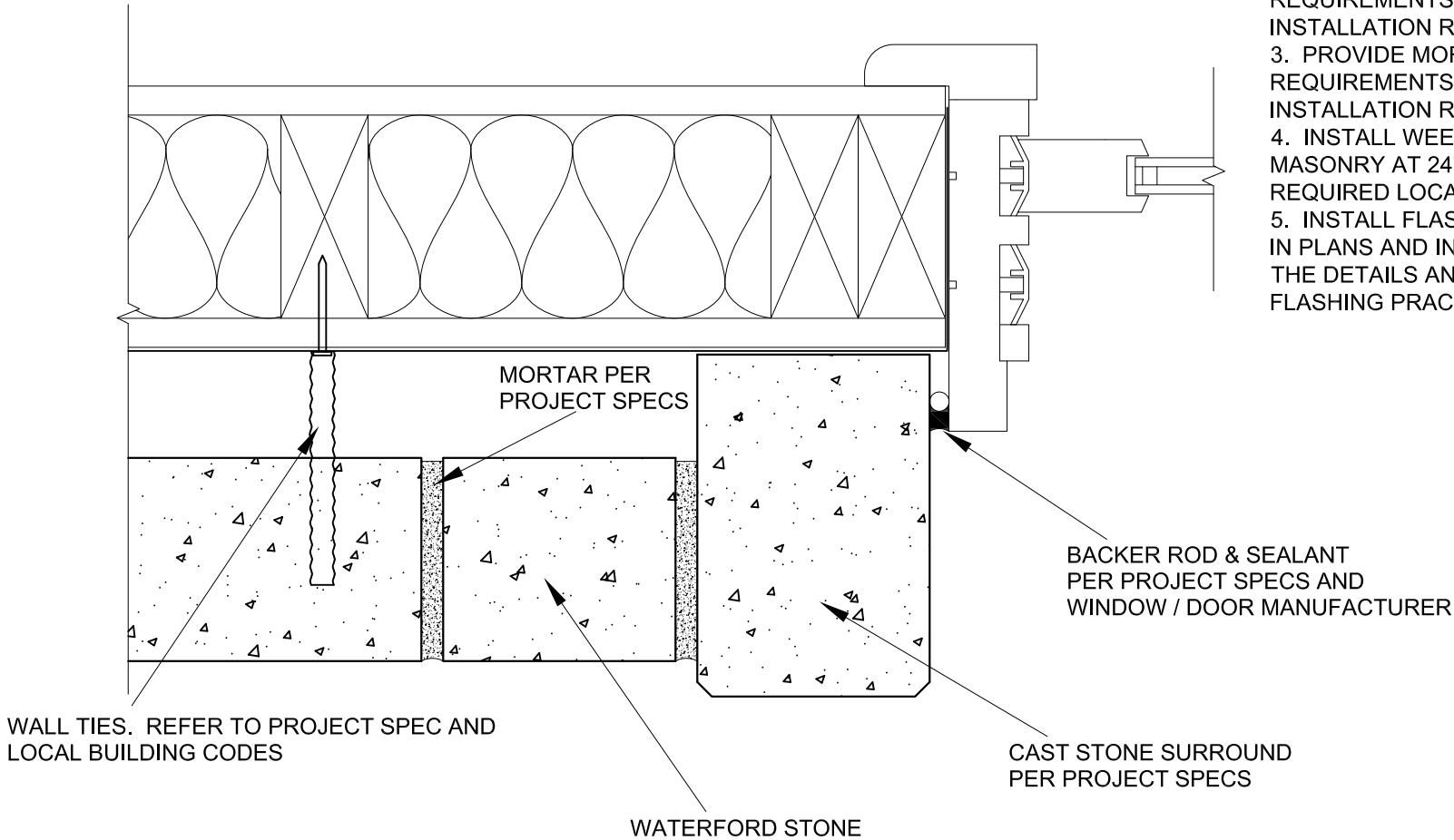




PROPRIETARY AND CONFIDENTIAL
 THE INFORMATION CONTAINED IN THIS DRAWING IS
 THE SOLE PROPERTY OF OLDCASTLE APG. ANY
 REPRODUCTION IN PART OR AS A WHOLE WITHOUT
 THE WRITTEN PERMISSION OF OLDCASTLE APG IS
 PROHIBITED

 <div>ECHELON™</div>	DRAWING TITLE:	WINDOW / DOOR JAMB DETAIL							
	DESCRIPTION	WATERFORD STONE TERMINATION							
	PRODUCT:	ARTISAN - WATERFORD STONE			0	9/29/2015	ORIGINAL ISSUE		JS -
	STRUCTURE SUBSTRATE:	VARIES PER PROJECT SPECS			REV	DATE	REVISION DESCRIPTION		BY CHK
					SCALE:			DRAWING NUMBER:	
					NOT TO SCALE			ARW - 4A	

- NOTES**
1. WEATHER RESISTIVE BARRIER, SHEATHING AND WALL SUBSTRATE PER PROJECT SPECS & LOCAL BUILDING CODE
 2. PROVIDE ANCHORS TO SUIT DESIGN REQUIREMENTS FOR MATERIAL AND INSTALLATION REQUIREMENTS.
 3. PROVIDE MORTAR TO SUIT DESIGN REQUIREMENTS FOR MATERIAL AND INSTALLATION REQUIREMENTS.
 4. INSTALL WEEP HOLES IN VENEER MASONRY AT 24" O.C. MAXIMUM AT ALL REQUIRED LOCATIONS.
 5. INSTALL FLASHING AT LOCATIONS SHOWN IN PLANS AND IN STRICT ACCORDANCE WITH THE DETAILS AND THE BEST MASONRY FLASHING PRACTICES

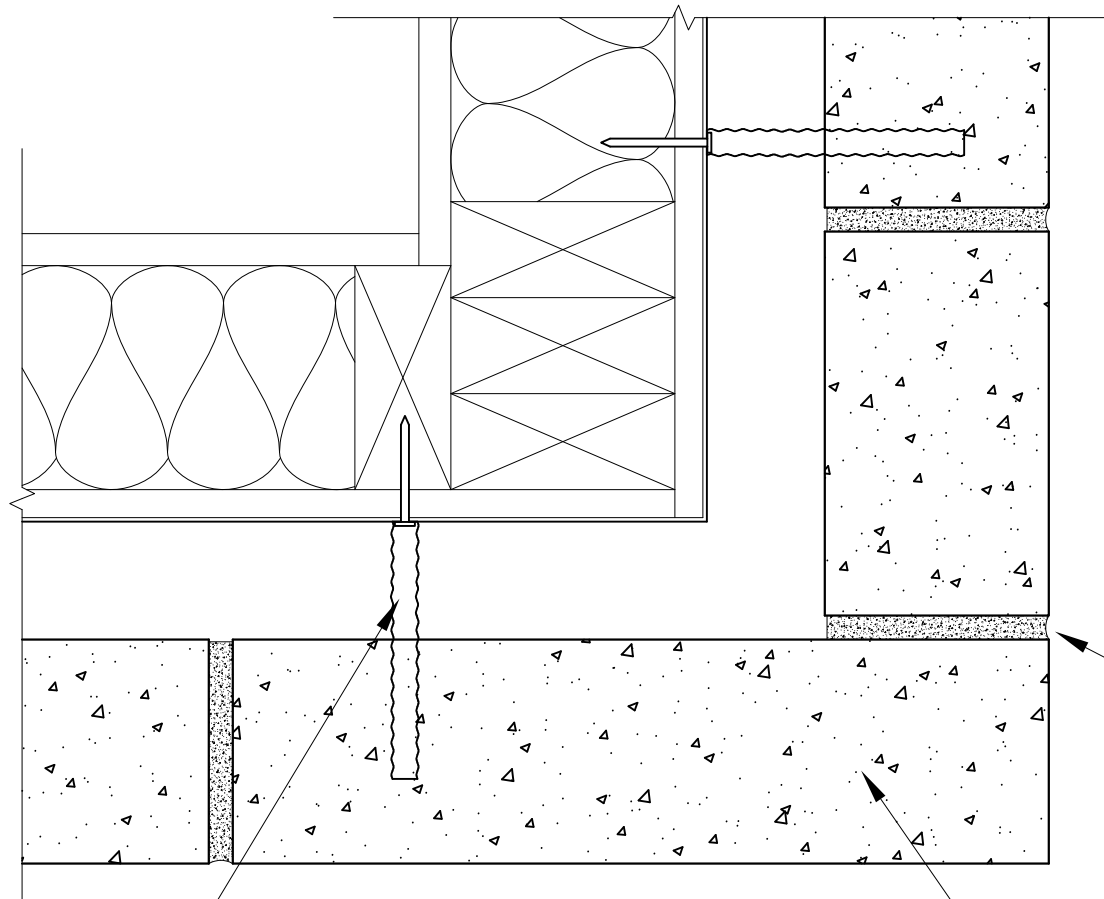


PROPRIETARY AND CONFIDENTIAL
THE INFORMATION CONTAINED IN THIS DRAWING IS
THE SOLE PROPERTY OF OLDCASTLE APG. ANY
REPRODUCTION IN PART OR AS A WHOLE WITHOUT
THE WRITTEN PERMISSION OF OLDCASTLE APG IS
PROHIBITED



ECHELON™

DRAWING TITLE:					
WINDOW / DOOR JAMB DETAIL					
DESCRIPTION:					
CAST SURROUND TERMINATION					
PRODUCT:		0	9/29/2015	ORIGINAL ISSUE	JS -
ARTISAN - WATERFORD STONE		REV	DATE	REVISION DESCRIPTION	BY CHK
STRUCTURE SUBSTRATE:		SCALE:		DRAWING NUMBER:	
VARIES PER PROJECT SPECS		NOT TO SCALE		ARW - 4B	



NOTES

1. WEATHER RESISTIVE BARRIER, SHEATHING AND WALL SUBSTRATE PER PROJECT SPECS & LOCAL BUILDING CODE
2. PROVIDE ANCHORS TO SUIT DESIGN REQUIREMENTS FOR MATERIAL AND INSTALLATION REQUIREMENTS.
3. PROVIDE MORTAR TO SUIT DESIGN REQUIREMENTS FOR MATERIAL AND INSTALLATION REQUIREMENTS.
4. INSTALL WEEP HOLES IN VENEER MASONRY AT 24" O.C. MAXIMUM AT ALL REQUIRED LOCATIONS.
5. INSTALL FLASHING AT LOCATIONS SHOWN IN PLANS AND IN STRICT ACCORDANCE WITH THE DETAILS AND THE BEST MASONRY FLASHING PRACTICES

MORTAR PER
PROJECT SPECS

WALL TIES. REFER TO PROJECT SPEC AND
LOCAL BUILDING CODES

WATERFORD STONE

Oldcastle Architectural

PROPRIETARY AND CONFIDENTIAL
THE INFORMATION CONTAINED IN THIS DRAWING IS
THE SOLE PROPERTY OF OLDCASTLE APG. ANY
REPRODUCTION IN PART OR AS A WHOLE WITHOUT
THE WRITTEN PERMISSION OF OLDCASTLE APG IS
PROHIBITED



ECHELON™

DRAWING TITLE:

CORNER DETAIL

DESCRIPTION:

CAST SURROUND W/ EXTENDED WINDOW JAMB

PRODUCT:

ARTISAN - WATERFORD STONE

STRUCTURE SUBSTRATE:

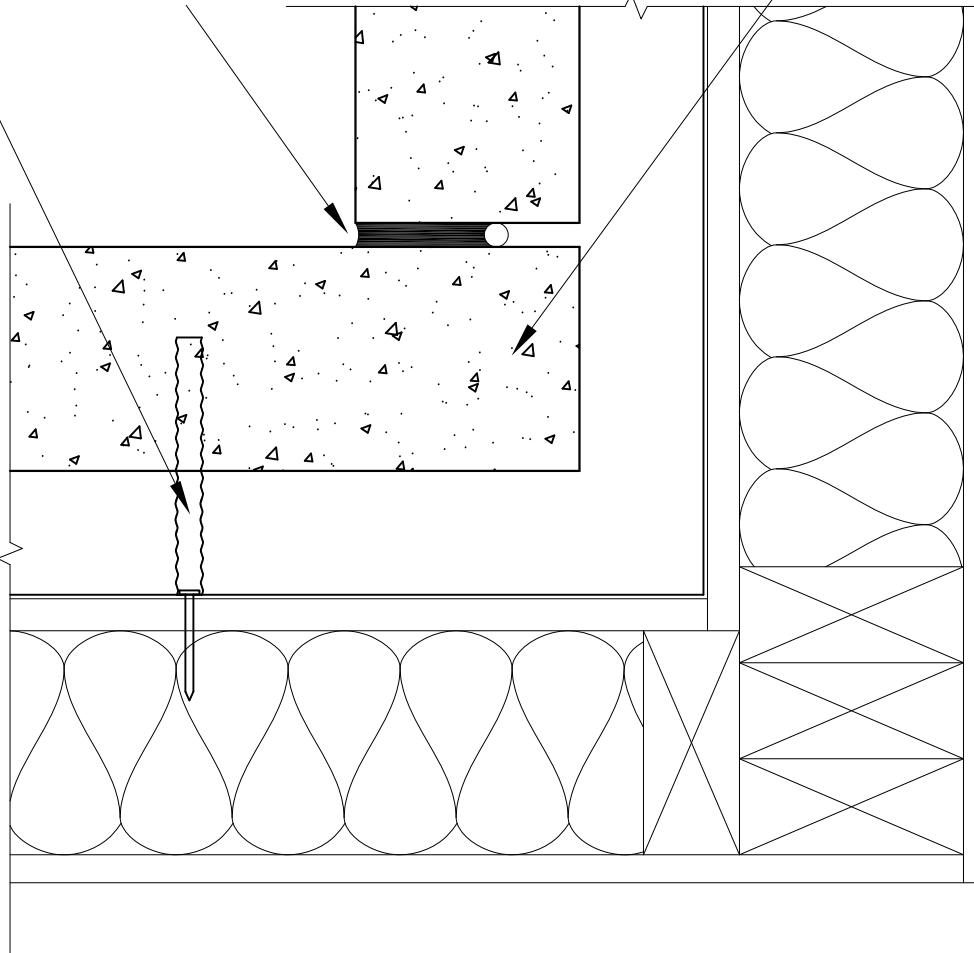
VARIES PER PROJECT SPECS

0	9/29/2015	ORIGINAL ISSUE		JS	-
REV	DATE	REVISION DESCRIPTION		BY	CHK
SCALE:		DRAWING NUMBER:			
NOT TO SCALE		ARW - 5A			

WALL TIES. REFER TO PROJECT SPECS AND
LOCAL BUILDING CODES

BACKER ROD & SEALANT
PER PROJECT SPECS AND
WINDOW / DOOR MANUFACTURER

WATERFORD STONE



NOTES

1. WEATHER RESISTIVE BARRIER, SHEATHING AND WALL SUBSTRATE PER PROJECT SPECS & LOCAL BUILDING CODE
2. PROVIDE ANCHORS TO SUIT DESIGN REQUIREMENTS FOR MATERIAL AND INSTALLATION REQUIREMENTS.
3. PROVIDE MORTAR TO SUIT DESIGN REQUIREMENTS FOR MATERIAL AND INSTALLATION REQUIREMENTS.
4. INSTALL WEEP HOLES IN VENEER MASONRY AT 24" O.C. MAXIMUM AT ALL REQUIRED LOCATIONS.
5. INSTALL FLASHING AT LOCATIONS SHOWN IN PLANS AND IN STRICT ACCORDANCE WITH THE DETAILS AND THE BEST MASONRY FLASHING PRACTICES

 **Oldcastle** Architectural

PROPRIETARY AND CONFIDENTIAL
THE INFORMATION CONTAINED IN THIS DRAWING IS
THE SOLE PROPERTY OF OLDCASTLE APG. ANY
REPRODUCTION IN PART OR AS A WHOLE WITHOUT
THE WRITTEN PERMISSION OF OLDCASTLE APG IS
PROHIBITED



ECHELONTM

DRAWING TITLE:

CORNER DETAIL

DESCRIPTION

INSIDE CORNER

PRODUCT:

ARTISAN - WATERFORD STONE

STRUCTURE SUBSTRATE:

VARIES PER PROJECT SPECS

0	9/29/2015	ORIGINAL ISSUE		JS	-
REV	DATE	REVISION DESCRIPTION		BY	CHK
SCALE:		DRAWING NUMBER:			
NOT TO SCALE		ARW - 5B			