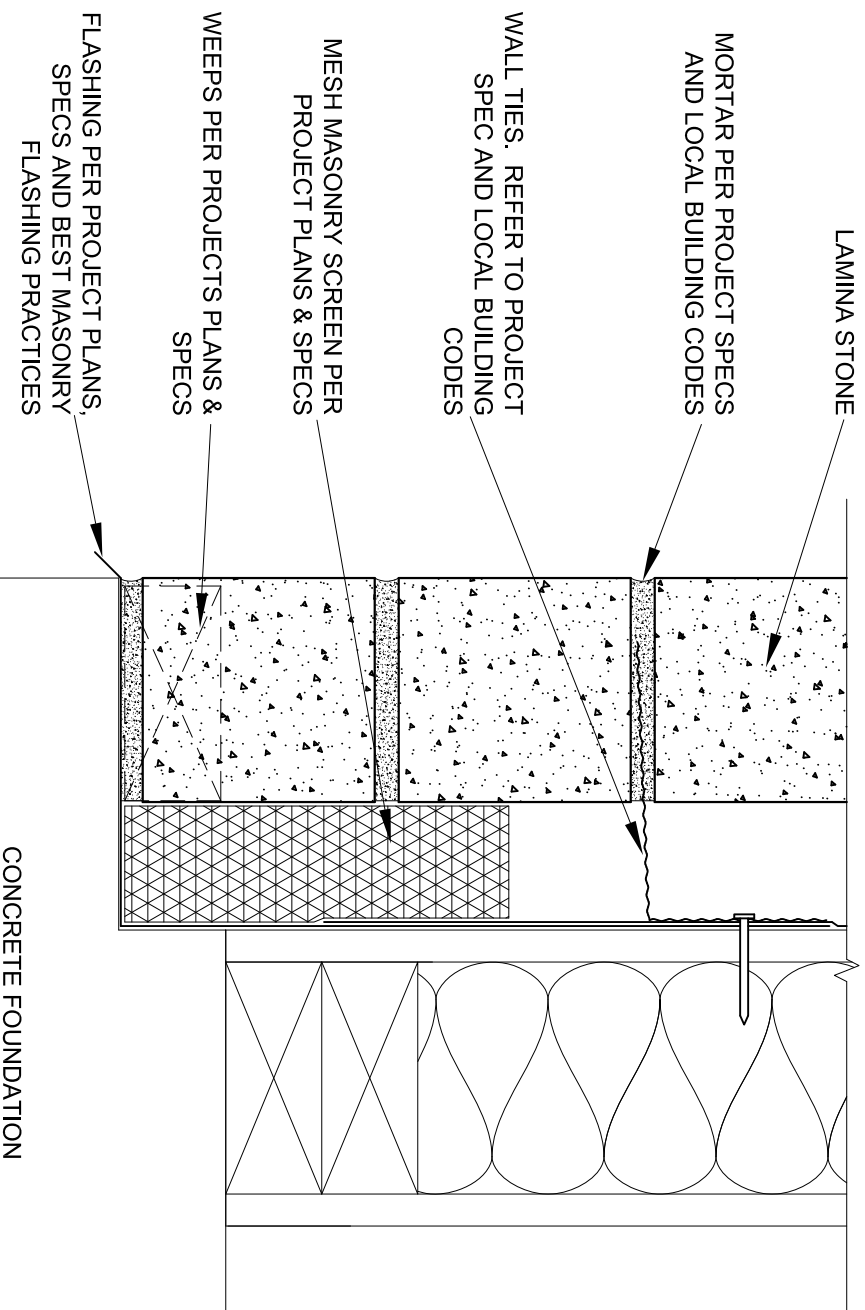


- NOTES**
1. WEATHER RESISTIVE BARRIER, SHEATHING AND WALL SUBSTRATE PER PROJECT SPECS & LOCAL BUILDING CODE
  2. PROVIDE ANCHORS TO SUIT DESIGN REQUIREMENTS FOR MATERIAL AND INSTALLATION REQUIREMENTS.
  3. PROVIDE MORTAR TO SUIT DESIGN REQUIREMENTS FOR MATERIAL AND INSTALLATION REQUIREMENTS.
  4. INSTALL WEEP HOLES IN VENEER MASONRY AT 24" O.C. MAXIMUM AT ALL REQUIRED LOCATIONS.
  5. INSTALL FLASHING AT LOCATIONS SHOWN IN PLANS AND IN STRICT ACCORDANCE WITH THE DETAILS AND THE BEST MASONRY FLASHING PRACTICES





**Oldcastle** Architectural

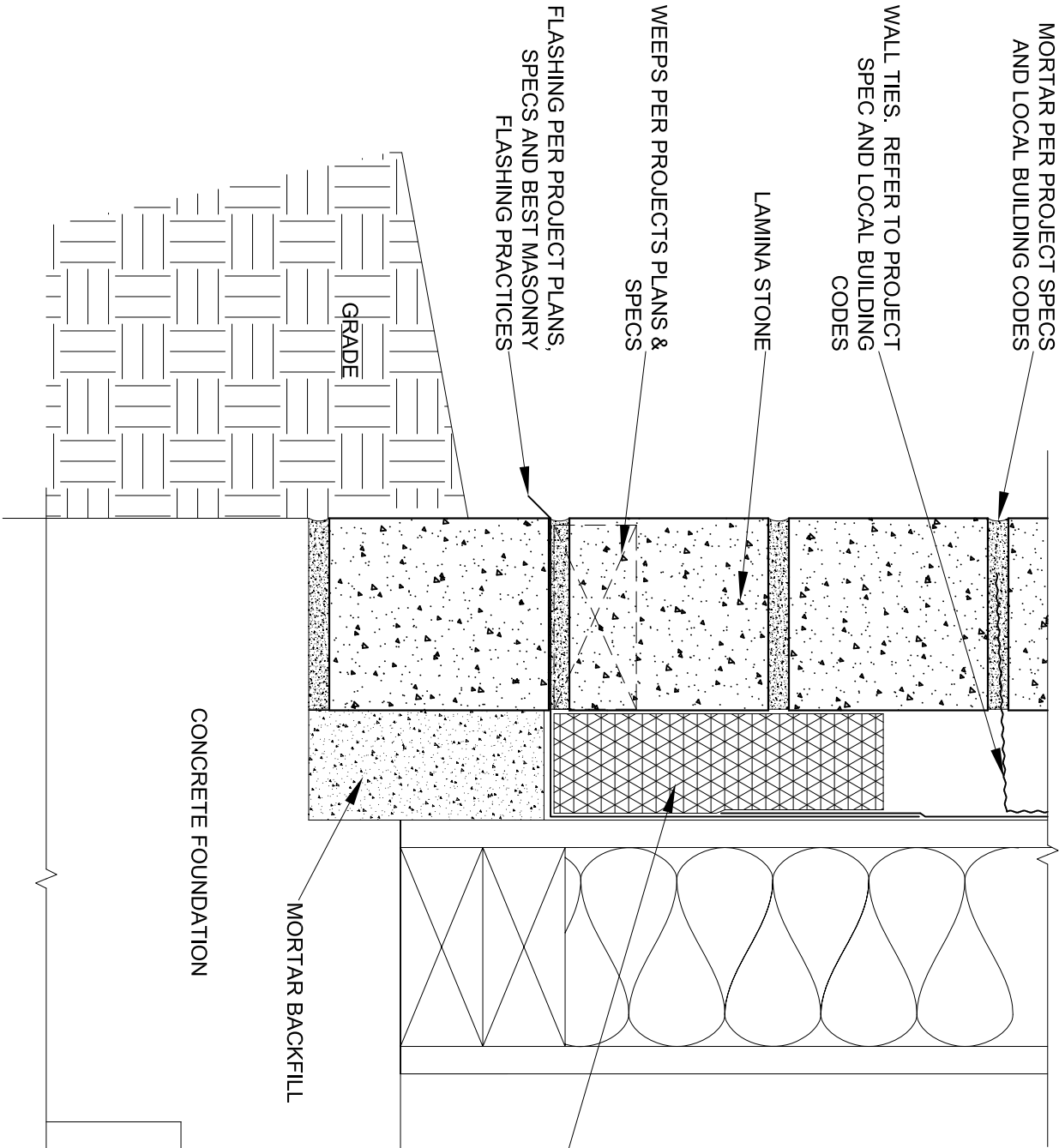
PROPRIETARY AND CONFIDENTIAL  
 THE INFORMATION CONTAINED IN THIS DRAWING IS  
 THE SOLE PROPERTY OF OLDCASTLE APG. ANY  
 REPRODUCTION IN PART OR AS A WHOLE WITHOUT  
 THE WRITTEN PERMISSION OF OLDCASTLE APG IS  
 PROHIBITED

DRAWING TITLE:									
FOUNDATION DETAIL									
DESCRIPTION									
BRICK LEDGE - ABOVE GRADE									
PRODUCT:				0	9/29/2015		ORIGINAL ISSUE	JS	-
ARTISAN - LAMINA STONE				REV	DATE		REVISION DESCRIPTION	BY	CHK
STRUCTURE SUBSTRATE:				SCALE:		DRAWING NUMBER:			
VARIES PER PROJECT SPECS				NOT TO SCALE		ARL- 1A			



**NOTES**

1. WEATHER RESISTIVE BARRIER, SHEATHING AND WALL SUBSTRATE PER PROJECT SPECS & LOCAL BUILDING CODE
2. PROVIDE ANCHORS TO SUIT DESIGN REQUIREMENTS FOR MATERIAL AND INSTALLATION REQUIREMENTS.
3. PROVIDE MORTAR TO SUIT DESIGN REQUIREMENTS FOR MATERIAL AND INSTALLATION REQUIREMENTS.
4. INSTALL WEEP HOLES IN VENEER MASONRY AT 24" O.C. MAXIMUM AT ALL REQUIRED LOCATIONS.
5. INSTALL FLASHING AT LOCATIONS SHOWN IN PLANS AND IN STRICT ACCORDANCE WITH THE DETAILS AND THE BEST MASONRY FLASHING PRACTICES

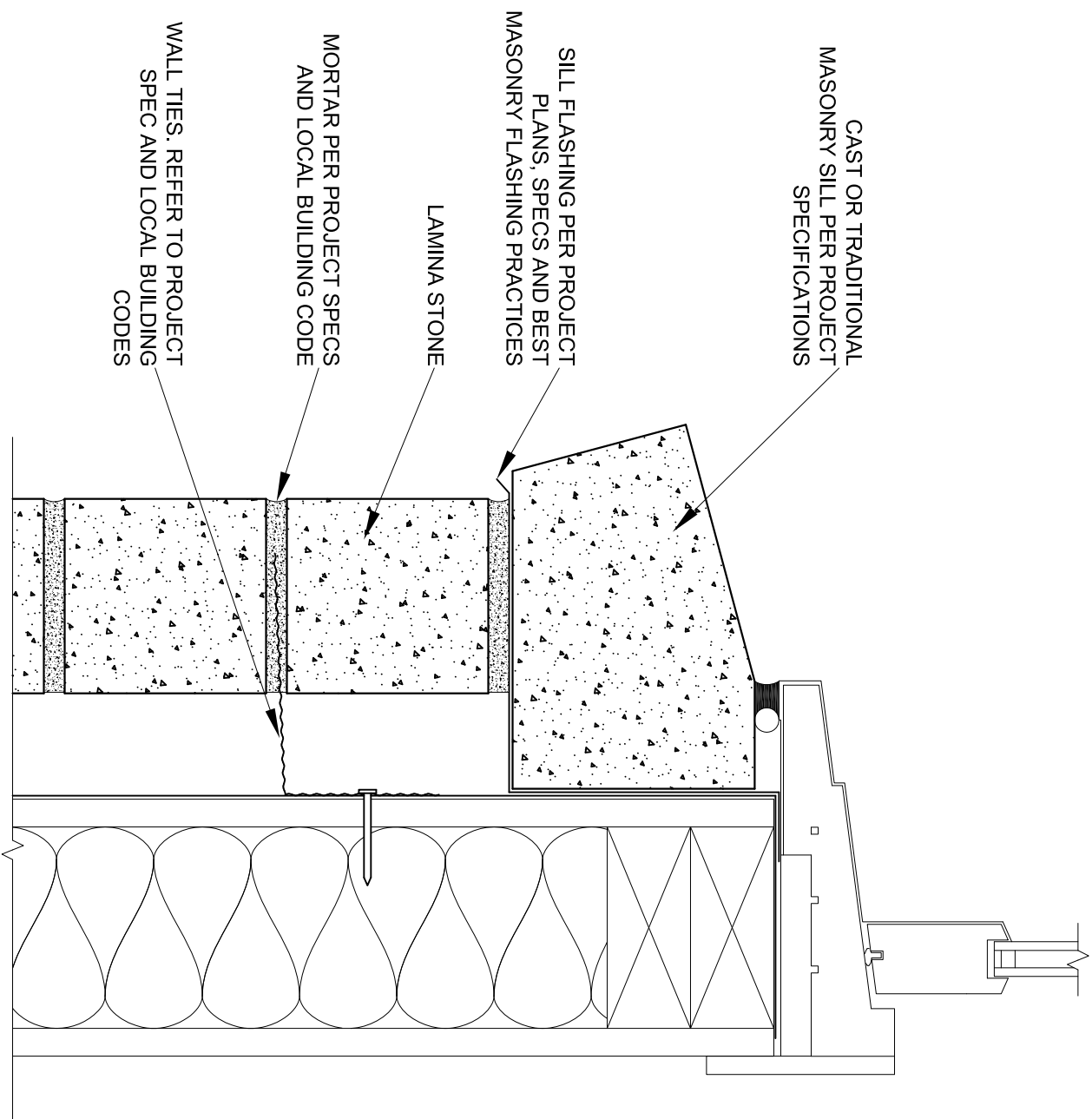


**Oldcastle** Architectural

PROPRIETARY AND CONFIDENTIAL  
THE INFORMATION CONTAINED IN THIS DRAWING IS  
THE SOLE PROPERTY OF OLDCASTLE APG. ANY  
REPRODUCTION IN PART OR AS A WHOLE WITHOUT  
THE WRITTEN PERMISSION OF OLDCASTLE APG IS  
PROHIBITED

DRAWING TITLE:		FOUNDATION DETAIL			
DESCRIPTION		BRICK LEDGE - BELOW GRADE			
PRODUCT:		ARTISAN - LAMINA STONE			
STRUCTURE SUBSTRATE:		VARIES PER PROJECT SPECS			
SCALE:		NOT TO SCALE			
DRAWING NUMBER:		ARL - 1B			
REV		DATE			
0		9/29/2015			
ORIGINAL ISSUE					
JS					
REVISION DESCRIPTION					
BY					
CHK					





**NOTES**

1. WEATHER RESISTIVE BARRIER, SHEATHING AND WALL SUBSTRATE PER PROJECT SPECS & LOCAL BUILDING CODE
2. PROVIDE ANCHORS TO SUIT DESIGN REQUIREMENTS FOR MATERIAL AND INSTALLATION REQUIREMENTS.
3. PROVIDE MORTAR TO SUIT DESIGN REQUIREMENTS FOR MATERIAL AND INSTALLATION REQUIREMENTS.
4. INSTALL WEEP HOLES IN VENEER MASONRY AT 24" O.C. MAXIMUM AT ALL REQUIRED LOCATIONS.
5. INSTALL FLASHING AT LOCATIONS SHOWN IN PLANS AND IN STRICT ACCORDANCE WITH THE DETAILS AND THE BEST MASONRY FLASHING PRACTICES

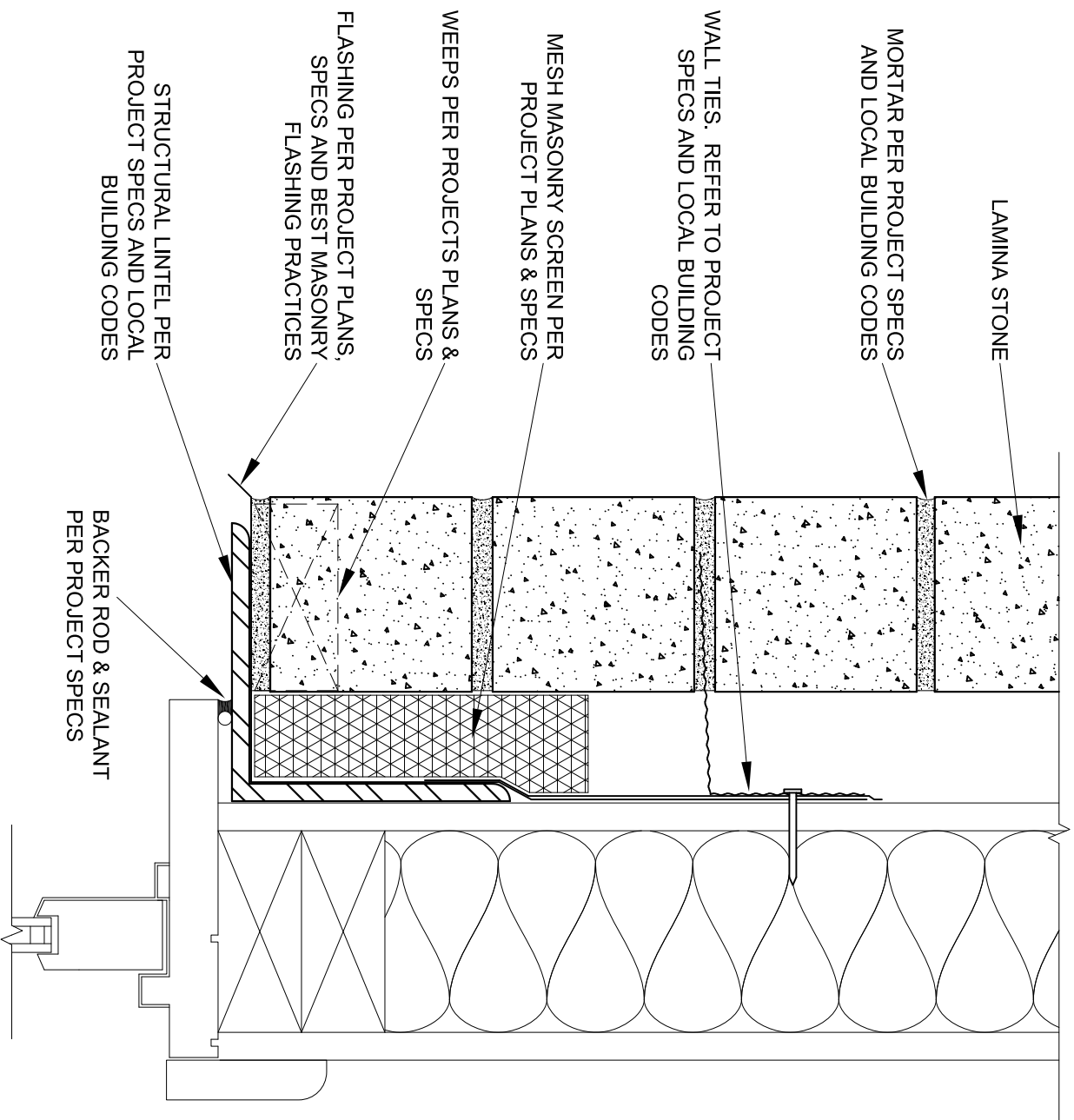

**Oldcastle Architectural**

PROPRIETARY AND CONFIDENTIAL  
 THE INFORMATION CONTAINED IN THIS DRAWING IS  
 THE SOLE PROPERTY OF OLDCASTLE APG. ANY  
 REPRODUCTION IN PART OR AS A WHOLE WITHOUT  
 THE WRITTEN PERMISSION OF OLDCASTLE APG IS  
 PROHIBITED

DRAWING TITLE:			
WINDOW SILL DETAIL			
DESCRIPTION			
CAST / TRADITIONAL SILL			
PRODUCT:			
ARTISAN - LAMINA STONE			
STRUCTURE SUBSTRATE:			
VARIES PER PROJECT SPECS			
SCALE:	NOT TO SCALE		
DRAWING NUMBER:	ARL - 2A		



- NOTES**
1. WEATHER RESISTIVE BARRIER, SHEATHING AND WALL SUBSTRATE PER PROJECT SPECS & LOCAL BUILDING CODE
  2. PROVIDE ANCHORS TO SUIT DESIGN REQUIREMENTS FOR MATERIAL AND INSTALLATION REQUIREMENTS.
  3. PROVIDE MORTAR TO SUIT DESIGN REQUIREMENTS FOR MATERIAL AND INSTALLATION REQUIREMENTS.
  4. INSTALL WEEP HOLES IN VENEER MASONRY AT 24" O.C. MAXIMUM AT ALL REQUIRED LOCATIONS.
  5. INSTALL FLASHING AT LOCATIONS SHOWN IN PLANS AND IN STRICT ACCORDANCE WITH THE DETAILS AND THE BEST MASONRY FLASHING PRACTICES



**Oldcastle** Architectural

PROPRIETARY AND CONFIDENTIAL  
THE INFORMATION CONTAINED IN THIS DRAWING IS THE SOLE PROPERTY OF OLDCASTLE APG. ANY REPRODUCTION IN PART OR AS A WHOLE WITHOUT THE WRITTEN PERMISSION OF OLDCASTLE APG IS PROHIBITED

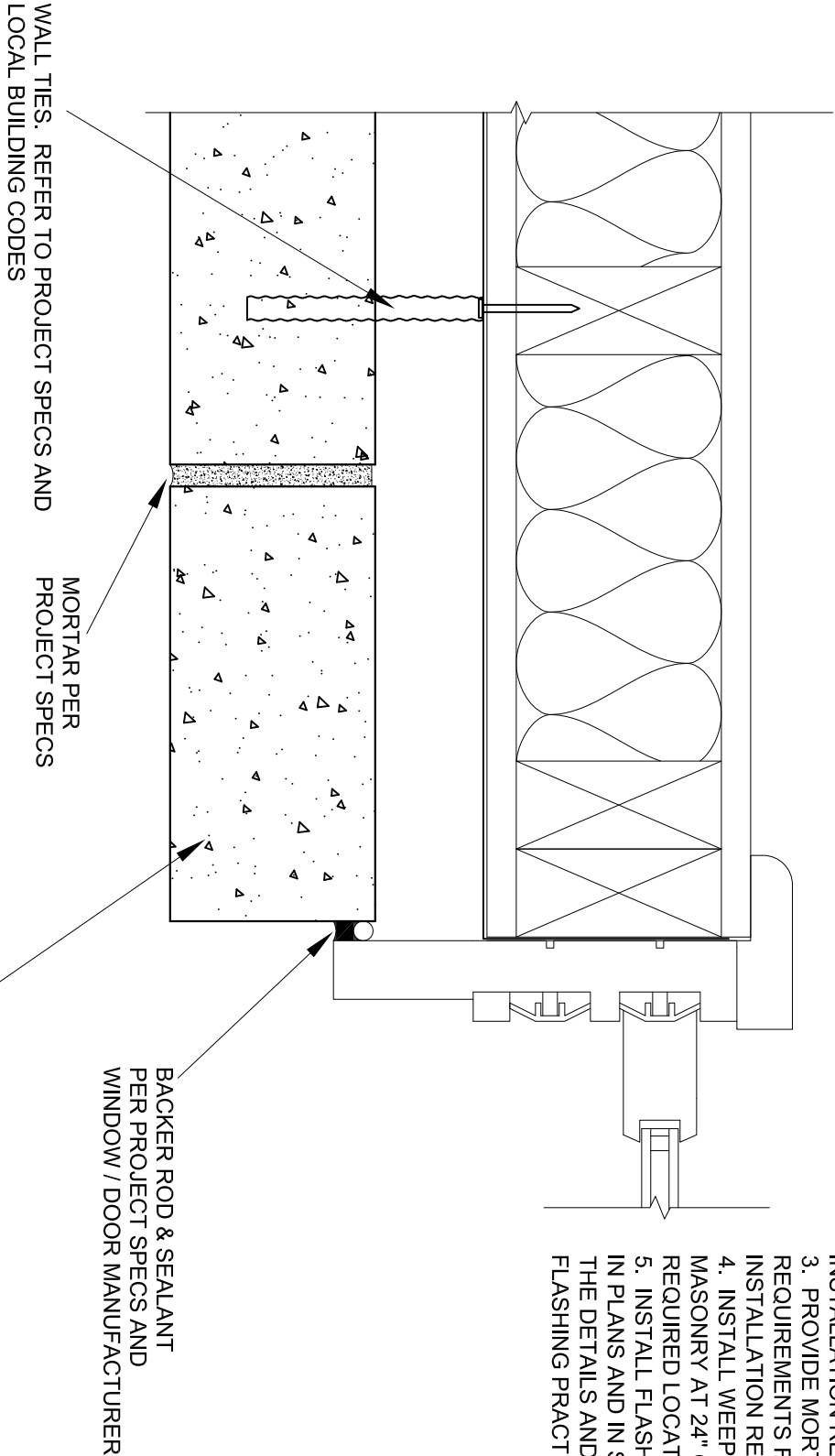


**ECHELON**<sup>TM</sup>

DRAWING TITLE: WINDOW / DOOR HEAD DETAIL								
DESCRIPTION								
---								
PRODUCT: ARTISAN - LAMINA STONE			0	9/29/2015	ORIGINAL ISSUE			JS
STRUCTURE SUBSTRATE: VARIES PER PROJECT SPECS			REV	DATE	REVISION DESCRIPTION			BY
SCALE: NOT TO SCALE			DRAWING NUMBER: ARL - 3A					

**NOTES**

1. WEATHER RESISTIVE BARRIER, SHEATHING AND WALL SUBSTRATE PER PROJECT SPECS & LOCAL BUILDING CODE
2. PROVIDE ANCHORS TO SUIT DESIGN REQUIREMENTS FOR MATERIAL AND INSTALLATION REQUIREMENTS.
3. PROVIDE MORTAR TO SUIT DESIGN REQUIREMENTS FOR MATERIAL AND INSTALLATION REQUIREMENTS.
4. INSTALL WEEP HOLES IN VENEER MASONRY AT 24" O.C. MAXIMUM AT ALL REQUIRED LOCATIONS.
5. INSTALL FLASHING AT LOCATIONS SHOWN IN PLANS AND IN STRICT ACCORDANCE WITH THE DETAILS AND THE BEST MASONRY FLASHING PRACTICES



**Oldcastle** Architectural

PROPRIETARY AND CONFIDENTIAL.  
THE INFORMATION CONTAINED IN THIS DRAWING IS  
THE SOLE PROPERTY OF OLDCASTLE APG. ANY  
REPRODUCTION IN PART OR AS A WHOLE WITHOUT  
THE WRITTEN PERMISSION OF OLDCASTLE APG IS  
PROHIBITED

DRAWING TITLE:					
WINDOW / DOOR JAMB DETAIL					
DESCRIPTION					
WATERFORD STONE TERMINATION					
PRODUCT:		0	9/29/2015	ORIGINAL ISSUE	JS
ARTISAN - LAMINA STONE		REV	DATE	REVISION DESCRIPTION	BY
STRUCTURE SUBSTRATE:					CHK
VARIES PER PROJECT SPECS		SCALE:	NOT TO SCALE		
				DRAWING NUMBER:	ARL - 4A



1. WEATHER RESISTIVE BARRIER, SHEATHING AND WALL SUBSTRATE PER PROJECT SPECS & LOCAL BUILDING CODE
2. PROVIDE ANCHORS TO SUIT DESIGN REQUIREMENTS FOR MATERIAL AND INSTALLATION REQUIREMENTS.
3. PROVIDE MORTAR TO SUIT DESIGN REQUIREMENTS FOR MATERIAL AND INSTALLATION REQUIREMENTS.
4. INSTALL WEEP HOLES IN VENEER MASONRY AT 24" O.C. MAXIMUM AT ALL REQUIRED LOCATIONS.
5. INSTALL FLASHING AT LOCATIONS SHOWN IN PLANS AND IN STRICT ACCORDANCE WITH THE DETAILS AND THE BEST MASONRY FLASHING PRACTICES



PROPRIETARY AND CONFIDENTIAL  
THE INFORMATION CONTAINED IN THIS DRAWING IS  
THE SOLE PROPERTY OF OLDCASTLE APG. ANY  
REPRODUCTION IN PART OR AS A WHOLE WITHOUT  
THE WRITTEN PERMISSION OF OLDCASTLE APG IS  
PROHIBITED



**ECHELON™**

1. WEATHER RESISTIVE BARRIER, SHEATHING AND WALL SUBSTRATE PER PROJECT SPECS & LOCAL BUILDING CODE
2. PROVIDE ANCHORS TO SUIT DESIGN REQUIREMENTS FOR MATERIAL AND INSTALLATION REQUIREMENTS.
3. PROVIDE MORTAR TO SUIT DESIGN REQUIREMENTS FOR MATERIAL AND INSTALLATION REQUIREMENTS.
4. INSTALL WEEP HOLES IN VENEER MASONRY AT 24" O.C. MAXIMUM AT ALL REQUIRED LOCATIONS.
5. INSTALL FLASHING AT LOCATIONS SHOWN IN PLANS AND IN STRICT ACCORDANCE WITH THE DETAILS AND THE BEST MASONRY FLASHING PRACTICES



WATERFORD STONE



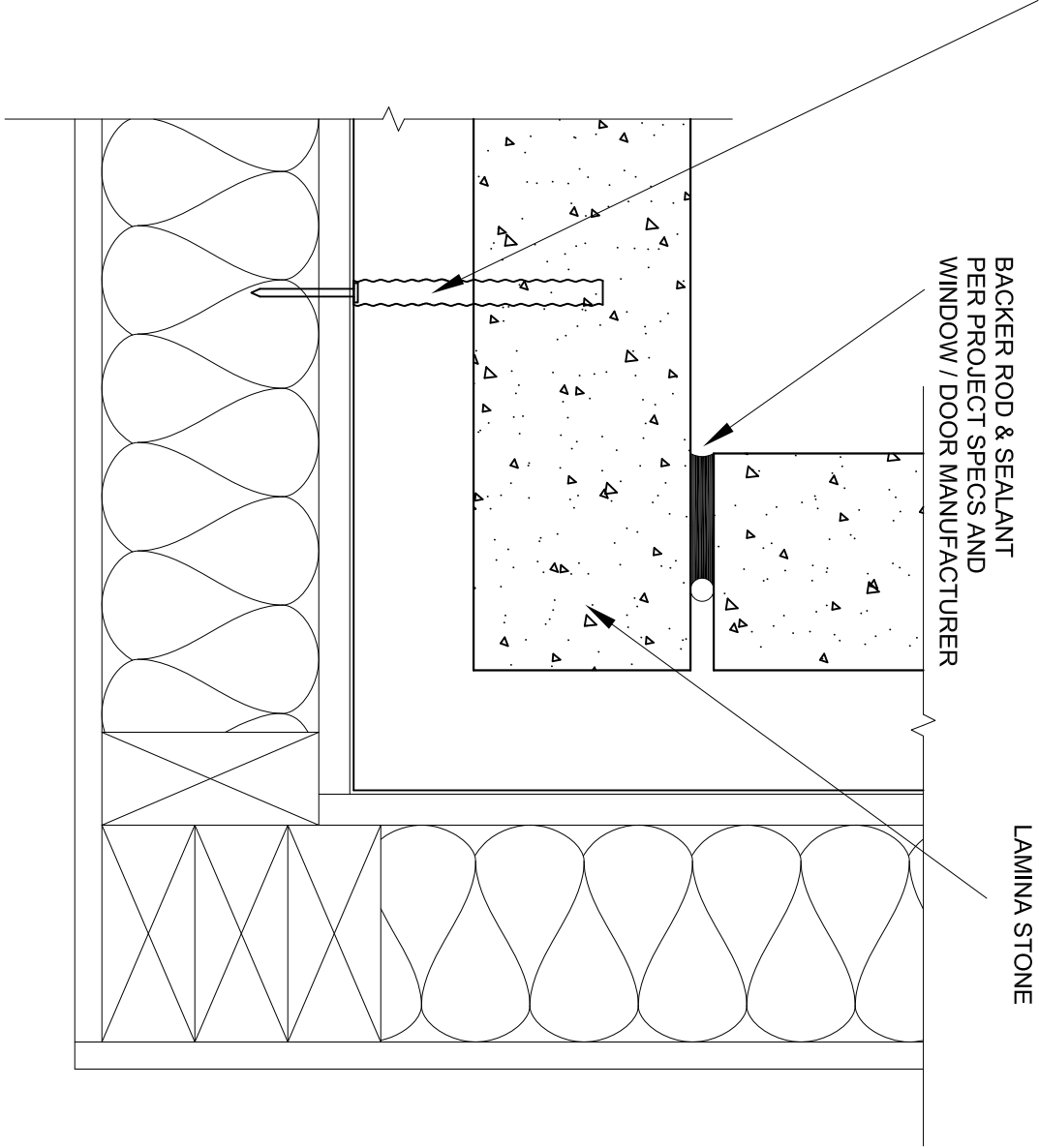
ECHELON™

[illegible]

WALL TIES. REFER TO PROJECT SPEC AND  
LOCAL BUILDING CODE

BACKER ROD & SEALANT  
PER PROJECT SPECS AND  
WINDOW / DOOR MANUFACTURER

LAMINA STONE



**NOTES**

1. WEATHER RESISTIVE BARRIER, SHEATHING AND WALL SUBSTRATE PER PROJECT SPECS & LOCAL BUILDING CODE
2. PROVIDE ANCHORS TO SUIT DESIGN REQUIREMENTS FOR MATERIAL AND INSTALLATION REQUIREMENTS.
3. PROVIDE MORTAR TO SUIT DESIGN REQUIREMENTS FOR MATERIAL AND INSTALLATION REQUIREMENTS.
4. INSTALL WEEP HOLES IN VENEER MASONRY AT 24" O.C. MAXIMUM AT ALL REQUIRED LOCATIONS.
5. INSTALL FLASHING AT LOCATIONS SHOWN IN PLANS AND IN STRICT ACCORDANCE WITH THE DETAILS AND THE BEST MASONRY FLASHING PRACTICES

**Oldcastle** Architectural

PROPRIETARY AND CONFIDENTIAL.  
THE INFORMATION CONTAINED IN THIS DRAWING IS  
THE SOLE PROPERTY OF OLDCASTLE APG. ANY  
REPRODUCTION IN PART OR AS A WHOLE WITHOUT  
THE WRITTEN PERMISSION OF OLDCASTLE APG IS  
PROHIBITED

DRAWING TITLE:

CORNER DETAIL

DESCRIPTION

INSIDE CORNER

PRODUCT:

ARTISAN - LAMINA STONE

STRUCTURE SUBSTRATE:

VARIES PER PROJECT SPECS




0	9/29/2015		ORIGINAL ISSUE	JS	-
REV	DATE		REVISION DESCRIPTION	BY	CHK


SCALE:					
NOT TO SCALE					


DRAWING NUMBER:  
ARL - 5B



ECHELON™