

# InsulTech™

INSULATED FULL AND HALF-HIGH  
CONCRETE MASONRY SYSTEM



**ECHELON™**

Quality masonry products from Oldcastle®



FEATURING NEOPOR®  
HIGH PERFORMANCE EPS

InsulTech™ ICMS is a complete thermally broken insulated masonry system which includes a full complement of masonry units and is produced by Oldcastle®. InsulTech offers high thermal efficiency in an innovative design combining a pre-assembled structural masonry unit, molded High Performance Neopor® EPS insulation insert and thin veneer face. InsulTech provides design flexibility, installation efficiency and is available in both standard finishes as well as Trenwyth® colors and textures.



Upgrade the performance of your project with acoustical comfort, energy efficiency & moisture management with this complete system.

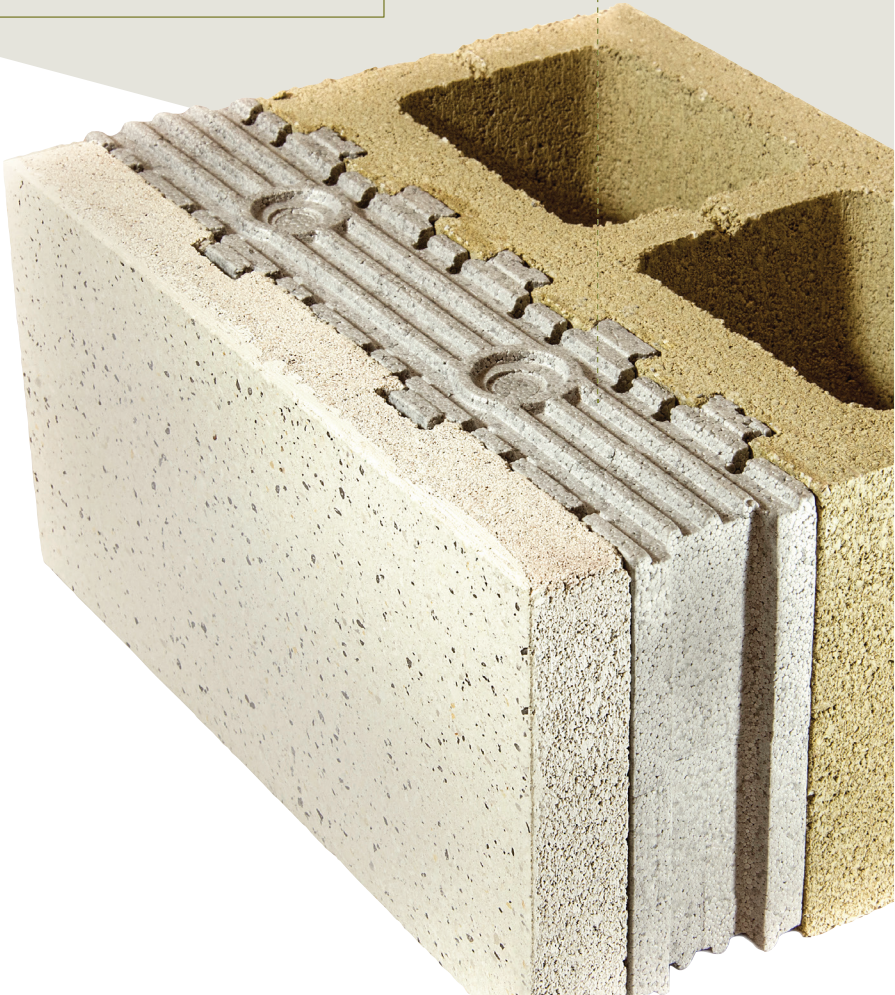


IAPMO ER#420

# Achieve more with a single block

InsulTech™ is a pre-assembled structural masonry unit, molded EPS insulation insert and thin veneer face all-in-one. This complete assembly not only improves overall energy efficiency, but reduces installation time—since one block does it all. It's available in both standard finishes, as well as Trenwyth architectural block colors and textures.

InsulTech combines a CMU, Neopor® EPS foam insert, and thin veneer to provide a **16.2 R-Value at 75°F**



### ENERGY EFFICIENCY

InsulTech BASF Neopor® EPS molded insulation inserts combine with a CMU and thin veneer to provide a 16.2 R-Value at 75°F. InsulTech system meets 2012 & 2015 IECC Energy codes from Zones 1 through 7.



### AESTHETICS

A single block provides color and texture for both interior and exterior surfaces.



### MOISTURE MANAGEMENT

Molded drainage channels within the EPS inserts, combined with compliant closed cell gasket material with drainage perforations, provide continuous insulation, air tightness and superior moisture management.



### ACOUSTICS

Combined insulation and CMU provide increased acoustical comfort.

**AVAILABLE FINISHES:**

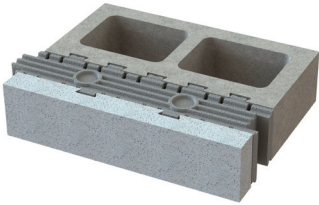
- > All Trenwyth® Masonry Block lines
- > Select Architectural CMUs

Visit [EchelonMasonry.com](http://EchelonMasonry.com) for more information

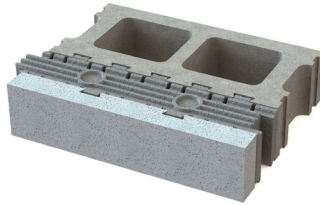
## InsulTech™ ICMS Block Units

Consists of a pre-assembled structural masonry unit, molded EPS insulation insert and thin veneer face

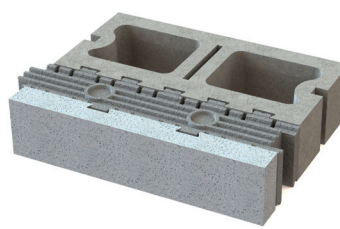
**PBE Stretcher Unit  
Half High**



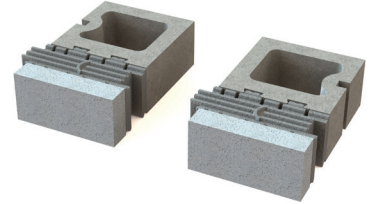
**OEBE Stretcher Unit  
Half High**



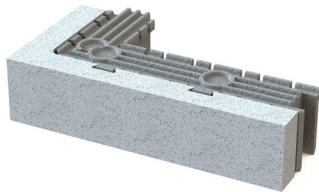
**Double Sash Unit  
Half High**



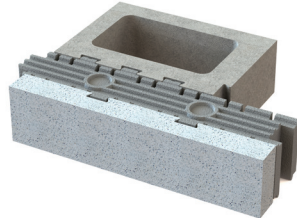
**Half Sash Unit Left & Right  
Half High**



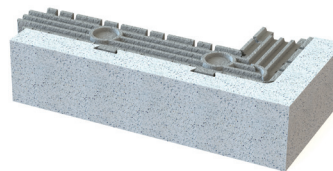
**Left Hand L Corner Face  
with insert for bond beam  
and veneering  
Half High**



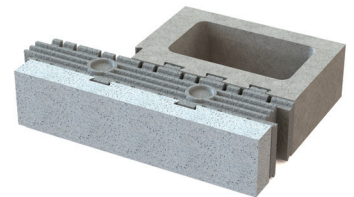
**Left Hand Corner  
Continuation Unit  
Half High**



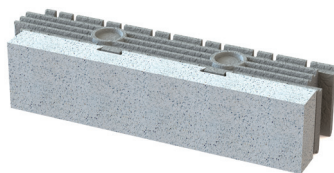
**Right Hand L Corner Face  
with insert for bond beam  
and veneering  
Half High**



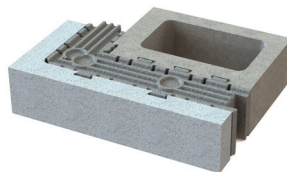
**Right Hand Corner  
Continuation Unit  
Half High**



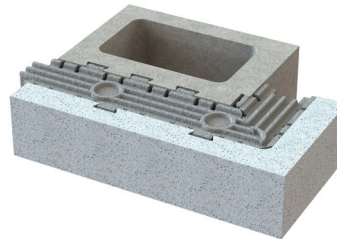
**16 in Face with insert for  
bond beam and veneering  
Half High**



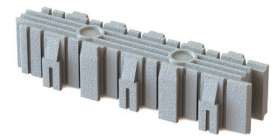
**Left Hand L-Corner Unit  
Half High**



**Right Hand L-Corner Unit  
Half High**



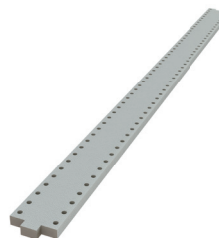
**InsulTech Insulation Insert  
Half High**



**Bond Beam CMU  
Half High**



**Horizontal Gasket**



## Features & Benefits

- Complete insulated concrete masonry system with a full complement of masonry units
- Consists of a **pre-assembled structural masonry unit**, molded Neopor® EPS insulation insert and thin veneer face with finished sizes of 12 1/4"W x 4"H x 16"L Nom.
- Installed as a complete assembly to improve installation efficiency
- InsulTech molded insert uses BASF High Performance Neopor EPS molded insulation inserts, giving the assembled unit an effective R-value of 16.2 at 75° F.
- **Fully thermally broken** units and system
- Meets 2012 and 2015 IECC Energy codes from Zones 1 through 7
- Internal **stainless steel metal anchors** molded into the EPS inserts ensures safety connection to the back wall during windloading and Fire Integrity™ for fire safety
- Innovative design provides continuous insulation and air tightness formed by the EPS inserts in combination with compliant closed cell gasket material and production spray applied air barrier
- All InsulTech™ CMUs and Thin Veneer Faces are produced with RainBloc® Integral Water Repellant or other Oldcastle approved water repellant admixtures.
- Multitude of color and texture options for aesthetic needs

