



ECHELON®

Multi-Family & Residential Masonry Stone Veneer Products

OLDCASTLE® BUILDER SOLUTIONS

Streamline the build process and maximize efficiencies with Oldcastle Builder Solutions. Backed by the manufacturing expertise and nationwide support of Oldcastle APG, the OBS team is dedicated to delivering the products, service and support you need to build faster, more profitable multifamily and mixed-use developments.

WHY PARTNER WITH OLDCASTLE BUILDER SOLUTIONS?

- Superior product quality and availability, nationwide
- Expansive product selection across multiple categories
- End-to-end support from engineering to specification to install
- Dedicated reps and a single point of contact for ordering
- Warranty and value-added programs tailored to your goals

Learn more about Builder Solutions at OldcastleBuilder.com



ANCHOR™ DIAMOND ENGINEERING & LAND DEVELOPMENT

End-to-end site development, retaining wall and stormwater engineering support to help maximize land usage and meet strict sustainability goals. The expertise you need to bring your vision to life.



BELGARD® HARDSCAPES

The North American leader in hardscapes. Pavers, retaining walls and outdoor living elements designed to solve development challenges, boost property value and add the unique aesthetics to set your projects apart.



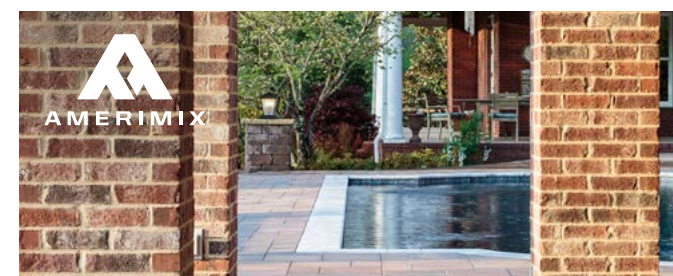
MOISTURESHIELD® COMPOSITE DECKING

Premium-grade decking engineered with Solid Core Technology to eliminate moisture absorption, insect damage, warping and rotting. Looks and works like wood, but lasts like nothing you've ever seen.



ECHELON™ MASONRY VENEERS

A full line of thin and fullbed masonry veneers from the North American leader in masonry. Deliver the timeless beauty of natural stone with the benefits of manufactured stone – high performance, lower weight and best-in class color and texture.



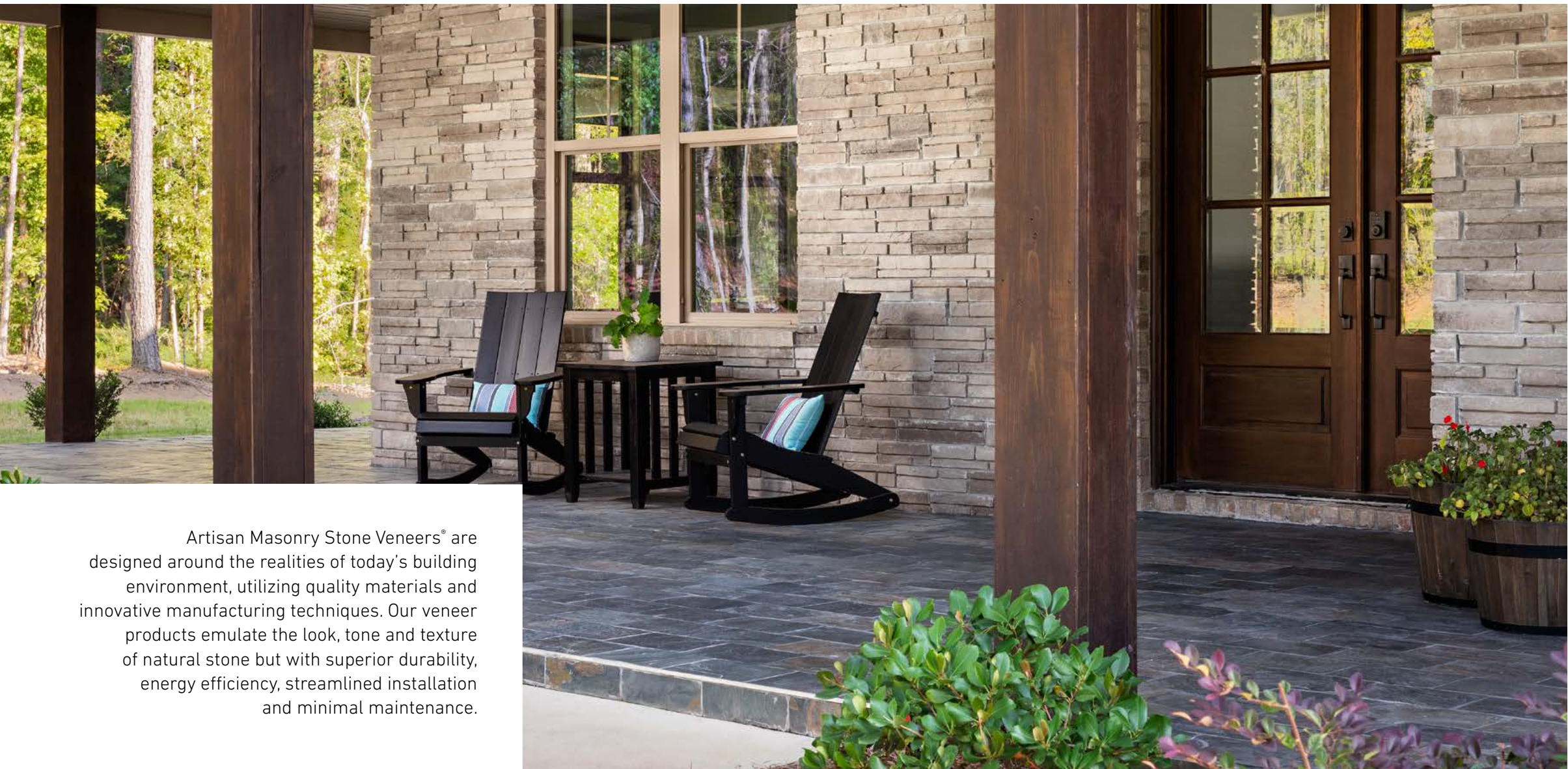
AMERIMIX® MORTARS & STUCCOS

Mason-grade pre-blended mortars, stuccos and grouts engineered for superior performance. Amerimix pre-blended mixes let you ditch the sand pile, making your builds cleaner, faster and more efficient.



BE.ON STONE® MECHANICALLY FASTENED STONE

The masonry look without the mason. Large-format 12" x 24" panels reduce installation time, while the integrated D.RAIN system ensures perfect alignment and moisture management without guesswork.



Artisan Masonry Stone Veneers® are designed around the realities of today's building environment, utilizing quality materials and innovative manufacturing techniques. Our veneer products emulate the look, tone and texture of natural stone but with superior durability, energy efficiency, streamlined installation and minimal maintenance.

CONTENTS

FULL BED VENEERS

- 6 Aria Slim™
- 8 Franklin™ Stone
- 10 Waterford™ Stone
- 12 Lamina™ Stone
- 14 Mondrian™ Stone
- 16 Cordova™ Stone

THIN VENEERS

- 18 Cordova™ Stone 1-Inch
- 20 Franklin™ Stone 1-Inch
- 22 Hillcrest™ Stone
- 24 Kensley™ Stone
- 26 Westpeak™ Stone
- 28 Mirage® Porcelain Veneer

SOLUTIONS

- 30 Amerimix® Preblended Mortars, Grouts & Stuccos



Aria Slim™

The long, clean lines of Aria Slim™ Stone deliver a distinctive linear aesthetic perfect for interior or exterior commercial applications. Available in a range of contrasting colors and textures, its sleek profile can easily be mixed with other materials to achieve a unique, contemporary look that sets your project apart.



Colors & Textures

					Smooth
					Ground Face
					Ground + Sealed
					Shot Blast
					Shot Blast + Sealed
Alabaster	Buff	Graphite	Limestone	Midnight	

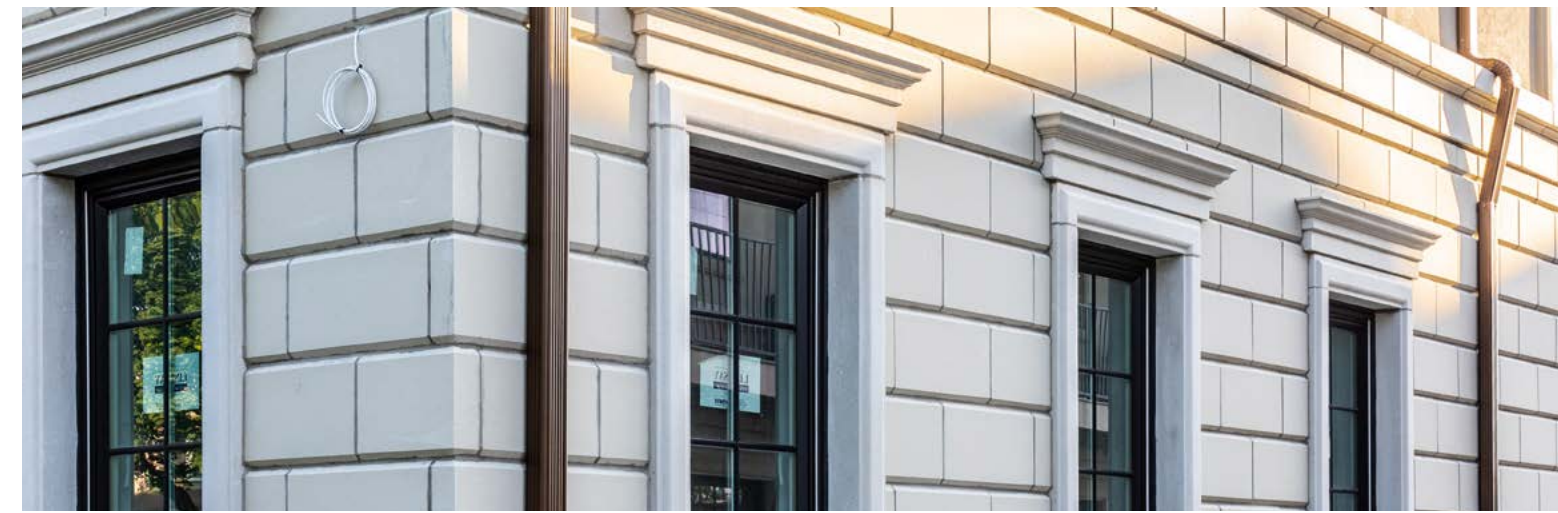
Dimensions

3 5/8" D x 3 5/8" H x 35 5/8" L



Franklin Stone™

Whether you prefer a smooth texture or a bold chiseled face, Franklin Stone is the ideal product for the look of cast stone with modern manufactured masonry advantages. A mixture of white Portland cement and combined with fine aggregates, Franklin Stone is a highly dense product with a texture similar to natural limestone. Unlike other masonry units, the aggregates do not show, giving Franklin Stone its consistent, natural finish.



Colors & Textures

					Smooth
					Rock Face
					Texture Face
					Chisel Face
Congress Tan	Liberty Gray	Monument White	Senate Sage	Colonial Buff	

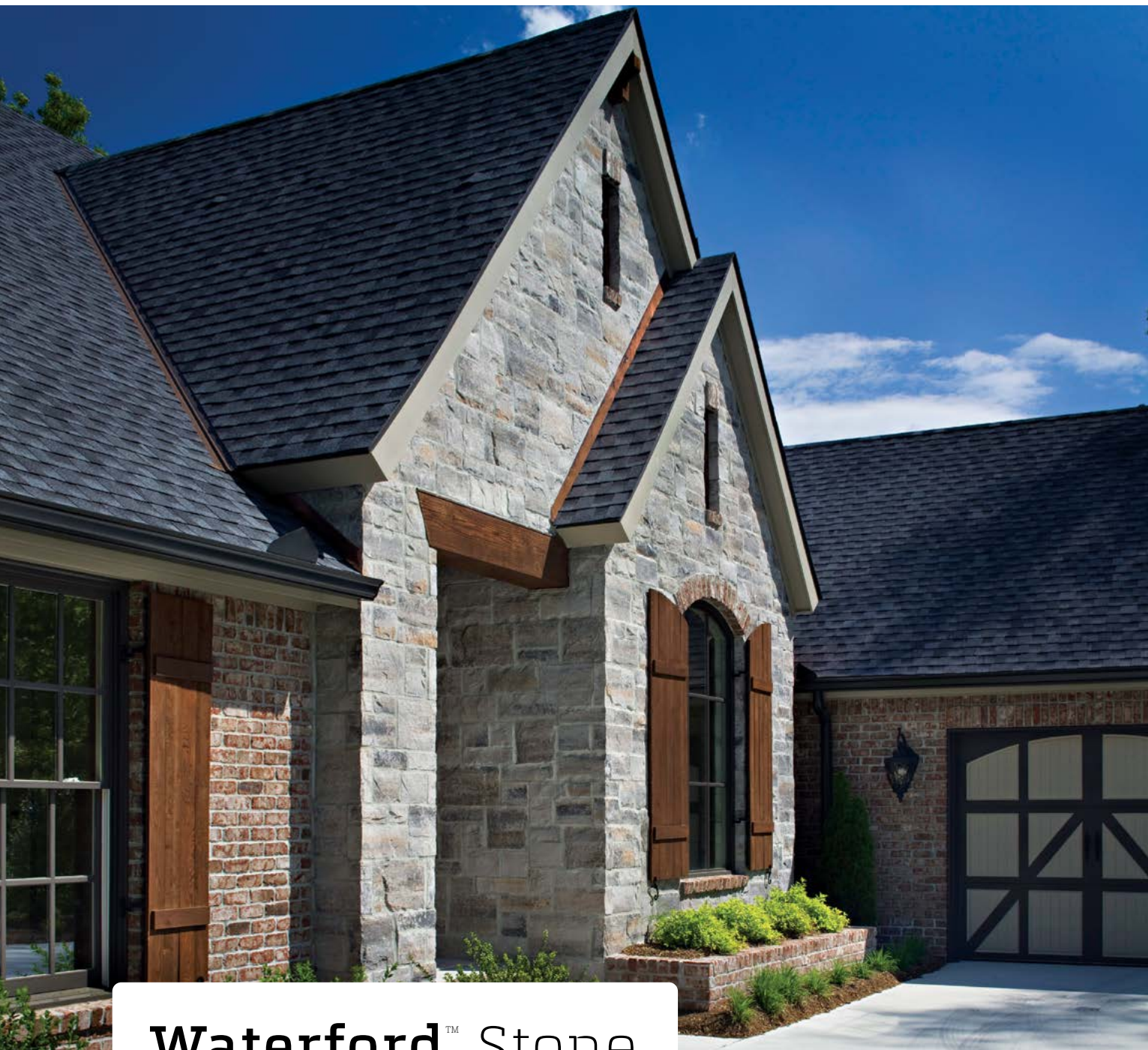
Dimensions*

Depth - 4"

Height - 4, 8, 12, 16"

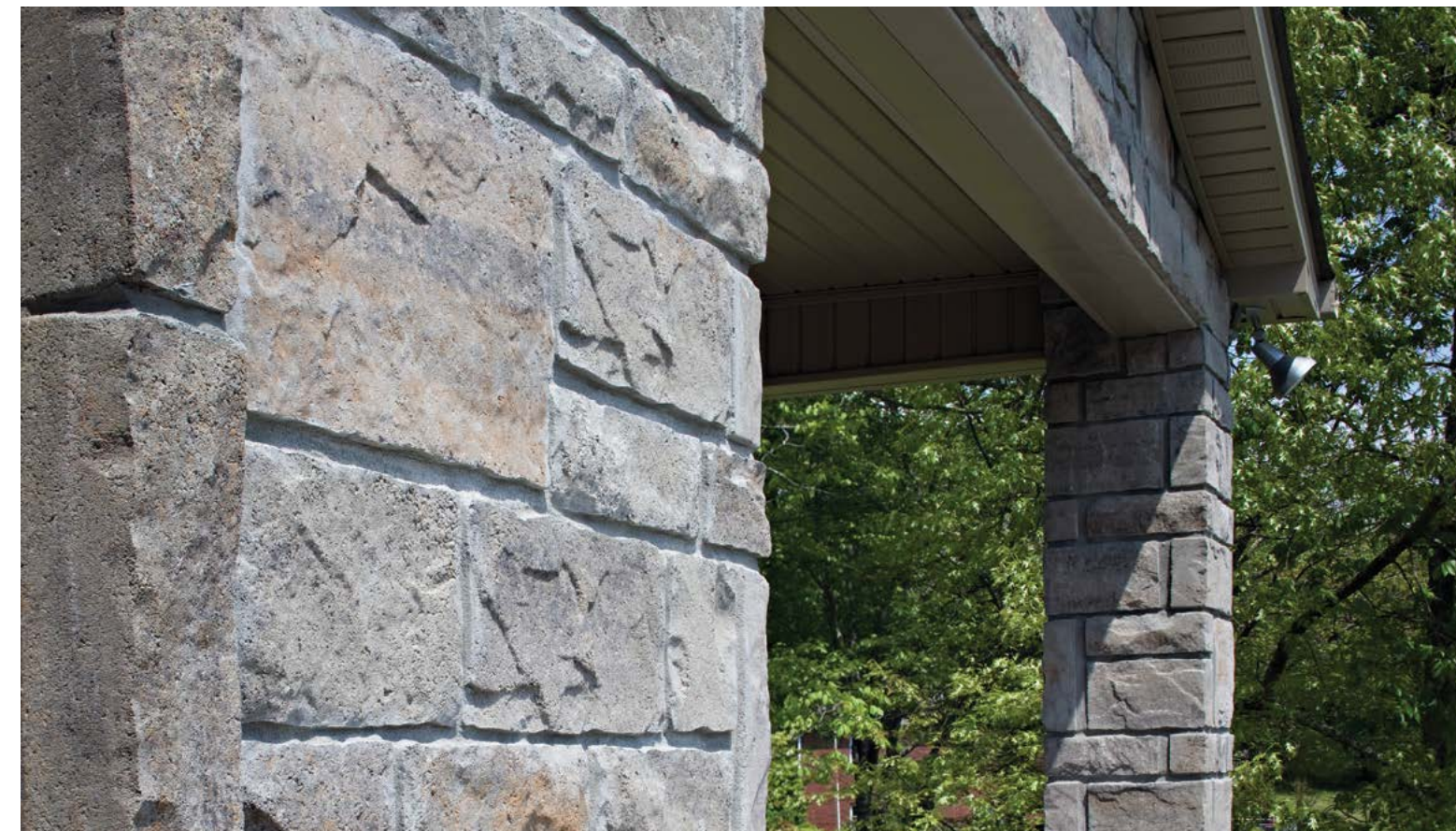
Length - 24"

*Nominal Dimensions

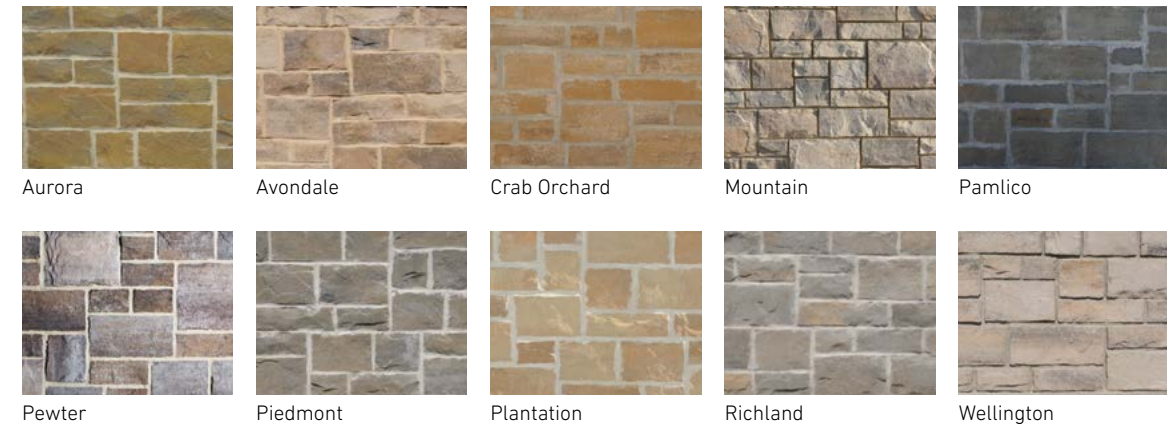


Waterford™ Stone

Waterford™ Stone evokes the natural, time-honed look of hand-cut stone with its antiqued edges and textured face while featuring the modern benefits of a manufactured masonry veneer.



Colors



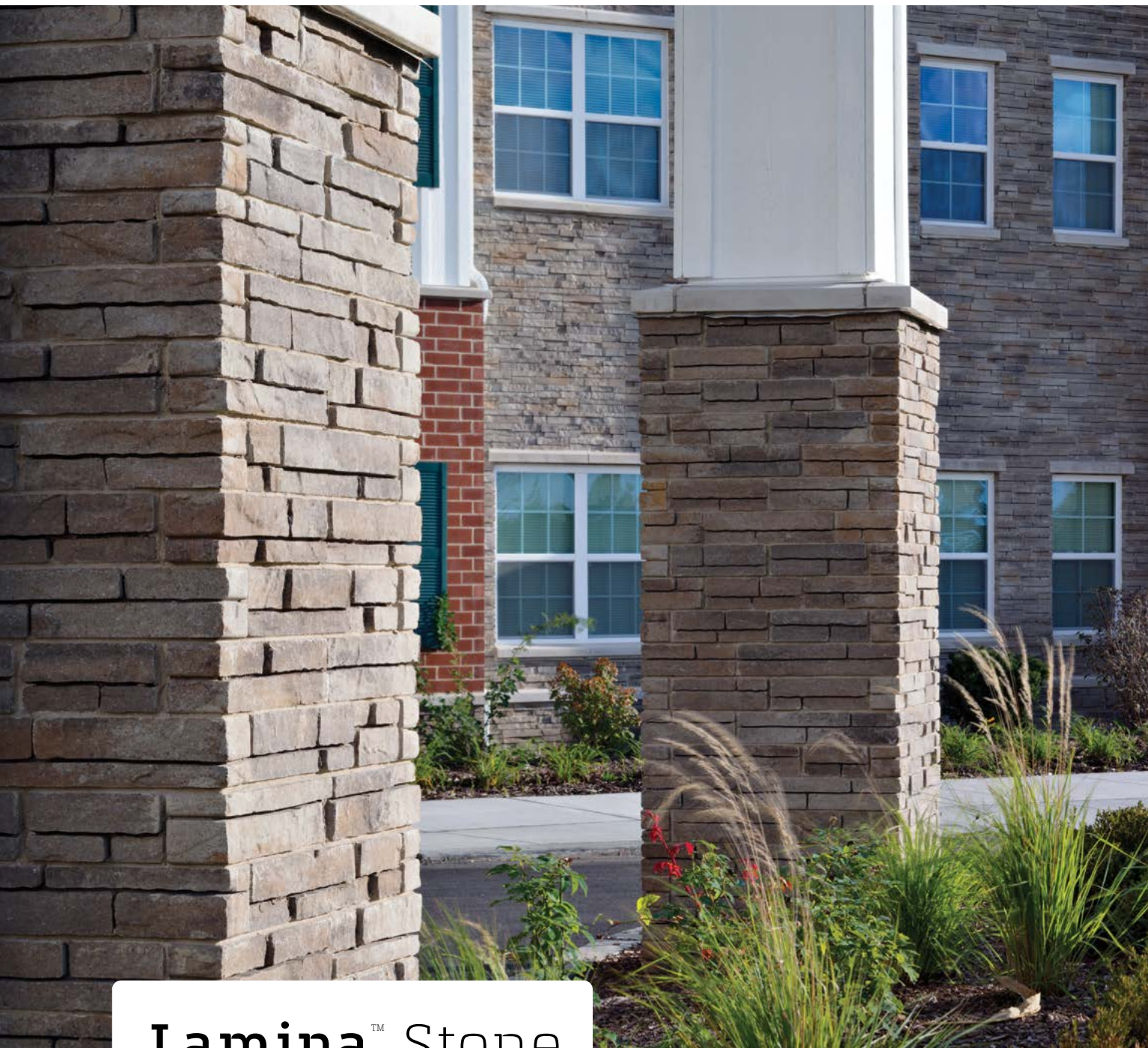
Dimensions

Unit A - 3⁵/₈" D x 4" H x var. L

Unit B - 3⁵/₈" D x 7" H x var. L

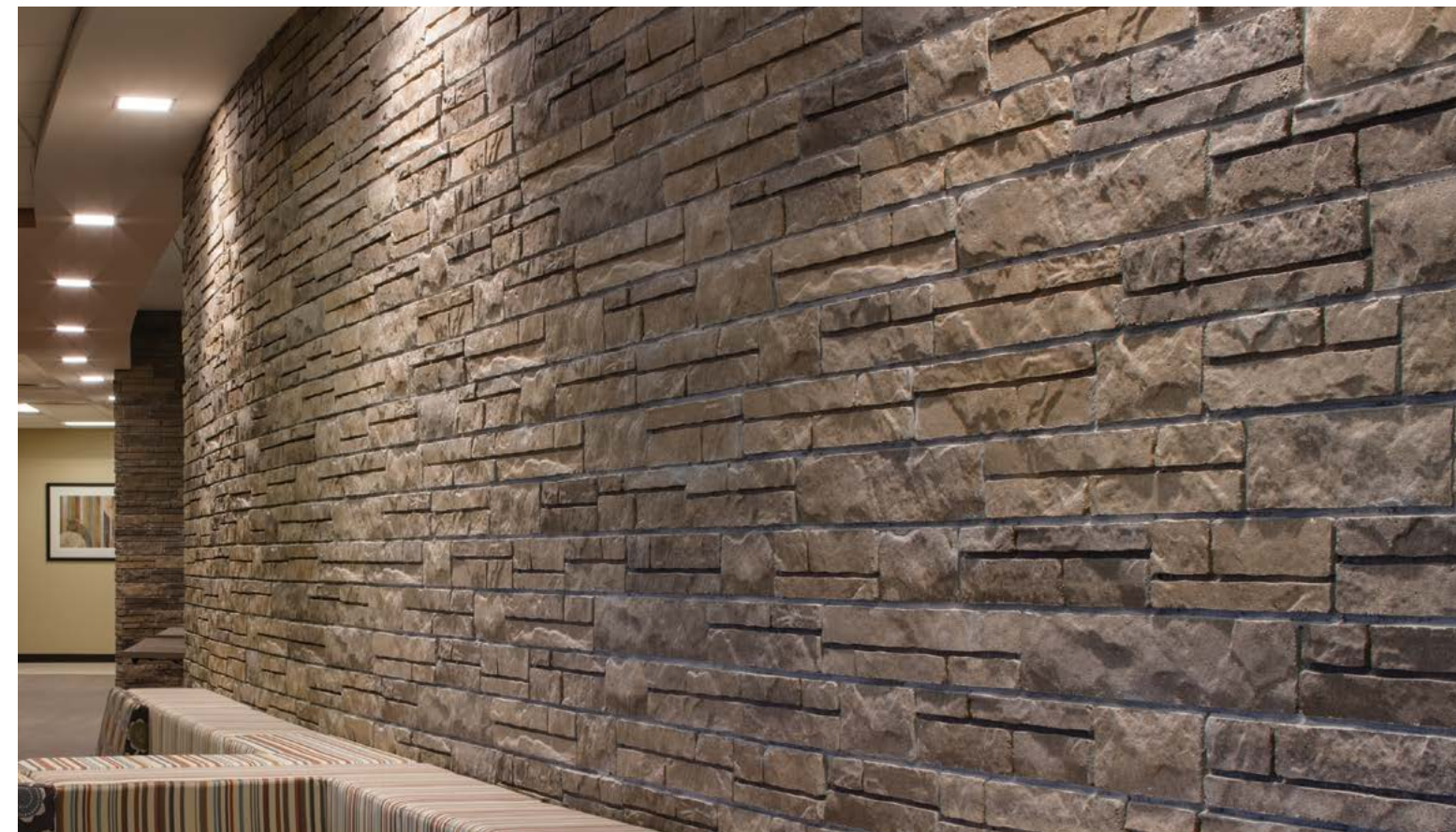
Unit C - 3⁵/₈" D x 11¹/₂" H x var. L

(Sold separately)



Lamina™ Stone

Lamina™ Stone emulates a stacked stone appearance and makes a bold statement. This multi-length stone offers a lot of benefits due to its unique installation and design.



Colors



Antique Ivory



Avondale



Highlands



London Gray



Mountain Stone



Pewter



Plantation Beige



Shelby Blend

Dimensions

Simulated Joint Units
 $3\frac{5}{8}$ " D x $3\frac{5}{8}$ " H x var. L

Solid Units
 $3\frac{5}{8}$ " D x $3\frac{5}{8}$ " H x var. L
 (Sold separately)



Mondrian™ Stone

Add prestige and distinction to your projects with Mondrian™ Stone. Available with a smooth or chisel face, this unit builds on the classic masonry aesthetic to deliver a clean, modern look for your projects. Whether you're using the two face textures in tandem or alone as an accent piece, Mondrian Stone allows for streamlined installation without the need for special corner pieces, making it the perfect solution for your next veneer project.



Colors



Dimensions

3⁵/₈" D x 11⁵/₈" H x 23⁵/₈" L



Cordova™ Stone

From top to bottom, Cordova™ stone can economically supply you with the look and feel of natural limestone. This high-quality masonry product adds beauty and elegance to any project and gives you all the benefits of a modern masonry veneer.

Colors



Textures



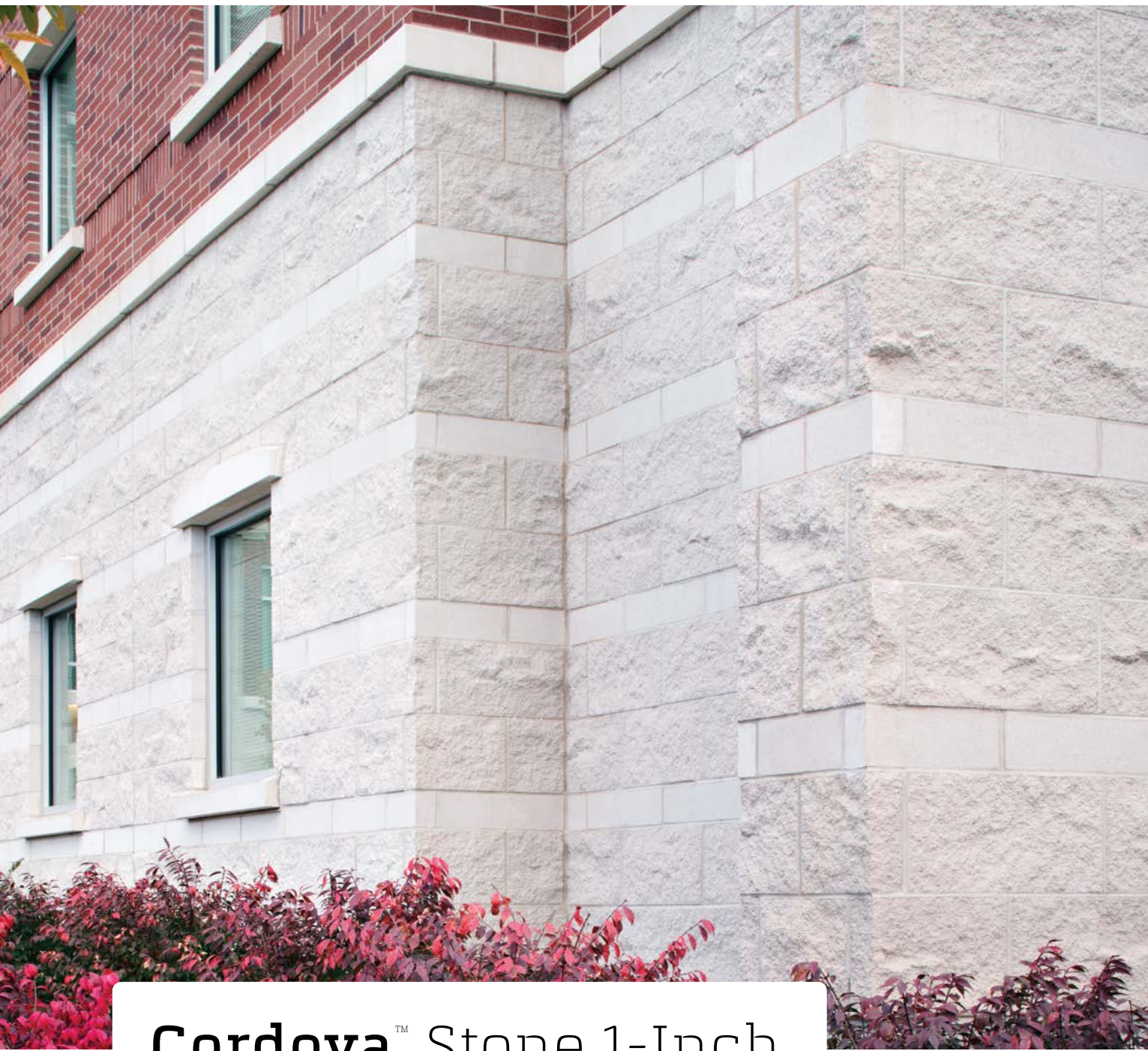
Dimensions*

Depth - 4"

Height - 4, 8, 12, 16, 18"

Length - 12, 16, 24"

*Nominal Dimensions
Also available in 1" deep thin veneer



Cordova™ Stone 1-Inch

From top to bottom, Cordova Stone can economically supply you with the look and feel of natural limestone. Cordova Stone™ 1-inch veneer is custom made with the look of natural stone and aggregate color consistent throughout the unit. This high-quality masonry product adds beauty and elegance to any project and gives you all the benefits of a modern masonry veneer.



Colors



Alabaster

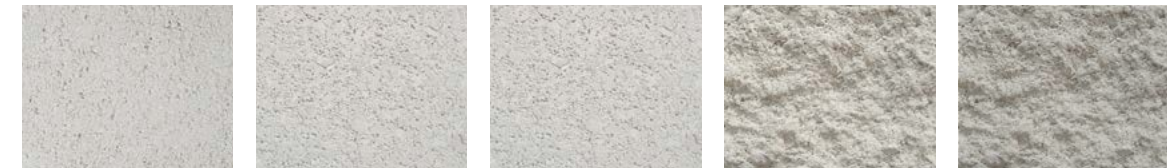
Buff

Graphite

Limestone

Midnight

Textures



Smooth

Ground Face

Ground + Sealed

Shot Blast

Shot Blast + Sealed

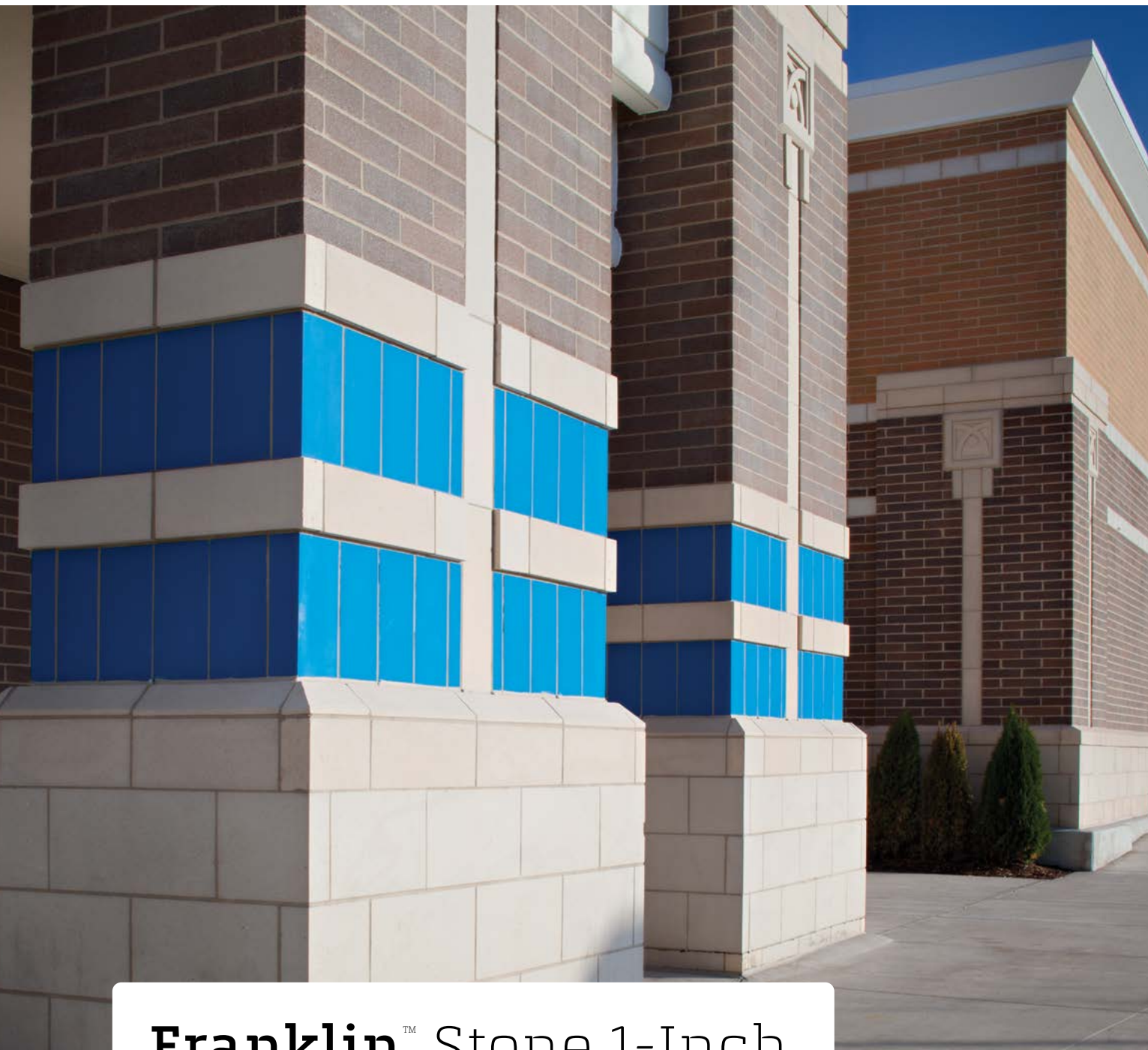
Dimensions*

Depth - 1"

Height - 12"

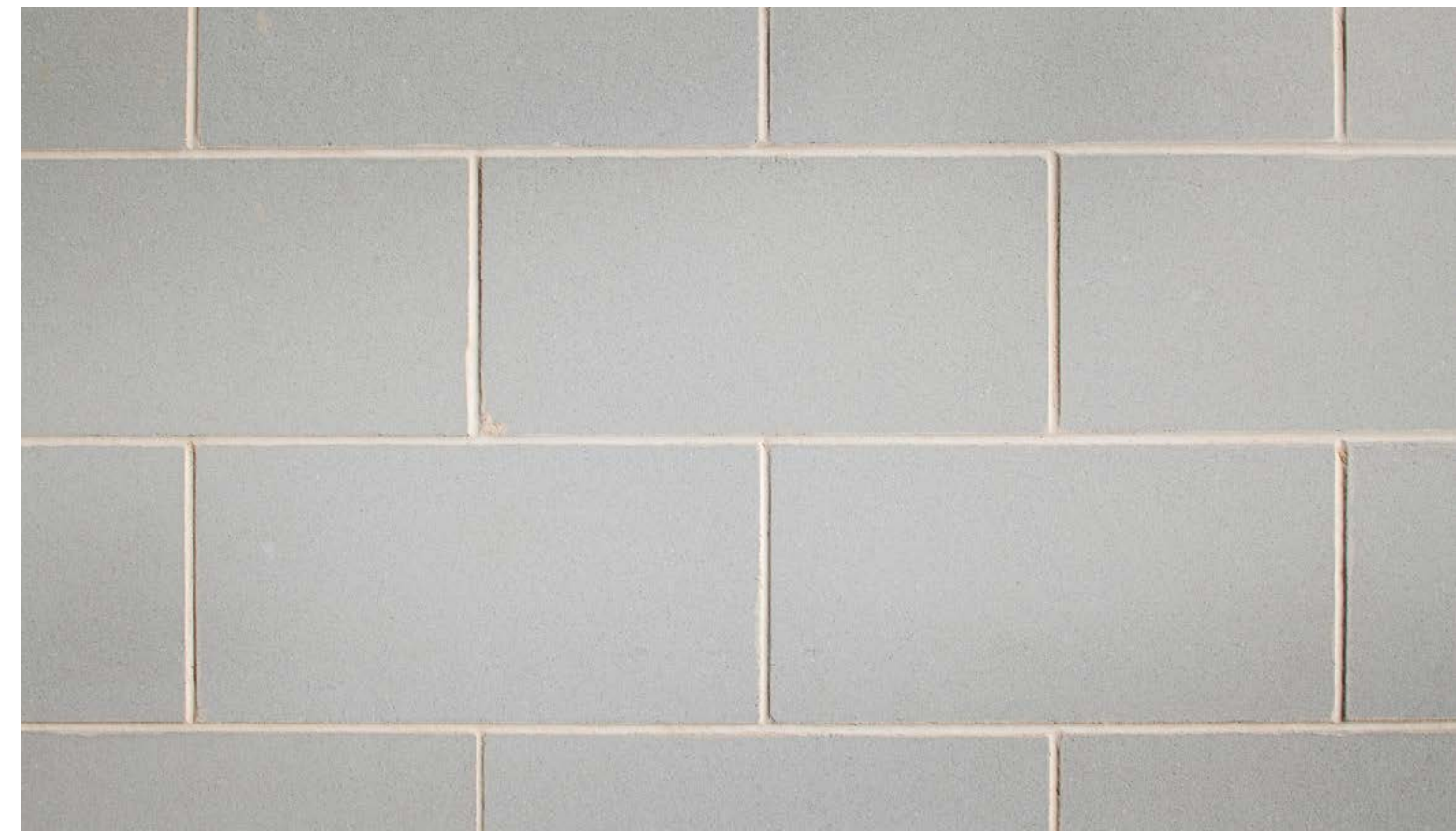
Length - 24"

*Nominal Dimensions



Franklin™ Stone 1-Inch

Whether you prefer smooth texture and clean lines, or a bold chiseled face, Franklin™ Stone combines the look of cast stone with manufactured masonry veneer's modern advantages. Franklin Stone is made from a mixture of white Portland cement combined with fine aggregates, resulting in a highly dense product with a natural limestone texture.



Colors



Textures



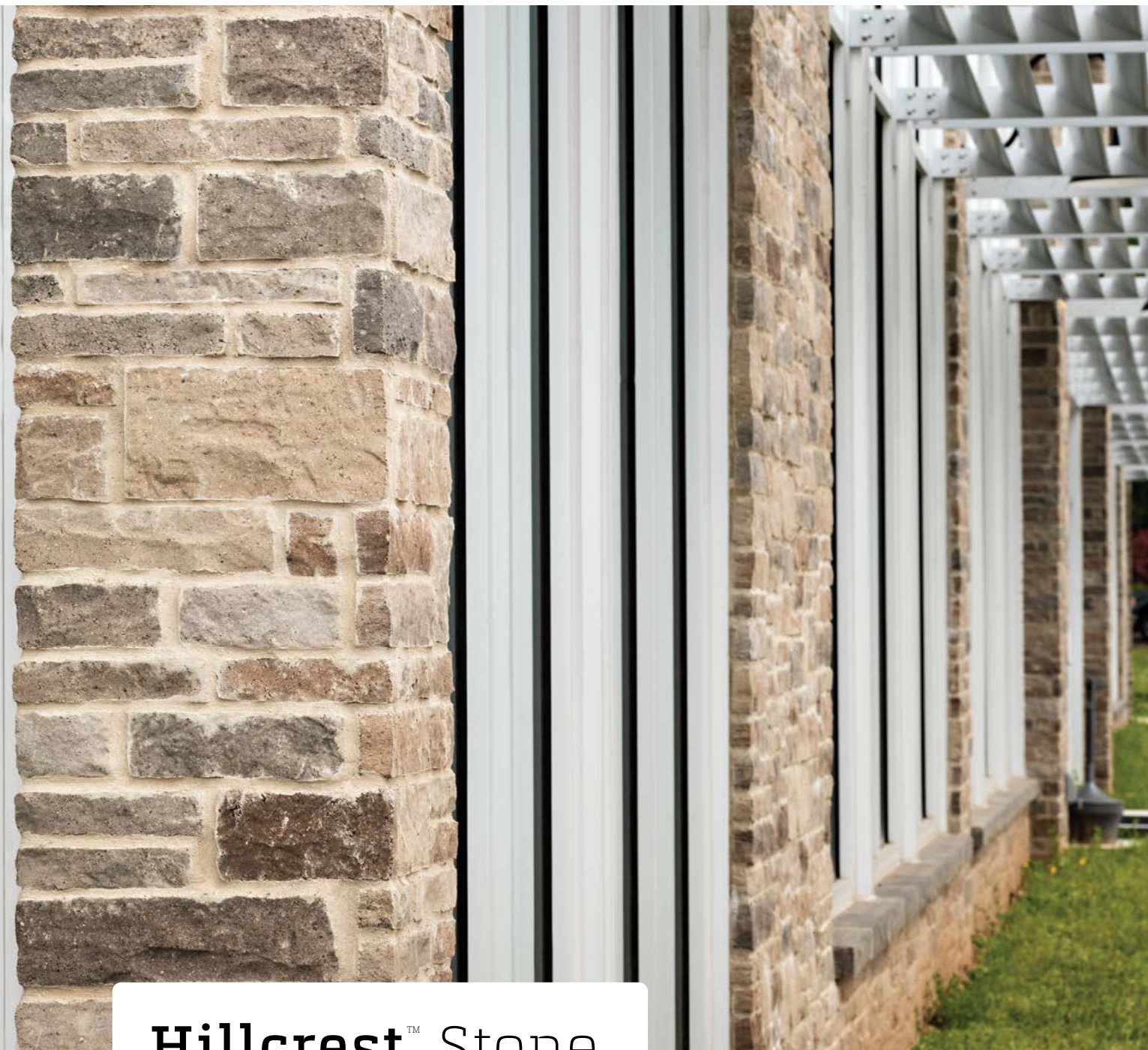
Dimensions*

Depth - 1"

Height - 4, 8, 12, 16"

Length - 24"

*Nominal Dimensions



Hillcrest™ Stone

Hillcrest™ Stone is the newest innovation to the Artisan Masonry Stone Veneer line. Boasting an aesthetic and modular system that emulates stacked stone, Hillcrest is designed to fit with tight dimensional tolerance which reduces installation time.



Field blended during construction 50/50

Colors



Alpine



Avondale



Pewter



Sable



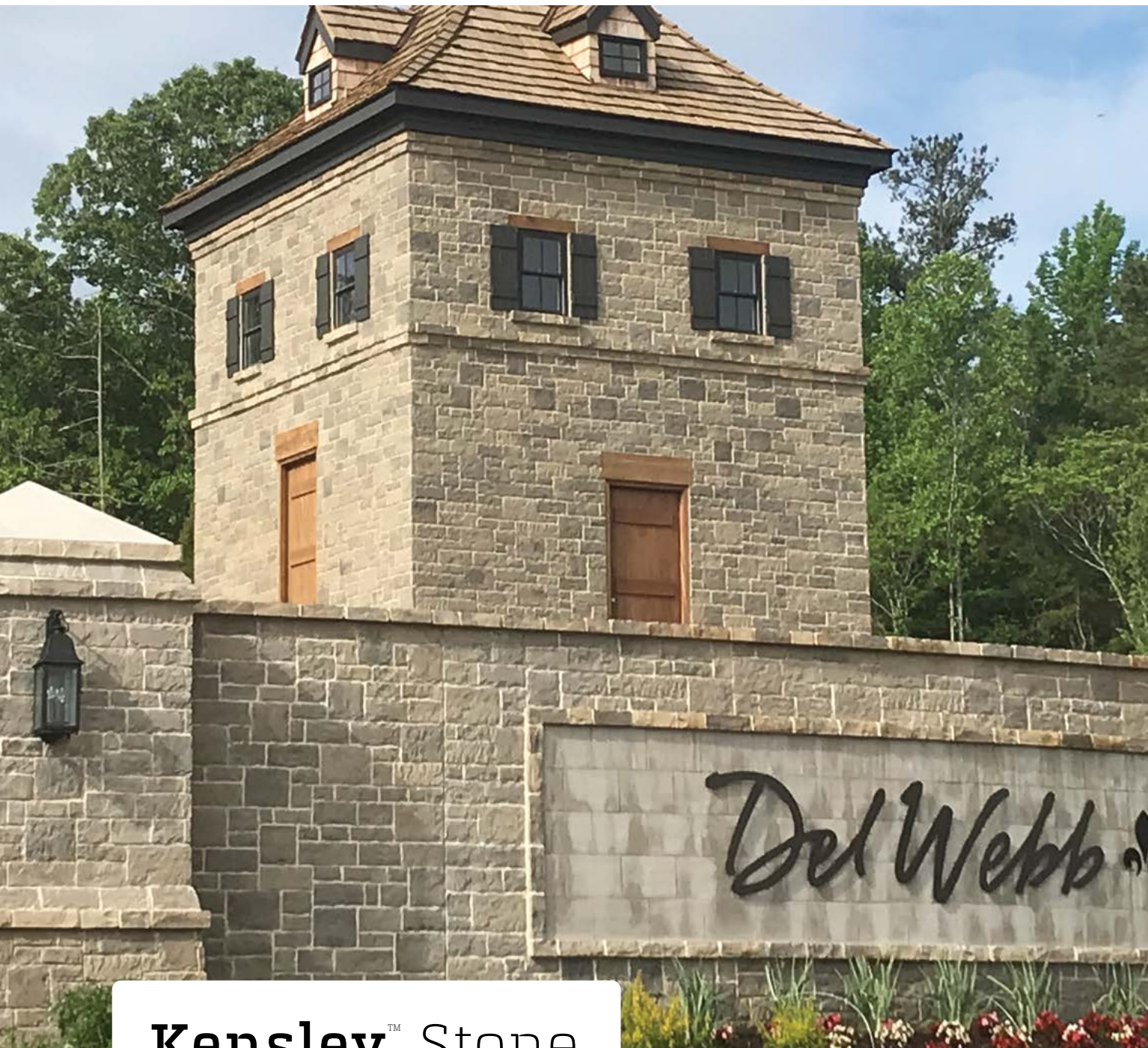
Timber

Dimensions

Depth - 1 1/8 to 1 5/8"

Height - 2, 3, 4, 6"

Length - 6, 8, 10, 12, 14, 16, 20"



Kensley™ Stone

Kensley™ Stone Thin Veneer boasts a traditional ashlar pattern with a 3/8" mortar joint. Kensley Stone is designed to reflect the timeless aesthetics of natural limestone look while minimizing install time and cost.



Field blended during construction 50/50

Colors



Avondale



Cabernet



Dogwood



Pewter



Wheat

Dimensions

Depth - 1 1/8" to 1 5/8"

Height - 4, 6, 10"

Length - 6, 8, 10, 12, 14, 16"



Westpeak™ Stone

Westpeak™ is another texture in the Artisan Masonry Stone Veneers® line to provide additional options to enhance your project. Boasting a pattern that provides a horizontal course at 2½" and 3" heights, this dry stack product is designed to fit with tight dimensional tolerance which reduces installation time.



Colors



Magnolia



Onyx



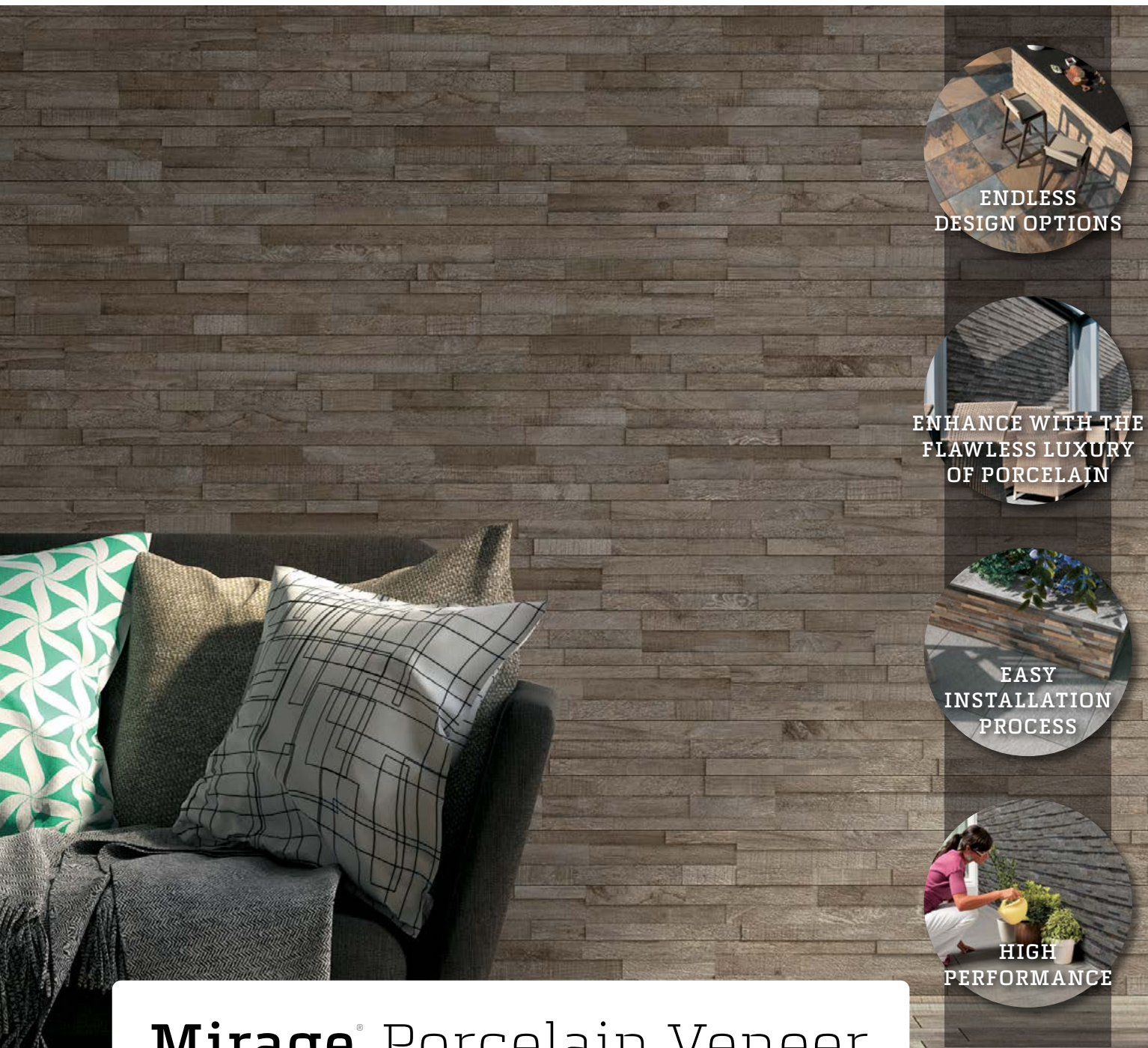
Wheat

Dimensions

Depth - 1½ to 1⅝"

Height - 2½, 3"

Length - 8, 10, 12, 14, 16"

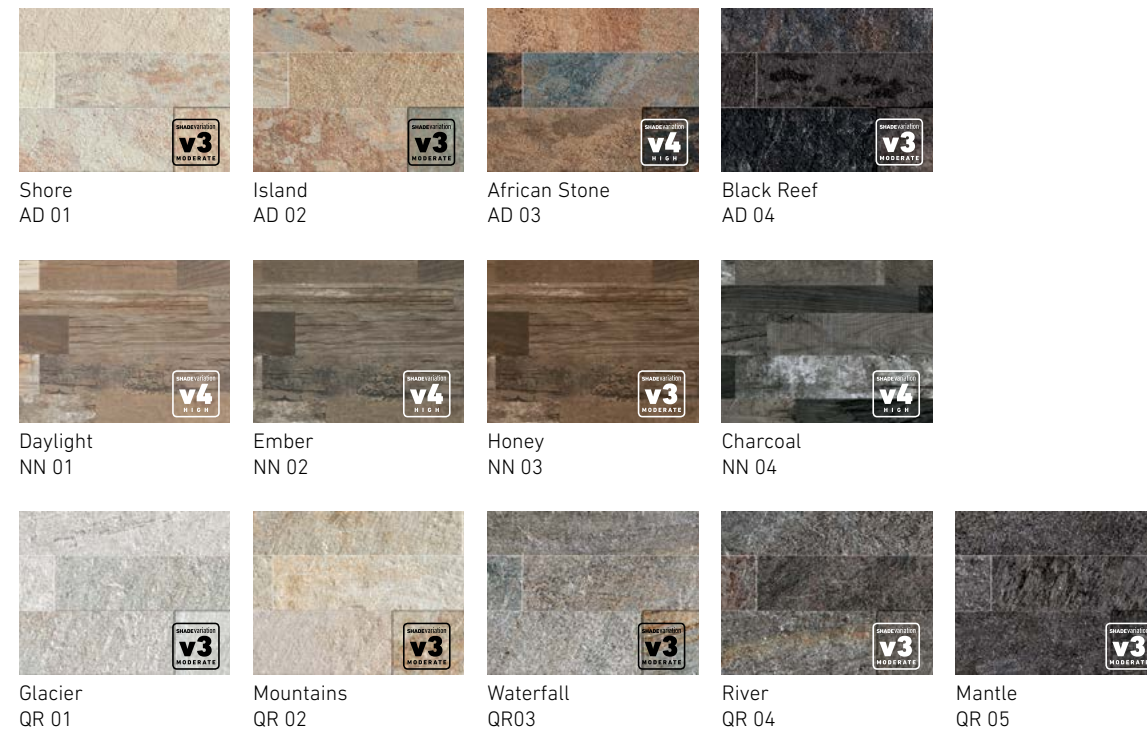


Mirage® Porcelain Veneer

Mirage® Porcelain Veneer empowers those looking to elevate their portfolio and drive distinction among their peers. Blending the line between high-end aesthetics and functionality in a dramatic fashion, porcelain veneer delivers instant depth to a living space, commercial property or business setting.



Colors

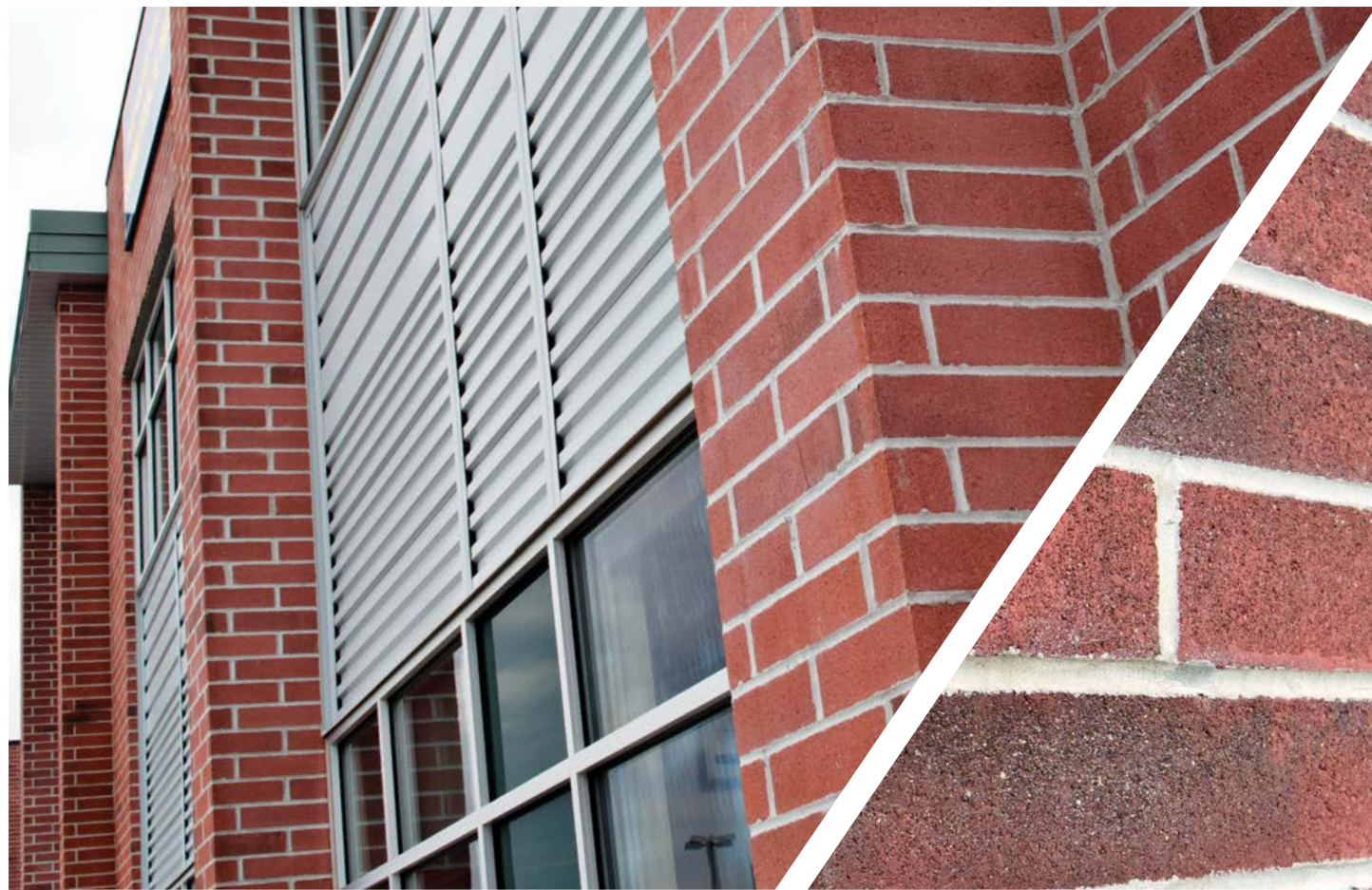


Dimensions

Depth - 3/8" - 7/16" var.

Height - 4"

Length - 18"



Amerimix® Preblended Mortar, Grout & Stucco

Amerimix pre-blended mortar, grout and stucco products are easy to mix and always consistent. That means your crews can spend more time on the wall and build big, fast with Amerimix pre-blended products.

For construction professionals who look beyond the traditional way of thinking, Amerimix is a better, more dependable way to build. Our pre-blended products are developed by contractors for contractors – providing consistency backed by proven results.

Confidence and Productivity for Every Job

- No more hassle or guesswork with on-site mixing — our computer batched premixed mortars save you valuable time on the jobsite
- In higher seismic zones and the areas with strict building requirements, Oldcastle Architectural and Echelon Masonry has the deep expertise and fast on-site support to help you meet the demands
- Pre-blended products offer Masons and Contractors the most consistent and reliable solutions for projects
- The flexibility to meet your working style — whether 80-pound bags or 1,000-pound bulk bags, we have the range of selections to accommodate you
- In-person support on your jobsite when you need it, for quick solutions and problem resolutions
- Meets or exceeds ASTM Specifications



Portland, Lime & Sand Mortar – AMX 400 Series

The AMX 400 Series is a factory blend of portland cement, hydrated lime and dried sand. The AMX 400 Series is specially formulated to provide high water retention, exceptional workability and superior bond strength. Available in types N, S and M.

- Reduced labor costs and jobsite trash
- High bond strength
- Excellent workability
- Extended board life for less retempering in hot and windy climates



Masonry Cement & Sand Mortar – AMX 500 Series

The AMX 500 Series is a factory blend of masonry cement and dried sand. The AMX 500 Series is specially formulated to provide high water retention, exceptional workability and superior bond. Available in Types N, S and M.

- Reduced labor costs and jobsite trash
- High bond strength
- Excellent workability
- Extended board life for less retempering in hot and windy climates



Stone Veneer Mortar – AMX 470

High performance mortar designed to set and grout artificial stone on horizontal or vertical concrete or concrete masonry substrates.

- Good bond and shear resistance
- Increased yield compared to typical field mix mortars
- Available in gray and buff and can be custom colored to meet your needs



Stone Veneer Mortar – AMX 485

Pre-blended to meet the most stringent standard for bond strength. Ideal for high-strength bonding of both natural and manufactured veneers to various substrates including masonry, CMU, exterior-grade plywood and more.

- Exceeds shear bond strength requirements of ANSI 118.4, 118.11 and 118.15
- Meets MVMA install guide specifications
- Superior sag resistance



Polymer Modified Stone Veneer Mortar – AMX 475 PSV

High performance, polymer modified mortar designed with superior bond strength and ability to grout artificial stone on horizontal and vertical surfaces to concrete or masonry substrates.

- Added polymers enhance the bond between veneer and substrate
- Superior bond strength
- Good bond and shear resistance
- Available in gray or buff and can be custom colored to meet your needs



Colored Stucco – AMX 775C

Portland-based stucco, factory blended with finely-milled pigments to ensure precise, consistent, durable stucco finish colors in scratch, brown and finish coat applications.

- Available 20 standard stucco colors
- Can be customized to match any color
- Available in select regions only



Stucco Texture Finish – AMX 780 T

Decorative, portland based top coat for one, two or three coat stucco systems. AMX 780 T is factory blended to provide excellent workability and a variety of textured finishes, that can be painted with coatings designed for high pH surfaces.

- Paintable
- Durable
- Superior workability



Stucco Sand Texture Finish – AMX 790 SSF

Decorative, portland based top coat for one, two or three coat stucco systems. AMX 790 SSF is factory blend designed to provide a 'sand' or 'floated' finish that can be painted with coatings designed for high pH surfaces.

- Factory mixed for consistent textures
- Paintable
- Superior workability



Premium & Pumpable Base Fibered Stucco – AMX 740 PREMIUM

Factory blended, fibered, pump grade portland/lime cement plaster for conventional scratch and brown stucco applications. It is specifically formulated to allow maximum flow for use with mechanical pumps without the addition of extra water – reducing the incidence of shrinkage cracks associated with pump mixes.

- Fire rated per IBC assemblies
- Higher flexural strength, greater impact resistance
- Scratch & brown over steel or wood framing



Water Repellent Masonry Cement – AMX 510 WRM

Designed for applications where a water repellent mortar is required in combination with water repellent masonry units to ensure maximum water resistance.

- Repellent agent is proportioned correctly in every batch
- Eliminates field addition of water repellent



ECHELON[®]

© 2021 Oldcastle[®] APG, Inc. All Rights Reserved. ECH21-556