



ECHELON™

Masonry Stone Veneers

THE NEXT GENERATION *of* MASONRY

Echelon is backed by the robust technical know-how of Oldcastle® APG, and we invest millions of dollars annually in the research and development of new products. You can trust that the products and services under the Echelon brand are also rooted in practicality for modern construction demands. They look beautiful while still offering your project the latest efficiencies.







Artisan Masonry Stone Veneers® are designed around the realities of today's building environment, utilizing quality materials and innovative manufacturing techniques. Our veneer products emulate the look, tone and texture of natural stone but with superior durability, energy efficiency, streamlined installation and minimal maintenance.





CONTENTS

FULL BED VENEERS

- 6 Aria Slim Stri™
- 8 Aria Slim™
- 10 Waterford™ Stone
- 12 Lamina™ Stone
- 14 Mondrian™ Stone
- 16 Mondrian™ Smooth
- 18 Cordova™ Stone

THIN VENEERS

- 20 Hillcrest™ Stone
- 22 Kensley™ Stone
- 24 Westpeak™ Stone
- 26 Mirage® Porcelain Veneer

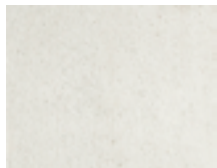
SOLUTIONS

- 28 Masonry Solutions
- 30 Amerimix®



ALBA STONE

Colors



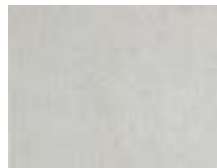
Alabaster



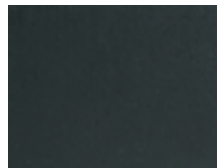
Buff



Graphite



Limestone



Midnight



Dimensions

3 $\frac{5}{8}$ " D x 3 $\frac{5}{8}$ " H x 35 $\frac{5}{8}$ " L

NOTE: Corner units make up 44% of units on pallet



Aria Slim™



Colors & Textures

					Smooth
					Ground Face
					Ground + Sealed
					Shot Blast
					Shot Blast + Sealed
Alabaster	Buff	Graphite	Limestone	Midnight	

Dimensions

3 5/8" D x 3 5/8" H x 35 5/8" L



Waterford™ Stone

Colors



Avondale



Wellington



Mountain



Crab Orchard



Pamlico



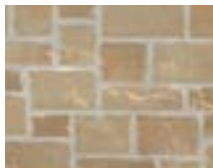
Piedmont



Aurora



Richland



Plantation

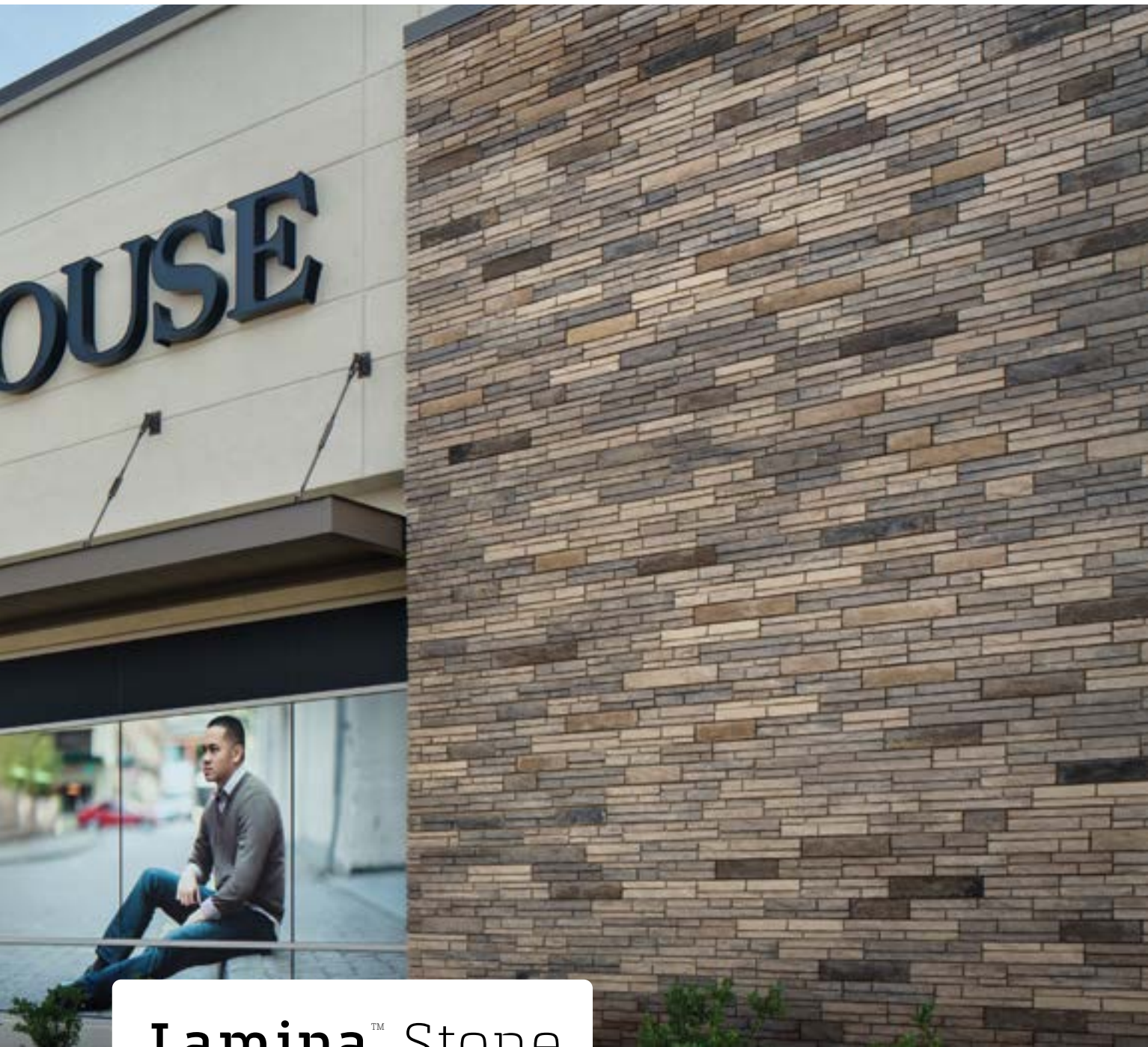
Dimensions

Unit A - 3⁵/₈" D x 4" H x var. L

Unit B - 3⁵/₈" D x 7" H x var. L

Unit C - 3⁵/₈" D x 11¹/₂" H x var. L

(Sold separately)



Lamina™ Stone

Colors



Avondale



Highlands



Pewter



Antique Ivory



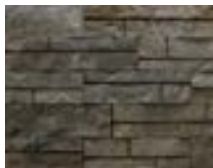
Mountain Stone



Plantation Beige



London Gray



Shelby Blend

Dimensions

Simulated Joint Units
3 $\frac{5}{8}$ " D x 3 $\frac{5}{8}$ " H x var. L

Solid Units
3 $\frac{5}{8}$ " D x 3 $\frac{5}{8}$ " H x var. L
(Sold separately)



Mondrian™ Stone

Colors



Avondale



Pearl



Pewter



Highlands



Buff



Crab Orchard



Danville Beige



Leuders Grey

Dimensions

3⁵/₈" D x 11⁵/₈" H x 23⁵/₈" L



Mondrian™ Smooth

Colors



Avondale



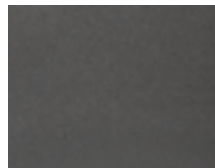
Pearl



Pewter



Highlands



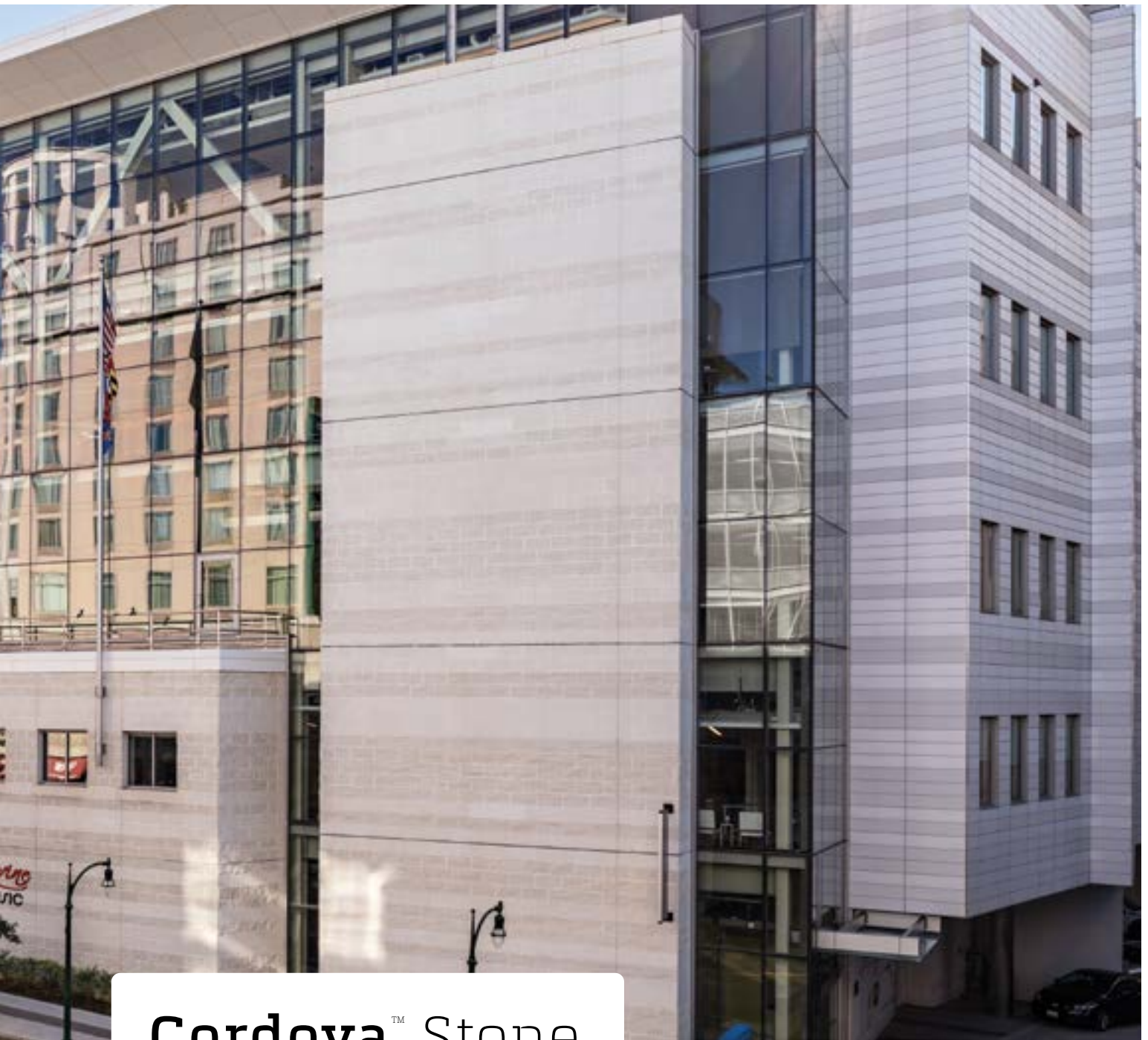
Graphite



Dimensions

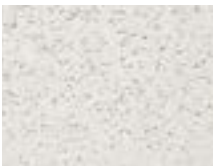
3⁵/₈" D x 11⁵/₈" H x 23⁵/₈" L

Swatches represent color only, not surface texture



Cordova™ Stone

Colors



Alabaster



Buff



Graphite



Limestone



Midnight



Textures



Smooth



Ground Face



Ground + Sealed



Shot Blast



Shot Blast + Sealed

Dimensions*

Depth - 4"

Height - 4, 8, 12, 16, 18"

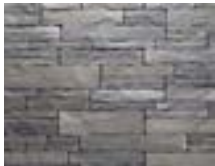
Length - 12, 16, 24"

*Nominal Dimensions
Also available in 1" deep thin veneer



Hillcrest™ Stone

Colors



Alpine



Sable



Timber



Avondale



Pewter



Field blended during construction 50/50

Dimensions

Depth - 1 1/8 to 1 5/8"

Height - 2, 3, 4, 6"

Length - 6, 8, 10, 12, 14, 16, 20"



Kensley™ Stone

Colors



Pewter



Avondale



Cabernet



Dogwood



Wheat



Field blended during construction 50/50

Dimensions

Depth - 1 1/8 to 1 5/8"

Height - 4, 6, 10"

Length - 6, 8, 10, 12, 14, 16"



Westpeak™ Stone

Colors



Magnolia



Onyx



Wheat

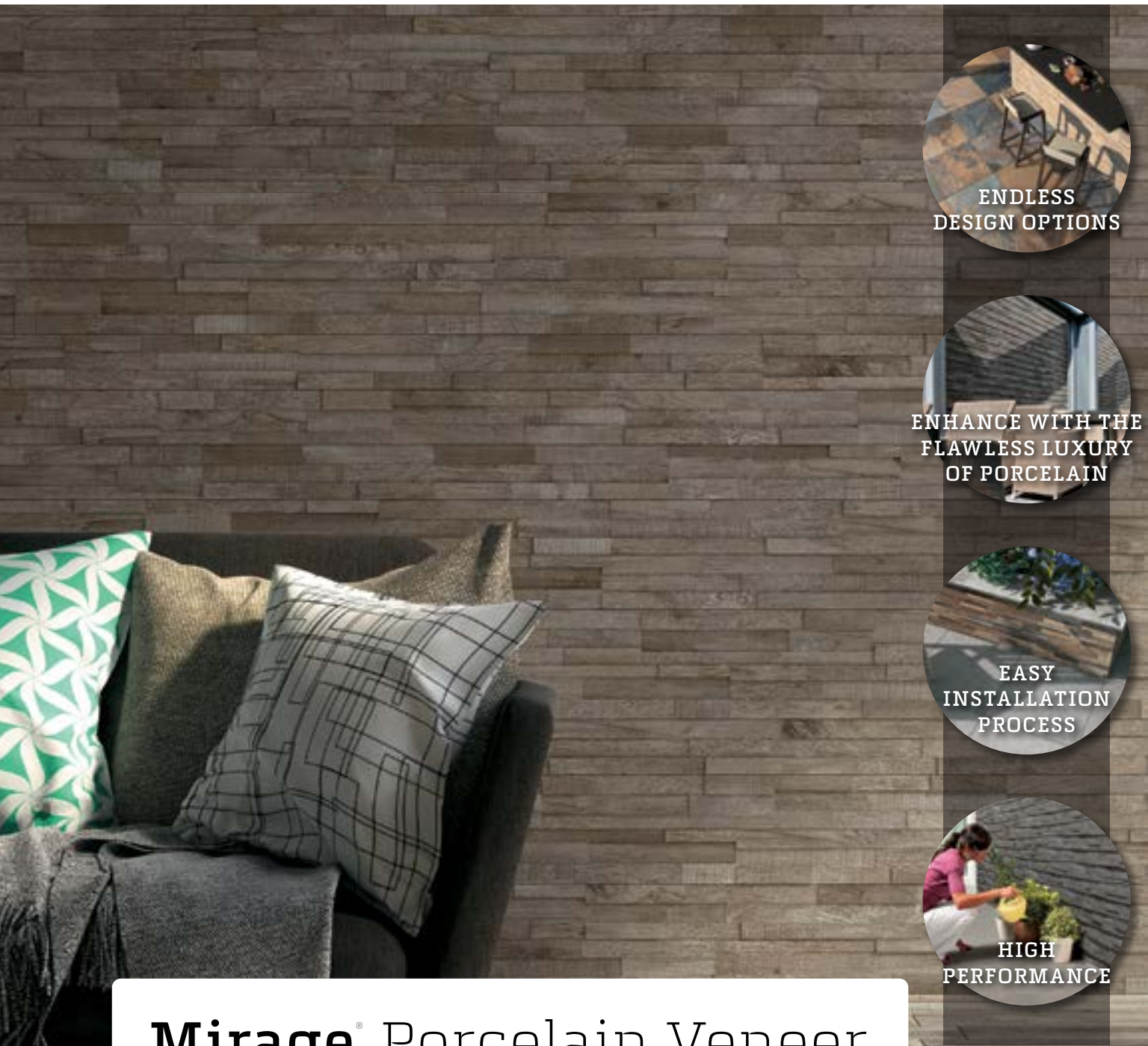


Dimensions

Depth - 1 1/8 to 1 5/8"

Height - 2 1/2, 3"

Length - 8, 10, 12, 14, 16"



Mirage® Porcelain Veneer

Colors



Shore
AD 01



Island
AD 02



African Stone
AD 03



Black Reef
AD 04



Daylight
NN 01



Ember
NN 02



Honey
NN 03



Charcoal
NN 04



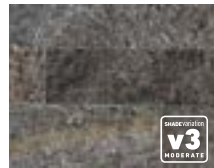
Glacier
QR 01



Mountains
QR 02



Waterfall
QR03



River
QR 04



Mantle
QR 05

Dimensions

Depth - 3/8 - 7/16 var.

Height - 4"

Length - 18"



We strive to ensure that all architects, designers and construction professionals can work hand-in-hand with Echelon to facilitate the creation of their residential, commercial, industrial and institutional projects.

We have teamed up with BIMsmith to help you more easily integrate Echelon products and combinations into your design software.

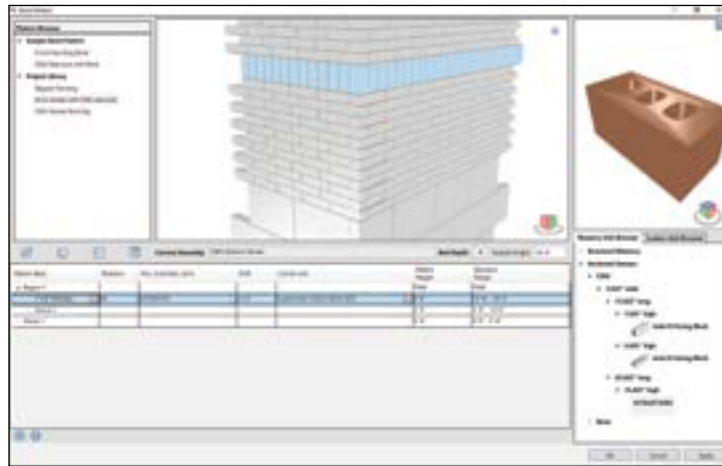
The new Echelon BIM library provides access to a variety of technical information and a completely free platform for professionals to search, configure and download BIM objects for our masonry products. Now, it's easier than ever to bring what you have in mind to life.

You can also use BIMsmith Forge, a tool that allows an easy configuration of complete assemblies. Create your project from scratch or choose from one of our model assemblies and save time! Our other professional tools that we have developed are always available on SketchUp, AutoCAD, Autodesk and other commonly used 3D design and rendering software. Add the colors and textures that are unique to Echelon bricks and stones and you are all done!



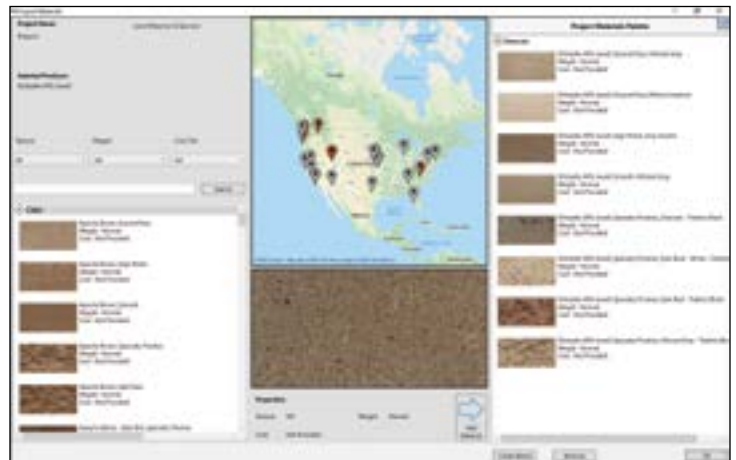
Architectural Revit Modeling

Masonry iQ is a Revit plugin that generates a true component-level BIM model for masonry units.



Design details like section and elevation views are derived from the BIM model, eliminating the need to manually draw them, and keeping them in sync with the data in the model.

This unique approach allows for modularity studies, custom patterns, rendering with content from local producers and many other benefits.





Amerimix® Preblended Mortar

Amerimix mortars offer the ultimate in performance, cost savings and labor efficiency – helping your next masonry project run smoothly from start to finish.

Compared to traditional field-blended mortars, Amerimix pre-blended mortars are precisely proportioned to eliminate batch-to-batch variations and deliver consistent performance, color and strength.

When you're ready for a superior mortar, it's time to ditch the sand pile and switch to Amerimix.

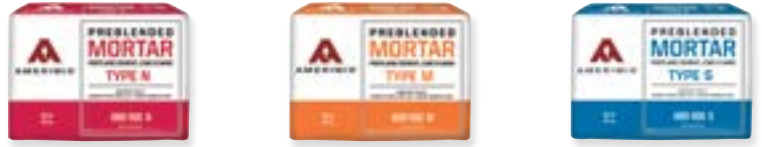
Features & Benefits

- Factory blended to ensure consistency and quality
- Provides greater yields, reduced labor costs and reduced jobsite trash as compared to field mixes
- Available in 80 lb bags, or 3,000 lb bulk bags for use with Amerimix silo delivery systems
- Custom colors to match, homogenize or contrast brick, block or stone
- Contribute to LEED points

Portland, Lime & Sand Mortar – AMX 400 Series

The AMX 400 Series is a factory blend of portland cement, hydrated lime and dried sand. The AMX 400 Series is specially formulated to provide high water retention, exceptional workability and superior bond strength. Available in types N, S and M.

- Reduced labor costs and jobsite trash
- High bond strength
- Excellent workability
- Extended board life for less retempering in hot and windy climates



Masonry Cement & Sand Mortar – AMX 500 Series

The AMX 500 Series is a factory blend of masonry cement and dried sand. The AMX 500 Series is specially formulated to provide high water retention, exceptional workability and superior bond. Available in Types N, S and M.

- Reduced labor costs and jobsite trash
- High bond strength
- Excellent workability
- Extended board life for less retempering in hot and windy climates



Stone Veneer Mortar – AMX 470

High performance mortar designed to set and grout artificial stone on horizontal or vertical concrete or concrete masonry substrates.

- Good bond and shear resistance
- Increased yield compared to typical field mix mortars
- Available in gray and buff and can be custom colored to meet your needs



Polymer Modified Stone Veneer Mortar – AMX 475 PSV

High performance, polymer modified mortar designed with superior bond strength and ability to grout artificial stone on horizontal and vertical surfaces to concrete or masonry substrates.

- Added polymers enhance the bond between veneer and substrate
- Superior bond strength
- Good bond and shear resistance
- Available in gray or buff and can be custom colored to meet your needs



Stone Veneer Mortar – AMX 485

Pre-blended to meet the most stringent standard for bond strength. Ideal for high-strength bonding of both natural and manufactured veneers to various substrates including masonry, CMU, exterior-grade plywood and more.

- Exceeds shear bond strength requirements of ANSI 118.4, 118.11 and 118.15
- Meets MVMA install guide specifications
- Superior sag resistance



Water Repellent Masonry Cement – AMX 510 WRM

Designed for applications where a water repellent mortar is required in combination with water repellent masonry units to ensure maximum water resistance.

- Repellent agent is proportioned correctly in every batch
- Eliminates field addition of water repellent





ECHELON™

© 2021 Oldcastle® APG, Inc. All Rights Reserved. ECH21-150