



# DESIGN GUIDE

SUPERLITE





Institute of Black Culture at the University of Florida, DLR Group  
Trendstone in Alamo (Gainesville, FL)

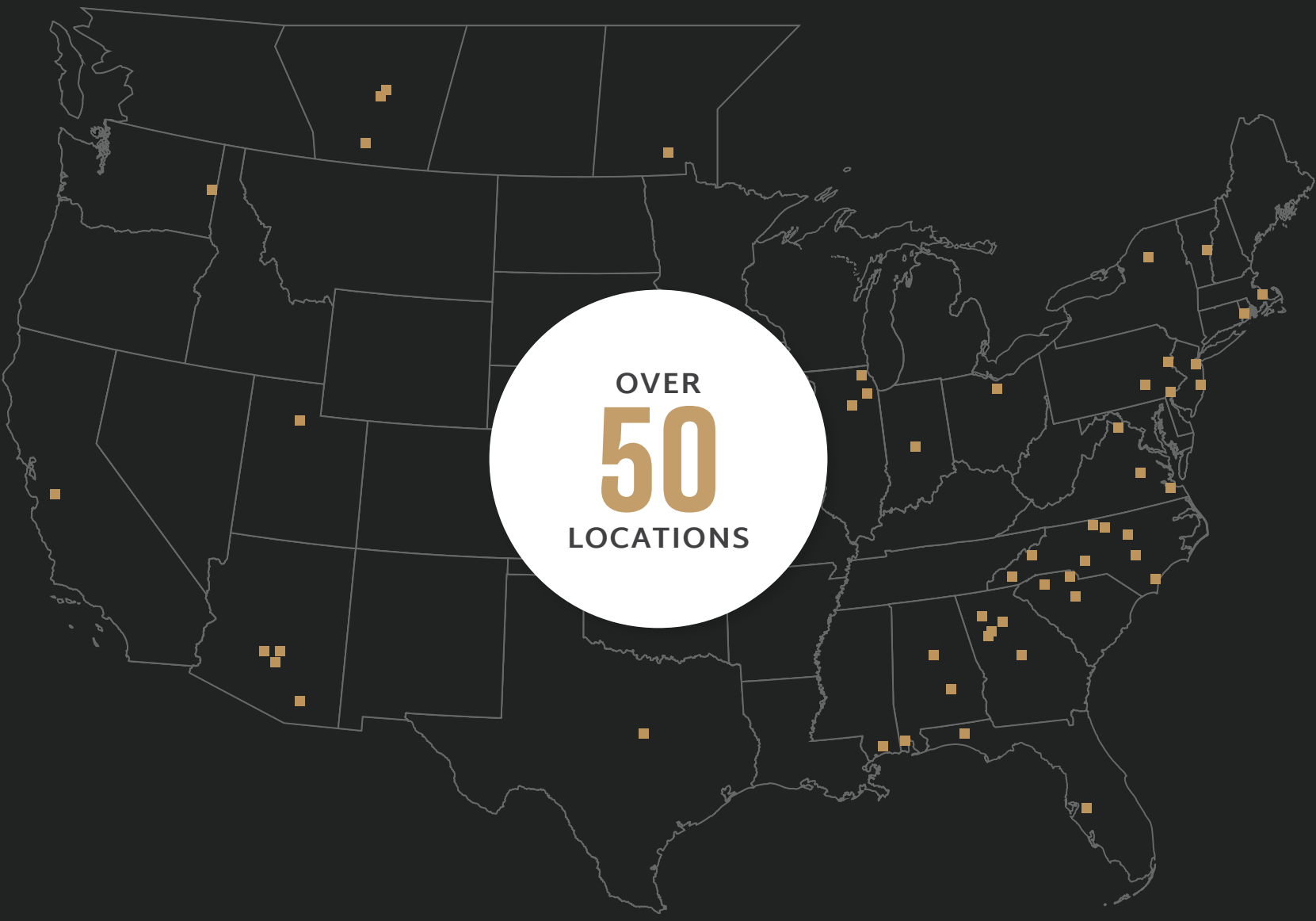
## WHY ECHELON?

For generations, Oldcastle® APG has been North America's leading manufacturer of building products and materials, well-established as an industry leader dedicated to being a true partner from project concept to completion and beyond. Echelon Masonry is a consolidation of our many masonry products, services and industry knowledge into a single brand, providing a singular go-to source for high-performance products and reliable expertise.

### INDUSTRY INNOVATORS

Echelon Masonry® is dedicated to meeting the ever-changing needs of the construction industry by investing millions of dollars annually in the research and development of new and innovative products. This unceasing pursuit of excellence has culminated in a comprehensive range of structural masonry products including premium architectural block, customizable concrete masonry units, full depth (anchored) and lightweight (adhered) veneers, and high-performance wall systems.





**NATIONAL PRESENCE**

With over 50 locations and a company culture characterized by a commitment to customer satisfaction, Echelon adheres to a level of service and consistency that no other brand can match. Our combination of local market presence and national capabilities allows us to meet and exceed the demanding needs of an ever-changing industry.

**REGIONAL SERVICES**

Our local companies maintain the confidence of builders, architects and consumers through our innovative technologies, premium architectural building products, committed service and on-time deliveries. Regionalized operation allows us to be a dedicated and responsive partner to find the right solution for any project challenge.



## WHY MASONRY?

Get more inspiration on how you can bring your next Echelon project to life.

[EchelonMasonry.com](https://EchelonMasonry.com)



### SUSTAINABILITY

Echelon Masonry is manufactured locally allowing you to achieve LEED credits for MRc2.



### COST EFFICIENCY

Upfront construction costs don't tell the whole story. When all factors are taken into account, masonry is 5.6% more economical than building with wood.



### ENERGY

Echelon's patented Insultech System delivers R-16.2 performance, exceeding energy code requirements.



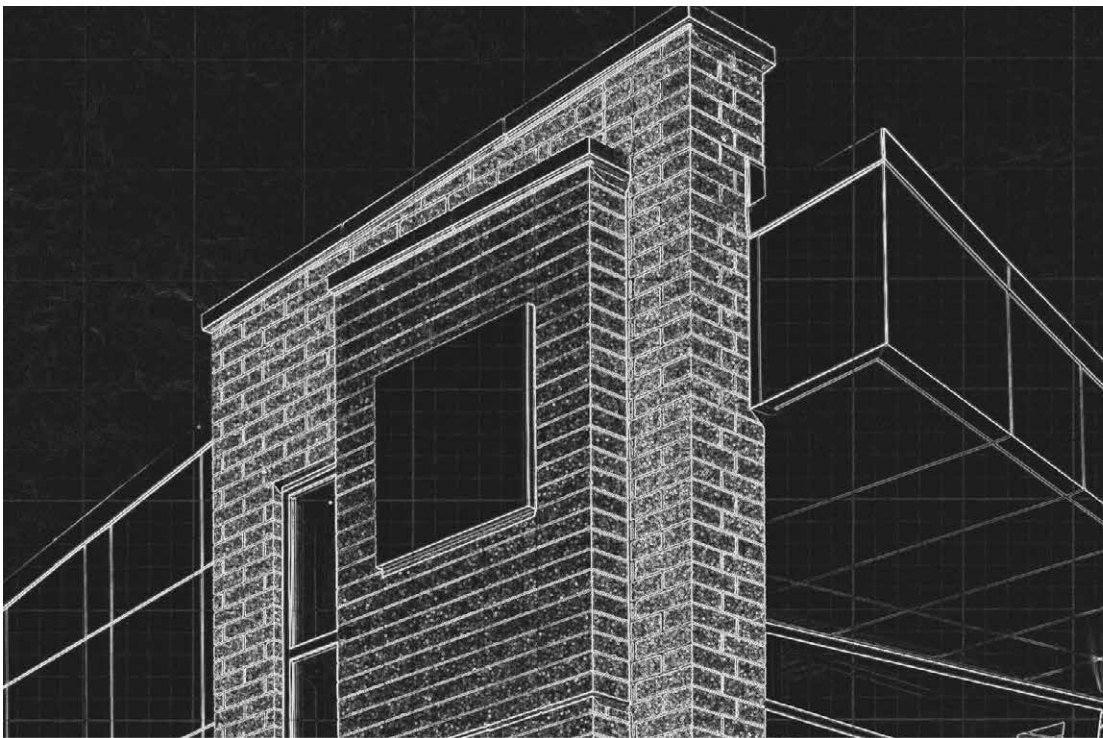
### RESILIENCY

Annually, non-masonry structures under construction experience up to \$157M in fire damage. Specifying masonry construction can help prevent these losses.



### DESIGN

No other material can replicate the masonry aesthetic or provide as much design flexibility in colors, textures and finishes.



**REALIZING YOUR  
DESIGN INTENT**

Take your project from  
concept to completion.



**WITH YOU AT  
EVERY STAGE  
OF THE PROCESS**



### EXPERT SUPPORT

Echelon's team of industry experts are by your side to answer questions and provide job-specific solutions from project concept to completion.



### ON-SITE TRAINING AND CEUS

We're glad to provide on-site training for complex projects and continuing education to make sure you're up-to-date on topics relevant to your work.



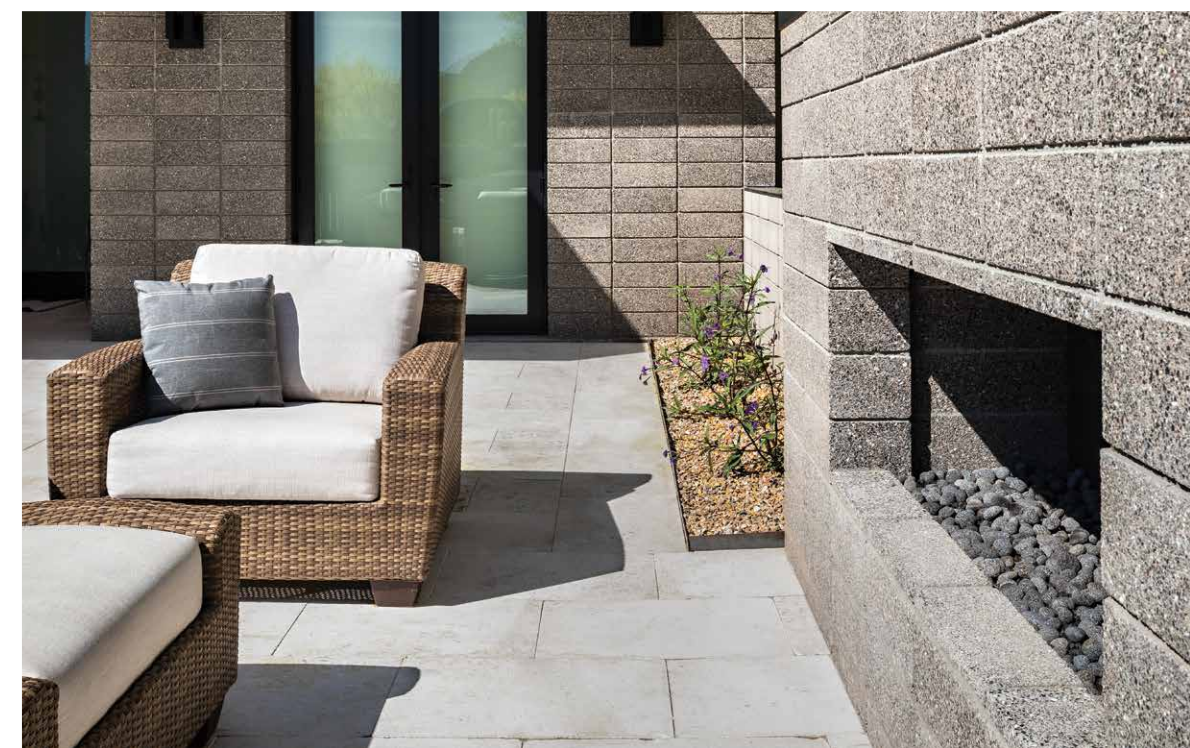
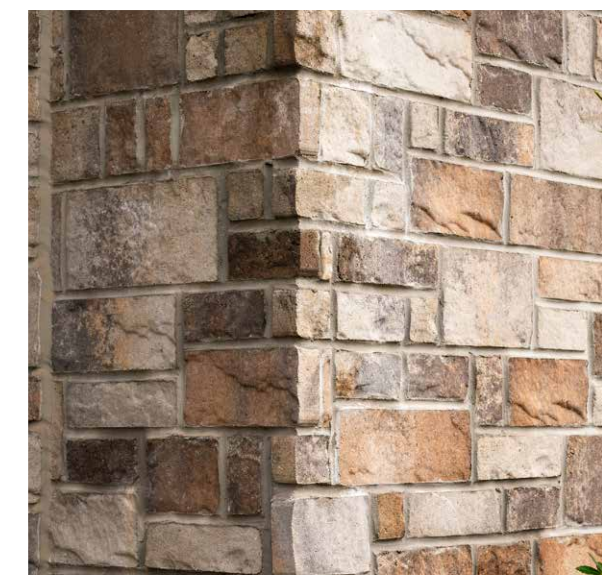
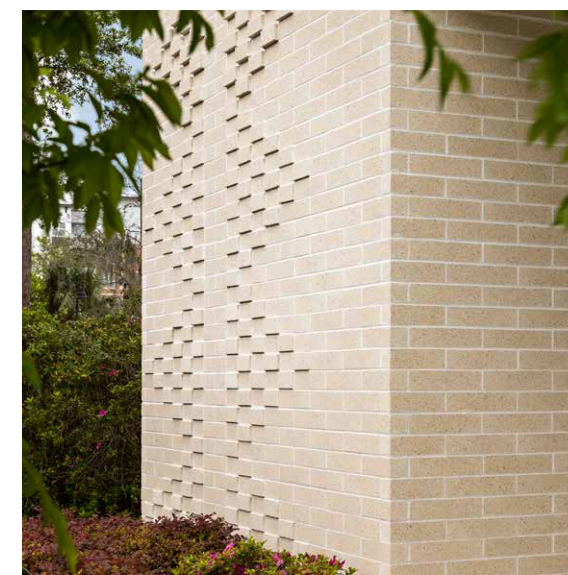
### MASONRY MODELING

In partnership with Masonry IQ, Echelon provides free access to an advanced Revit plugin tool giving you the ability to model faster, estimate earlier and take advantage of all the benefits of masonry you've been missing.



### FINISH THE JOB

Complete the job with Amerimix pre-blended mortar, designed to work with Echelon Masonry to deliver superior results.



Piney Woods Elementary, Quackenbush Architects  
Lamina Stone in Wellington Blend (Chapin, SC)



# TABLE OF CONTENTS

## ARTISAN MASONRY VENEER

### LIGHTWEIGHT VENEER

- 14 Cordova Stone
- 16 Trava
- 18 Stratica

### FULL DEPTH VENEER

- 22 Aria Slim
- 24 Cordova Stone

## ARCHITECTURAL CMU

### STANDARD MASONRY

- 28 Split Face
- 30 Precision

## ARCHITECTURAL CMU

### TRENWYTH MASONRY

- 34 Trattino
- 36 Mesastone
- 38 Trendstone

### STRUCTURAL BRICK

- 42 Quik-Brik Traditional
- 44 Harvard Brik
- 46 Founder's Finish

## MASONRY SYSTEMS

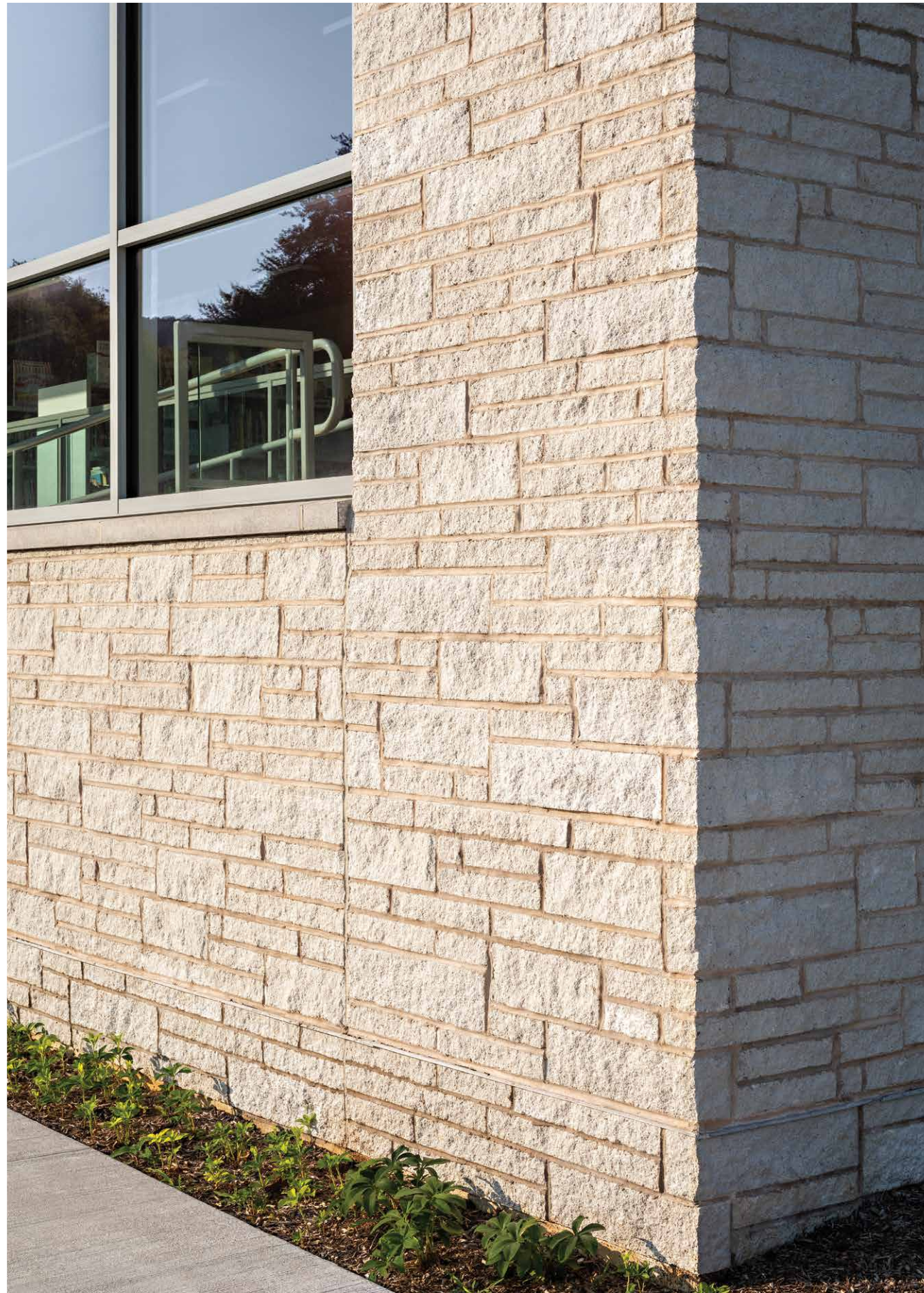
### PERFORMANCE ENHANCEMENTS

- 50 Thermal Performance
- 52 Acoustic Performance
- 54 Moisture Performance



Dimitriopolous Residence, Bruns Architecture  
Cordova Stone in Graphite (Fox Point, WI)

 <b>ECHELON</b> MASONRY	ARTISAN MASONRY VENEER
	<b>LIGHTWEIGHT VENEER</b>



# CORDOVA STONE™

## The sophistication of hand-cut natural stone

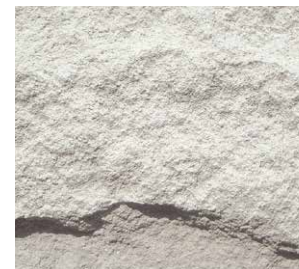
Cordova Stone™ is a high-density, pre-finished architectural stone cladding that achieves the prestigious look of natural limestone by incorporating all-natural aggregates, recycled content, and integral color throughout each unit. This timeless veneer offers the design flexibility of four texture options and is also available in full-depth options. **See page 24.**

## COLOR OPTIONS

Ground Face



Chisel



Alabaster

Buff

Granite

Midnight



### ADDITIONAL COLORS & TEXTURES AVAILABLE

Product colors vary by region. Scan the QR code to see your full regional color offering.



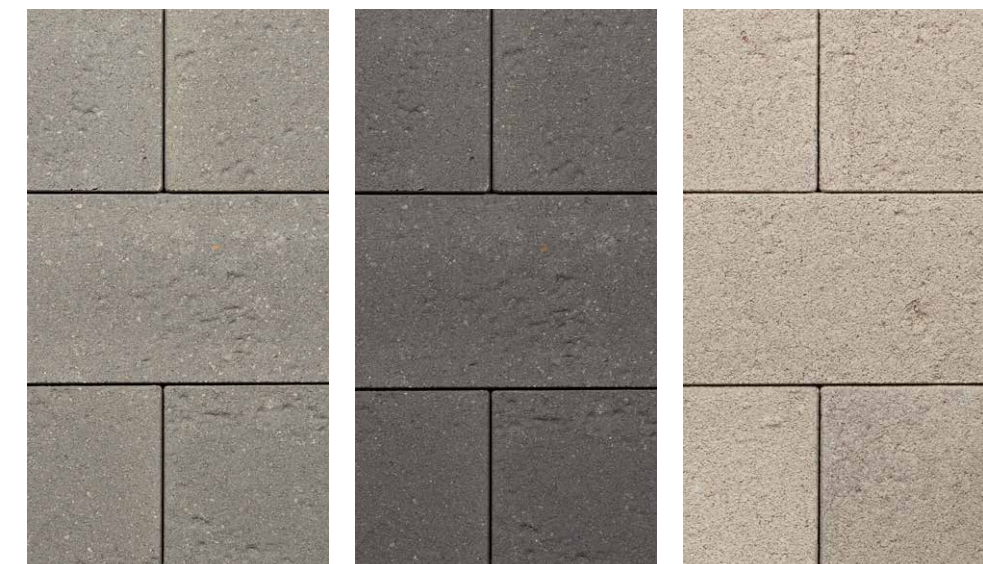


TRAVA™

**Distinctive travertine aesthetic with linear appeal**

The modern lines of Trava feature the distinctive face texture of natural travertine and is ideal for both interior or exterior applications. With finished edges that eliminate the need for corner units and integral color and water repellent throughout each unit, its sleek linear profile can be used alone or mixed with other materials to achieve a unique contemporary look.

COLOR OPTIONS



Ash

Carbon

Canvas



**ADDITIONAL COLORS AVAILABLE**  
 Product colors vary by region. Scan the QR code to see your full regional color offering.



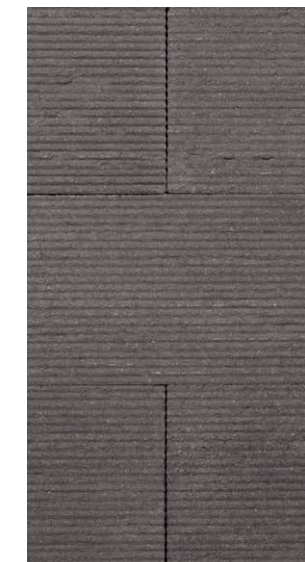


STRATICA™

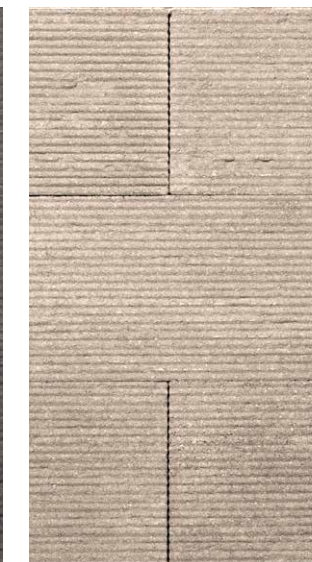
**Unique striated face that catches the light and the eye**

Statica offers the look of hand-tooled striations and delivers distinctive horizontal shadows that change with the light. The ultra-modern design of this architectural veneer features integral color and water repellent, textured ends for corner applications, and long clean sight lines. The touchable texture creates an eye-catching look when used alone or as part of a mixed material design.

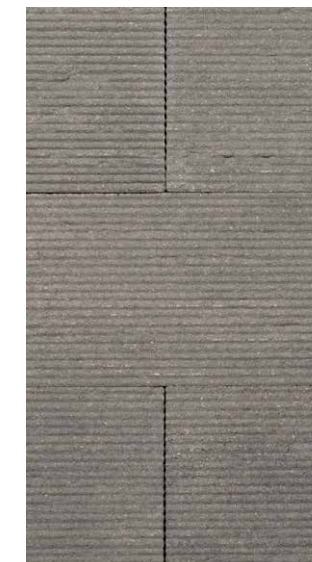
COLOR OPTIONS



Carbon



Canvas



Ash



**ADDITIONAL COLORS AVAILABLE**

Product colors vary by region. Scan the QR code to see your full regional color offering.



The Chiswick at Dunwood, HGA Architects  
Waterford Stone in London Grey (Fox Point, WI)

	ARTISAN MASONRY VENEER
	<b>FULL DEPTH VENEER</b>



# ARIA SLIM™

## Contemporary elongated linear aesthetic

The simplicity and integrity of concrete takes center stage in the contemporary lines of Aria Slim. Its avant-garde and minimalist design offers a modern touch to any architectural project, features integral color throughout each unit, and can be used to create stunning linear or modular patterns.

## COLOR OPTIONS

Smooth Face



Shot Blast



Alabaster

Buff

Graphite

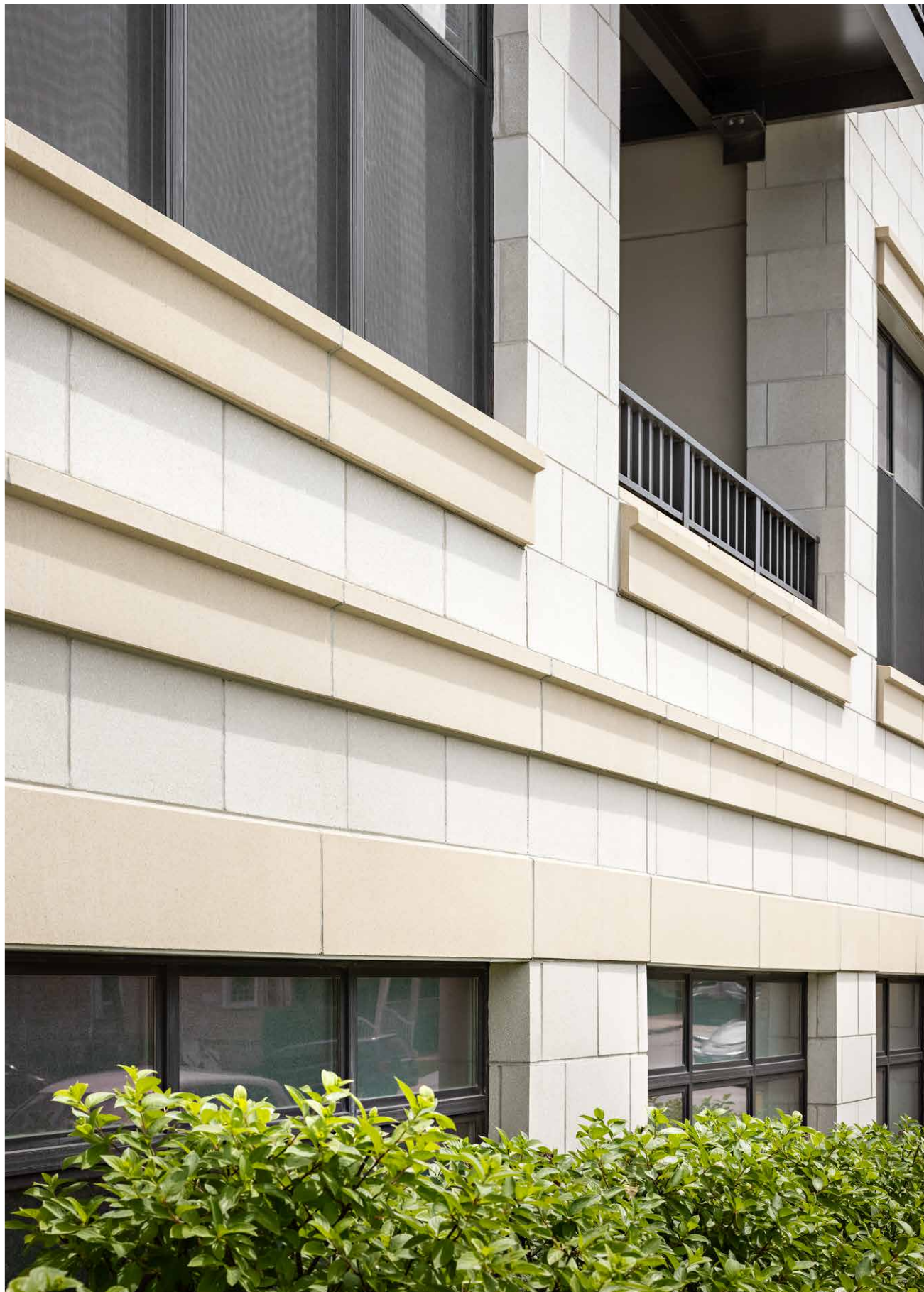
Midnight



### ADDITIONAL COLORS AVAILABLE

Product colors vary by region. Scan the QR code to see your full regional color offering.





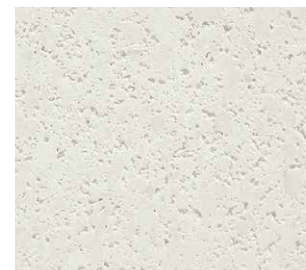
# CORDOVA STONE™

## The sophistication of hand-cut natural stone

Cordova Stone™ is a high-density, pre-finished architectural stone cladding that achieves the prestigious look of natural limestone by incorporating all-natural aggregates, recycled content, and integral color throughout each unit. This timeless veneer offers the design flexibility of four texture options and is also available as a lightweight thin veneer. **See page 14.**

## COLOR OPTIONS

Ground Face



Chisel



Alabaster

Buff

Granite

Midnight



**ADDITIONAL COLORS  
& TEXTURES AVAILABLE**

Product colors vary by region. Scan the QR code to see your full regional color offering.

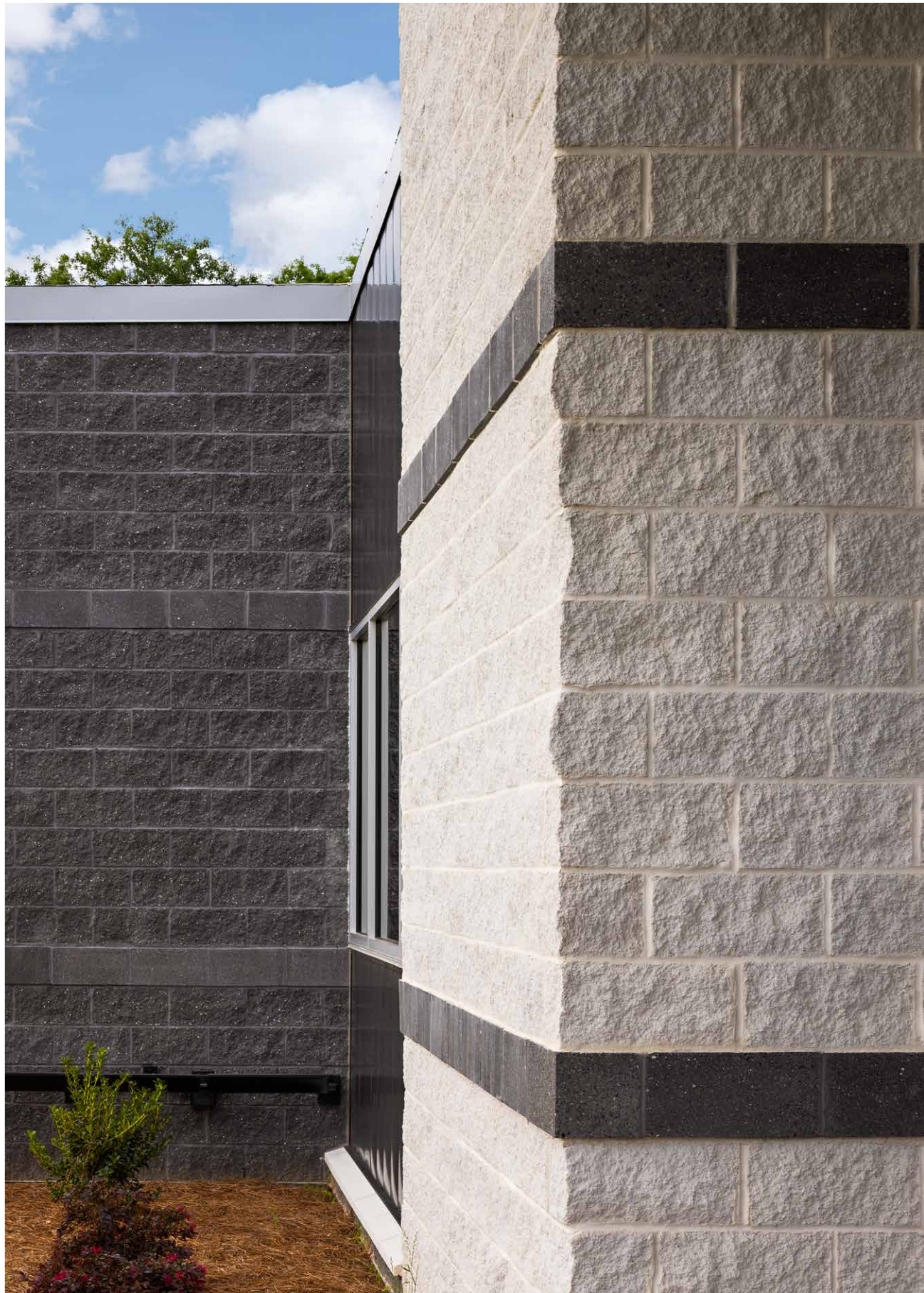




**ECHELON**  
MASONRY

ARCHITECTURAL CMU

**STANDARD MASONRY**



# SPLIT FACE

## Classic design that never goes out of style

Split Face concrete masonry units are molded with two concrete units attached face to face. The units are cured and then mechanically split apart, leaving the split face with a rough texture that emulates natural quarried stone and a distinctive appearance unique to every unit.

## COLOR OPTIONS



Regional Color Offerings



### ADDITIONAL COLORS AVAILABLE

Product colors vary by region. Scan the QR code to see your full regional color offering. Contact your local architectural rep for slump block, ribbed units and designer texture options.



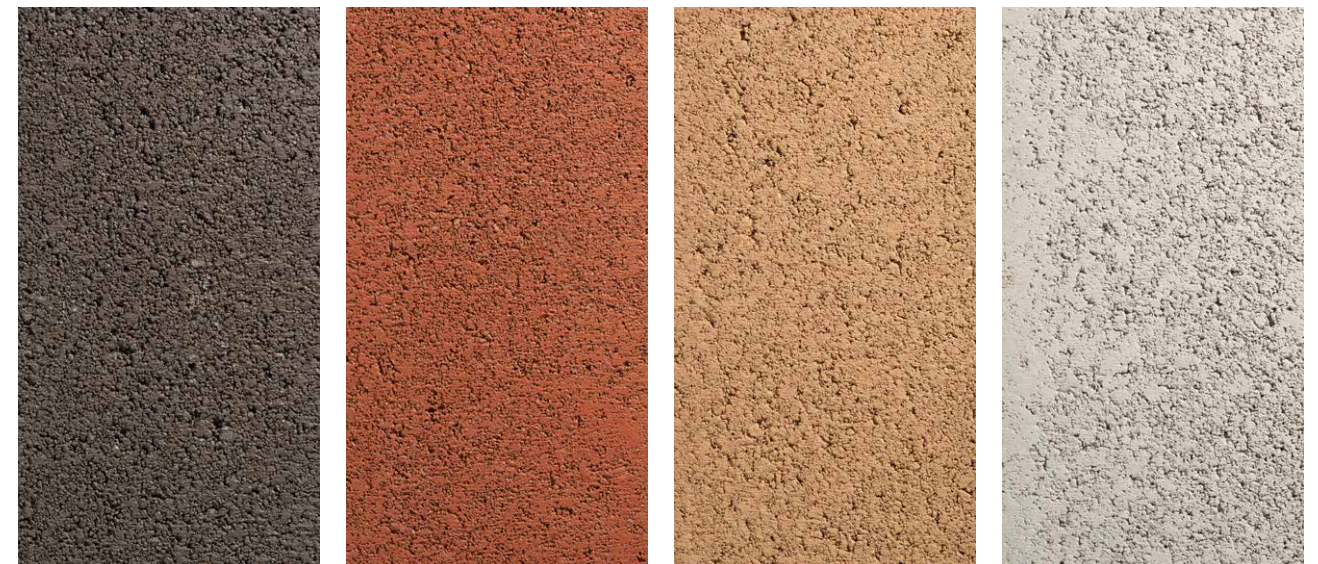


# PRECISION

## A natural, unpretentious masonry aesthetic

Precision CMU, also referred to as smooth face, exhibit a natural finish without showing the aggregate. These architectural concrete units are available in a wide array of integrally colored hues. If desired, units can also include pre-consumer recycled content and integral water repellent admixture to repel moisture and resist mold. Also available as a lightweight (adhered) and full depth (anchored) veneer.

## COLOR OPTIONS



Regional Color Offerings




### ADDITIONAL COLORS AVAILABLE

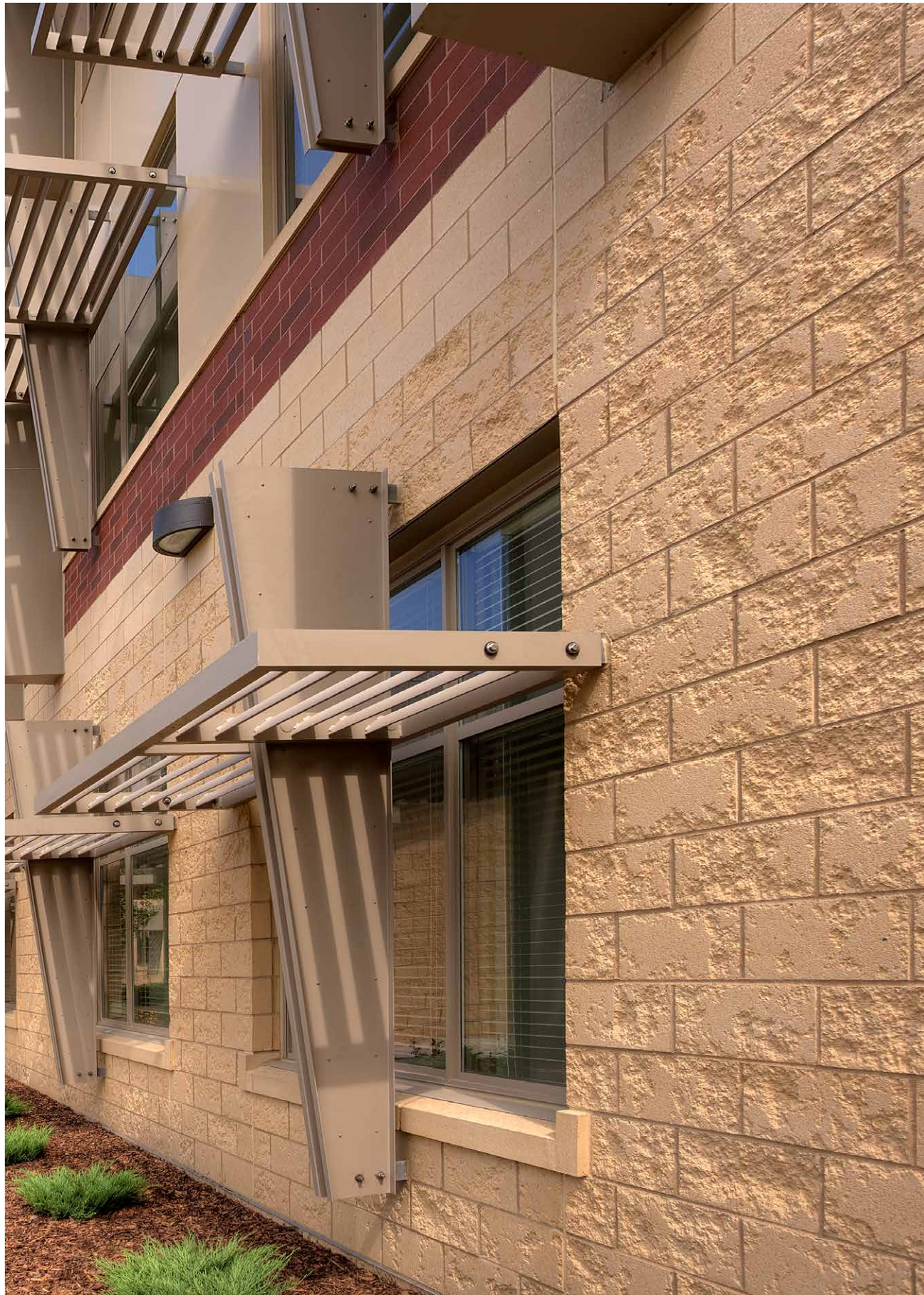
Product colors vary by region. Scan the QR code to see your full regional color offering. Contact your local architectural rep for slump block, ribbed units and designer texture options.





Alpena County Regional Airport, RS&H  
Trendstone and Mesastone in Midwest White, Landers Bay and Saddle Tan (Alpena, MI)

 <b>ECHELON</b> MASONRY	ARCHITECTURAL CMU
	<b>TRENWYTH MASONRY</b>



# TRATTINO™

## Unique textural aesthetic of travertine

Trattino is pre-finished architectural masonry that offers a natural travertine aesthetic with the added benefits of manufactured stone. Available in both full-depth veneer and structural units, the subtle irregular organic texture adds charm and visual interest to any project.

## COLOR OPTIONS



Coral



Parchment



Rocky Road



Shadow Gray



### ADDITIONAL COLORS AVAILABLE

Product colors vary by region. Scan the QR code to see your full regional color offering.



# MESASTONE®

## Enduring natural color and uniform texture

Mesastone pre-finished concrete masonry units are made with specially colored aggregates and pigment. The face of each architectural unit is finished to expose the aggregate and create a uniform textured surface that resembles split face masonry, but without the characteristic divots, making it easier to lay up and providing a straighter sight line. Also available as a full depth veneer.

## COLOR OPTIONS



Knight Gold



Cookies & Cream



Rocky Road



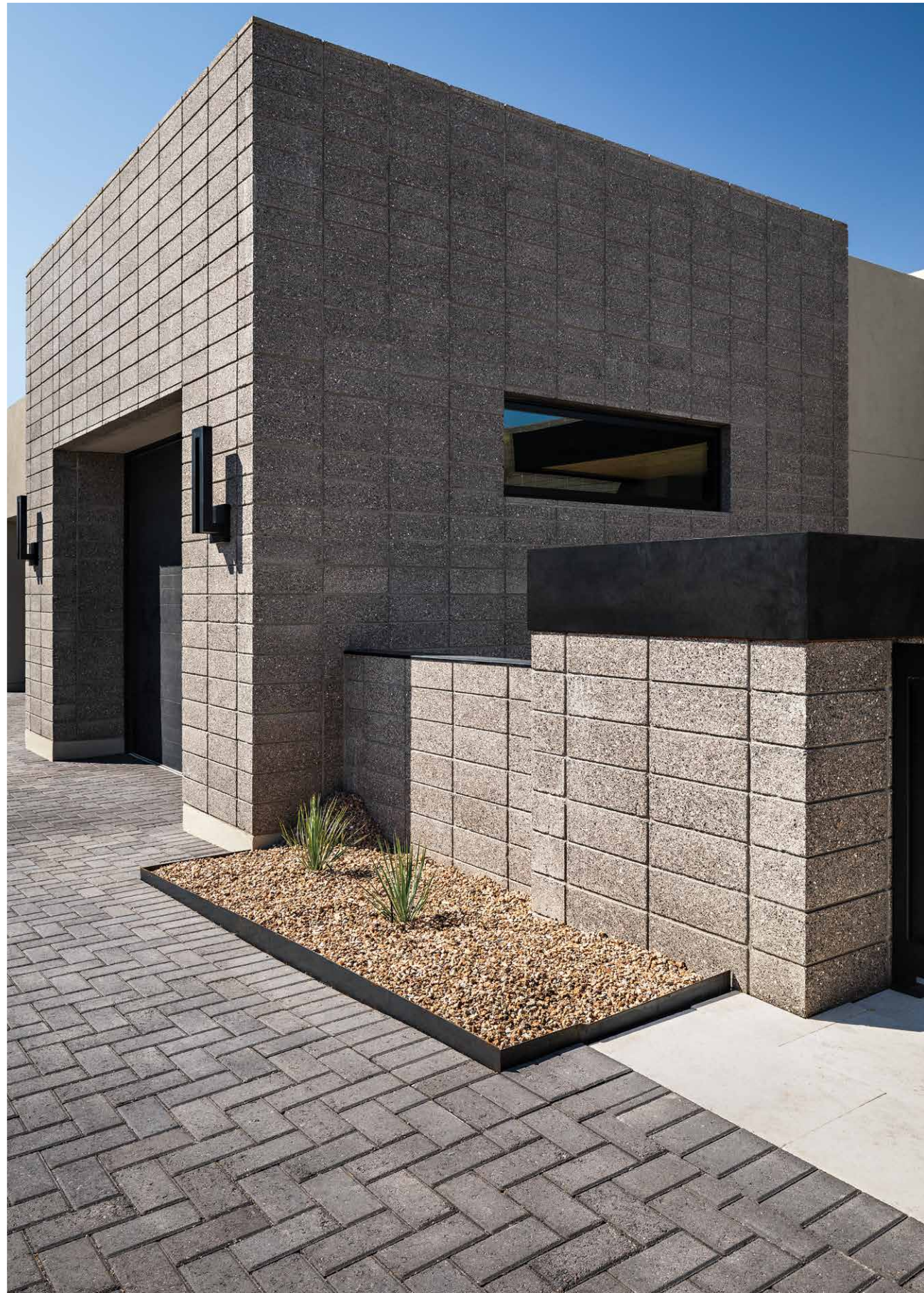
Shadow Grey



### ADDITIONAL COLORS AVAILABLE

Product colors vary by region. Scan the QR code to see your full regional color offering.





# TRENDSTONE®

## Durability, with a vibrant ground stone look

Trendstone goes beyond standard ground face concrete masonry by applying a clear satin gloss acrylic to the exposed face of each concrete masonry unit. This process accentuates the natural beauty of the aggregates and provide moisture resistance for added durability.

Also available as a lightweight (adhered) and full depth (anchored) veneer.

## COLOR OPTIONS



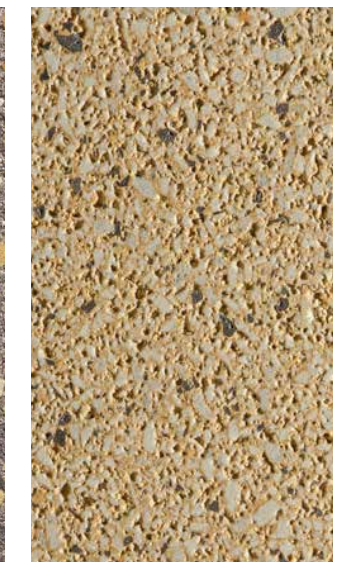
Springfield



Almond Bark



Ash Charcoal



Knight Gold




### ADDITIONAL COLORS AVAILABLE

Product colors vary by region. Scan the QR code to see your full regional color offering.





 <b>ECHELON</b> MASONRY	ARCHITECTURAL CMU
	<b>STRUCTURAL BRICK</b>



# QUIK-BRIK® TRADITIONAL

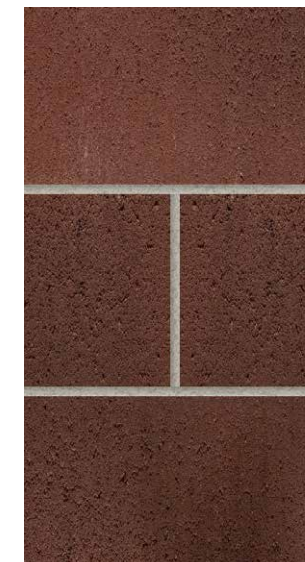
## Classic brick aesthetics in a single-wythe package

Quik-Brik is a durable and efficient structural masonry option that offers the rich look of brick in a variety of shades. With nationally available color options, Quik-Brik is the ideal choice for retailers who demand consistency nationwide. Physical performance, usability, and cost effectiveness have earned Quik-Brik its unrivaled reputation among architects and contractors alike.

## COLOR OPTIONS



Autumn



Heritage



Earthtone



Wilkesboro



### ADDITIONAL COLORS AVAILABLE

Product colors vary by region. Scan the QR code to see your full regional color offering.





# HARVARD BRIK®

## Rich color blends for the look of craftsman-era brick

Harvard Brik provides a blended finish so authentic, brick masons of the past are smiling. It offers all of the benefits and efficiencies of Quik-Brik with a unique blended color palette and an integral color process that accentuates architecture with durable color fastness.

## COLOR OPTIONS



Ash Blend



Cherokee



Deer Creek



Monument White



### ADDITIONAL COLORS AVAILABLE

Product colors vary by region. Scan the QR code to see your full regional color offering.



# FOUNDER'S FINISH

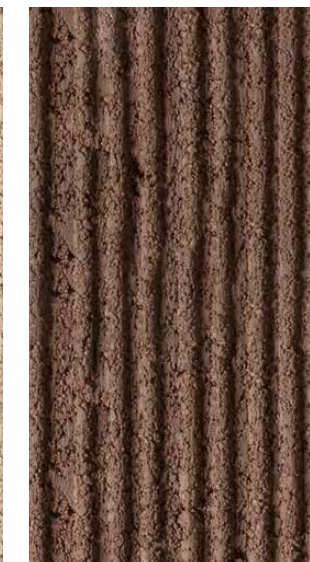
## Multi-textural striations for a unique brick aesthetic

Founder's Finish structural brick enhances traditional brick aesthetics with the appearance of hand-tooled striations. The multi-textural effect adds a distinctive look to any masonry project and can be paired with other masonry units for additional design flexibility.

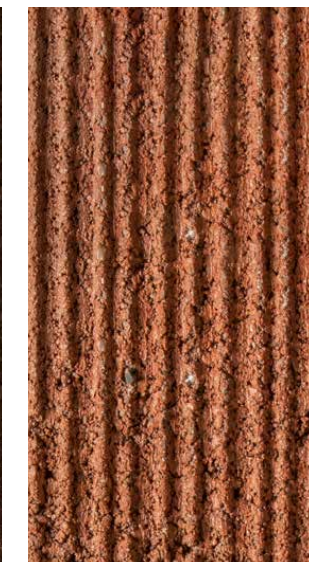
## COLOR OPTIONS



Bone



Maurus



Canyon



Platinum



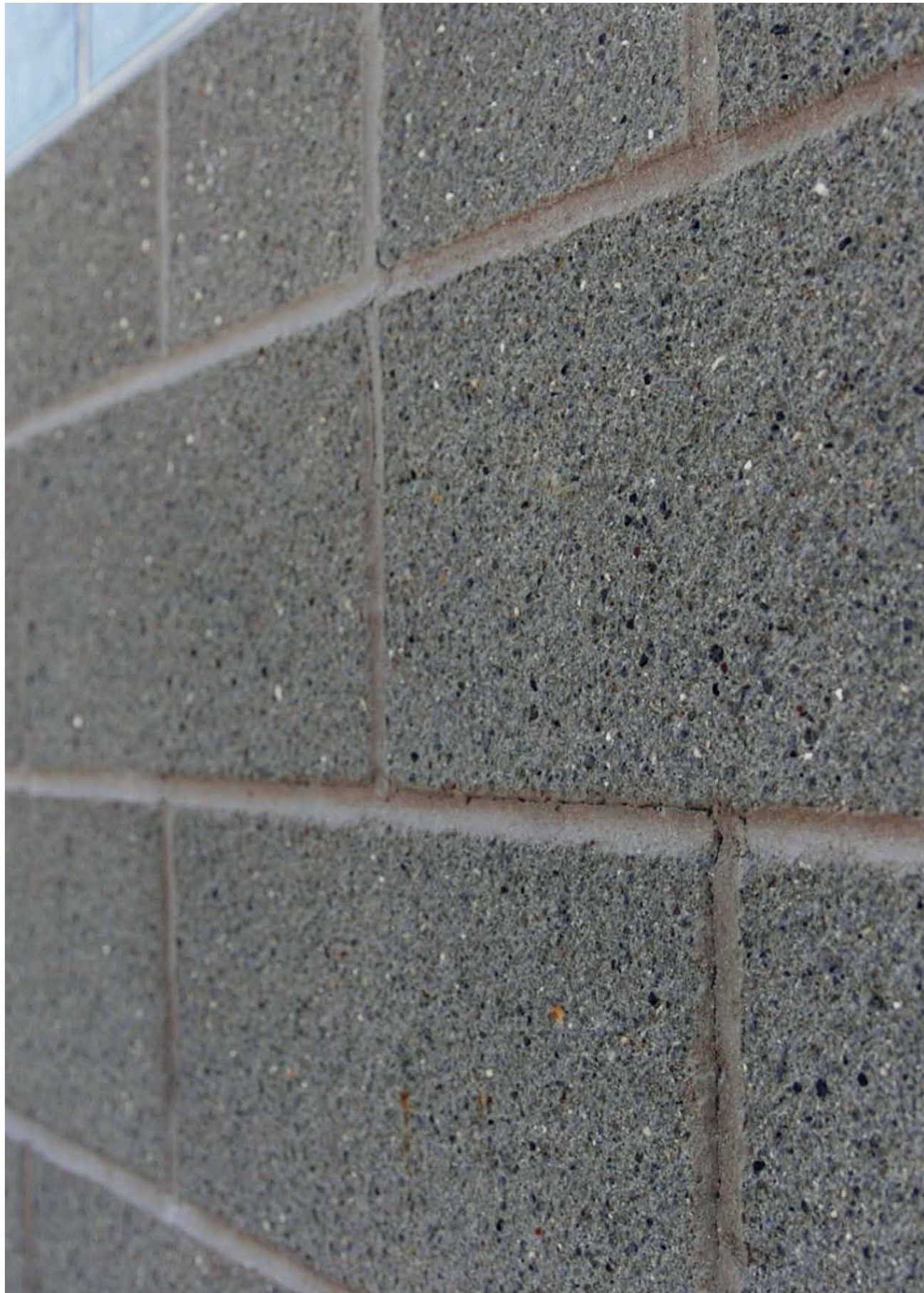
### ADDITIONAL COLORS AVAILABLE

Product colors vary by region. Scan the QR code to see your full regional color offering.



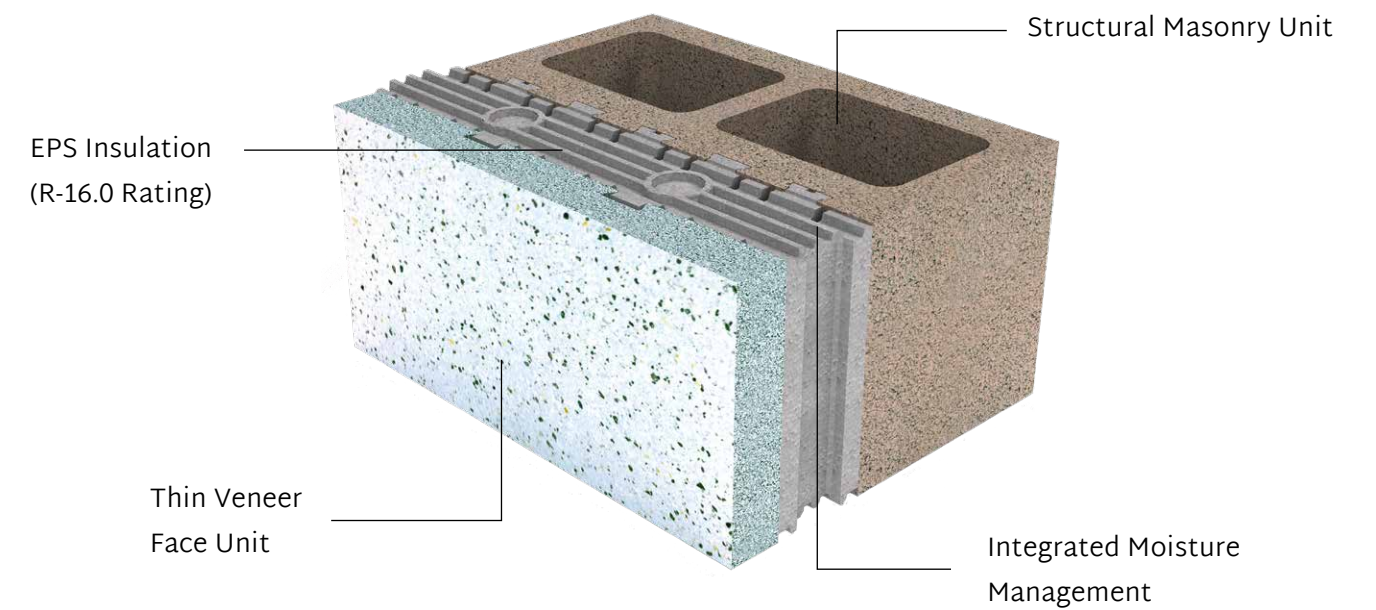


 <b>ECHELON</b> MASONRY	MASONRY SYSTEMS
	<b>PERFORMANCE ENHANCEMENTS</b>



# THERMAL PERFORMANCE

**The patented InsulTech™ Insulated Concrete Masonry System (ICMS)**  
 The InsulTech system is a thermally-broken, continuous-insulated system that delivers unmatched R-16.0 performance. Each single, preassembled unit includes structural CMU, EPS insulation with drainage channels, and a veneer face. Both the structural block and exterior veneer are available in either standard finishes or Trenwyth architectural finishes for design flexibility.



**MORE INFORMATION**  
 Scan the QR code for more information on Echelon's Thermal Performance.



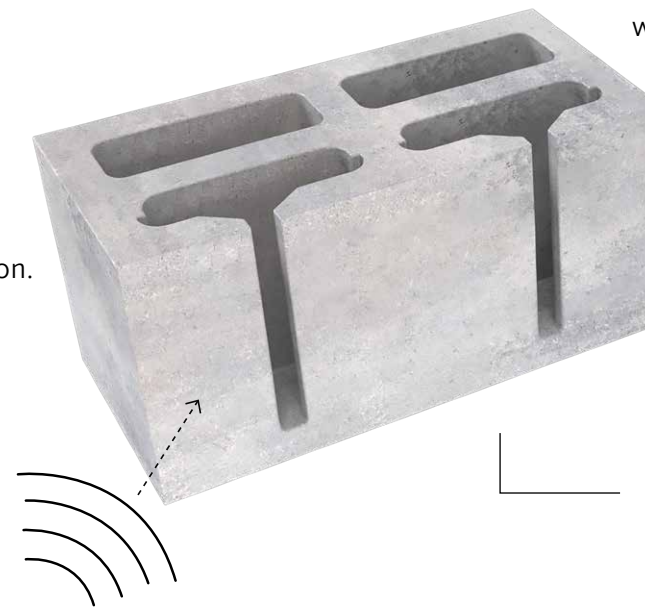


# ACOUSTIC PERFORMANCE

**The combined acoustic and aesthetic power of Acousta-Wal®**  
 Acousta-Wal sound-absorbing masonry units provide an indoor or outdoor solution for sound control, achieving NRCs of up to .85. The unique design absorbs sound waves of all frequency, even the difficult-to-control low frequencies. With a closed top and vertical slots that expose the inner cavity, Acousta-Wal is an upgrade option for many Echelon masonry units, providing a great deal of design flexibility.

Single trade installation of finished load-bearing or non-load-bearing walls saves time and money.

Designed to absorb all sound frequencies and control sound transmission.



A single unit provides the surface color and texture along with sound control.



**MORE INFORMATION**  
 Scan the QR code for more information on Echelon's Acoustic Performance.



# MOISTURE PERFORMANCE

## The protection of an Integral Water Repellent System

All Echelon Masonry units can be manufactured with integral water repellent. When specified for masonry in conjunction with Amerimix mortars, our system achieves best-in-class protection against moisture intrusion.



Echelon's water repellent technology is a two-part system that is integrated into both the block and mortar, creating a continuous protection system that's delivered to your site, ready to go.

Our integral water repellent bonds to the capillary pores of the CMU and mortar inhibiting water from migrating through the block.



### MORE INFORMATION

Scan the QR code for more information on Echelon's Moisture Performance.



OLDCASTLE APG,  
**BRANDS THAT TRANSFORM.**



**OUTDOOR FLOORING**

Best-in-class underfoot surfaces that are exceptional on every level, like the durable beauty of Belgard® pavers.



**SHADE, SECURITY & PRIVACY**

Stylish and functional solutions for keeping your space covered, safe and secure, like ActiveYards® vinyl fencing, innovative RDI™ railing, and Barrette Outdoor Living® pergolas and privacy screens.



**LANDSCAPING**

Creation and maintenance of healthy, integrated exterior spaces with edging, coping and steps from Belgard® and soil, mulch, and decorative stone from our numerous lawn & garden brands.



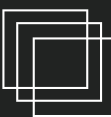
**BACKYARD FEATURES**

Adding fun, function and focal points with features like PebbleTec® fire bowls, water features and decorative fixtures; Belgard® outdoor fire features and kitchens; and Elements™ kitchen appliances and accessories.



**SET, SEAL & REPAIR**

Everything needed to connect, protect and repair outdoor building materials with products like Sakrete® concrete mixes, Amerimix® mortars and grouts, and Techniseal® paver sealants, cleaners and jointing materials.

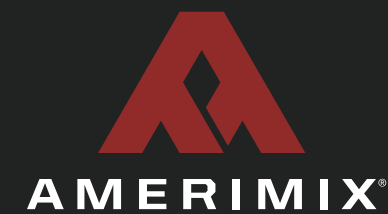


**WALL SURFACES**

Finishes and exterior construction elements designed to endure, like Echelon® veneers and wall systems, Belgard® retaining walls, and PebbleTec® pool finishes.



OLDCASTLEAPG.COM/OUR-BRANDS



**WHY AMERIMIX?**

**It's Time to Ditch the Sand Pile.** For construction professionals who want the most out of their mortar, Amerimix is a better, more efficient way to build. Our pre-blended mortar, grout and stucco mixes are developed by contractors for contractors — providing consistency backed by proven results.



**MORTAR • STUCCO • GROUT**



#### MAIN OFFICE

4150 W Turney Ave.  
Phoenix, AZ 85019  
800.366.7877

#### MANUFACTURING FACILITIES

Superlite West Phoenix

Superlite Highland

Superlite Western

Superlite Gilbert

Superlite Lone Butte

Superlite Tucson

[EchelonMasonry.com](https://www.EchelonMasonry.com)

All Products, logos and/or tag lines that contain a service mark, trademark or registered trademark notice referenced herein are trademarks or registered trademarks of Oldcastle<sup>®</sup> APG Architectural, Oldcastle<sup>®</sup> APG, Inc. or its subsidiaries unless specifically noted. Registered trademarks of Oldcastle APG include, but may not be limited to: Trenwyth<sup>®</sup>, Amerimix<sup>®</sup>, Quik Brik<sup>®</sup>, Artisan Masonry Stone Veneers<sup>®</sup> and Belgard<sup>®</sup>.

RainBloc<sup>®</sup> and RainBloc GP<sup>®</sup> are registered trademarks of ACM Chemistries. RainBloc GP US Patent No. 8,747,550.

© Copyright 2023 Oldcastle. All Rights Reserved. ECH23-D-96251