



ECHELON
MASONRY

22456



INSULTECH™

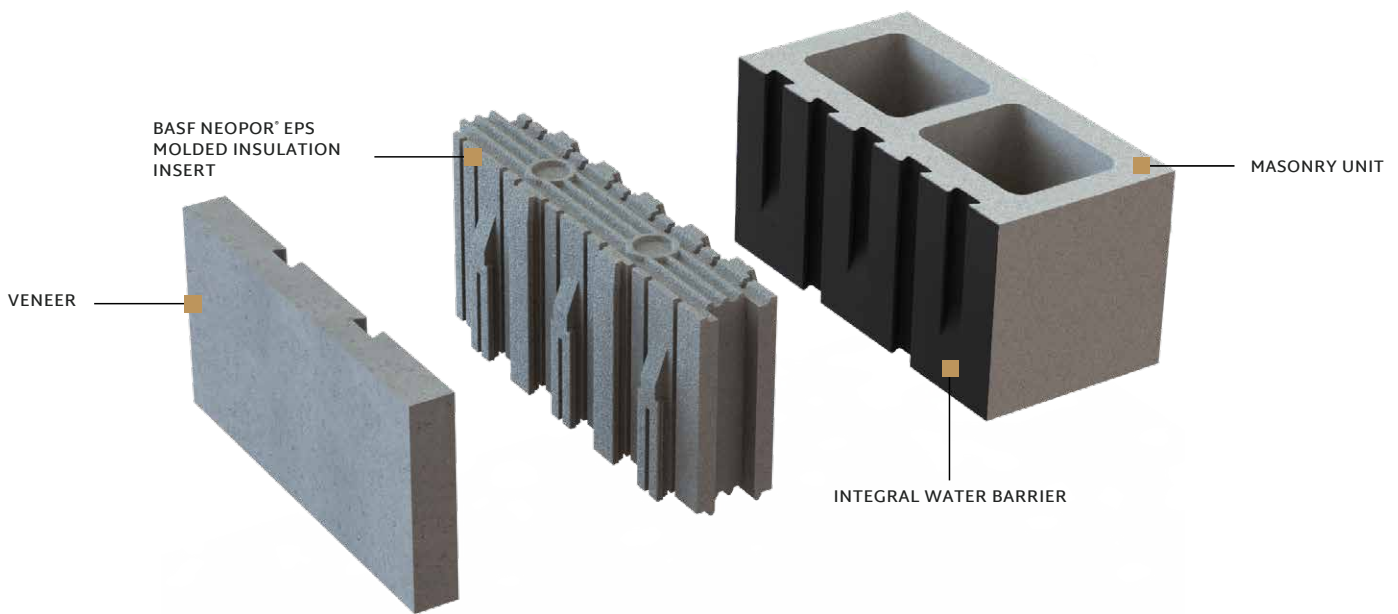
INSULATED CONCRETE MASONRY SYSTEM



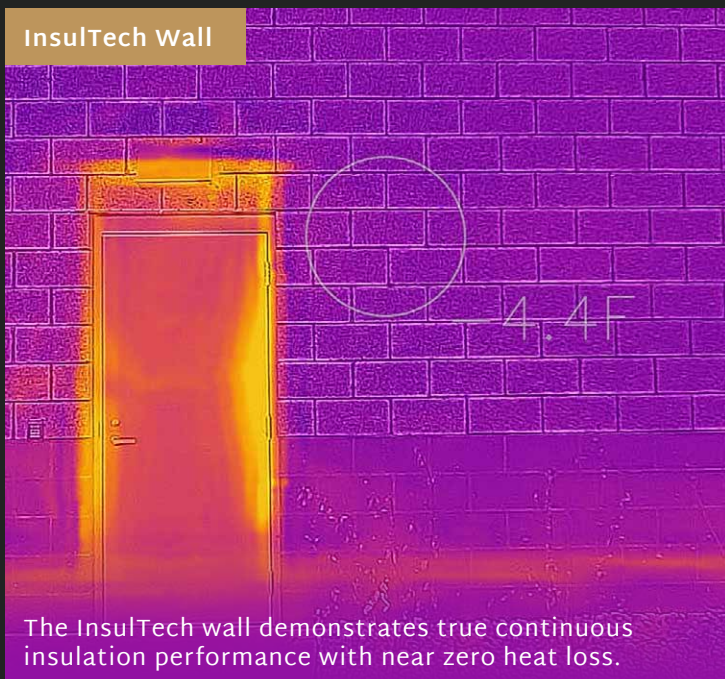
ENERGY EFFICIENCY MEETS DESIGN FLEXIBILITY

A COMPLETE MASONRY SYSTEM

InsulTech provides a complete, high-efficiency solution by combining structural CMU, R-16.0 insulation and decorative veneer face in a single, pre-assembled 12 1/4" unit.



InsulTech Wall



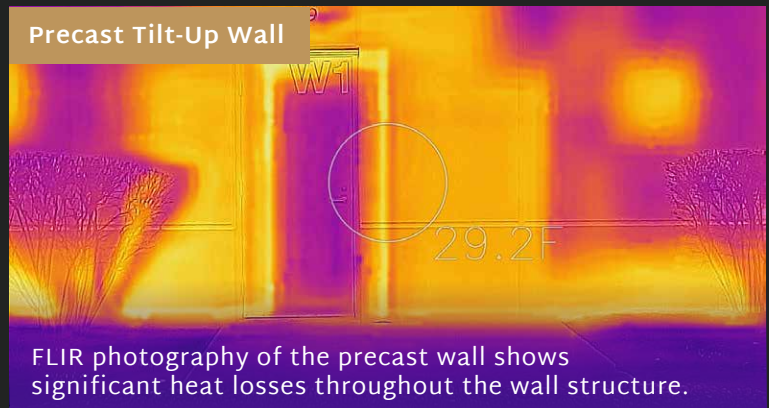
The InsulTech wall demonstrates true continuous insulation performance with near zero heat loss.

ENGINEERED FOR EFFICIENCY

This complete, thermally broken system boasts an R-value of R-16.0, dramatically improving energy efficiency.

VS

Precast Tilt-Up Wall



FLIR photography of the precast wall shows significant heat losses throughout the wall structure.



ACHIEVE MORE WITH A SINGLE UNIT



ENERGY EFFICIENCY

Insultech provides an R-value of 16.0 at 75°F and meets 2015, 2018 & 2021 IECC energy codes from zones 1 through 7.



MOISTURE MANAGEMENT

Molded drainage channels within the GPS inserts, combined with closed cell PVC gasket material, provides continuous insulation, air tightness and superior moisture management.



ACOUSTICS

Combined insulation and masonry unit provide increased acoustical comfort achieving an STC rating of 52 and OITC rating of 44 for a partially grouted wall.



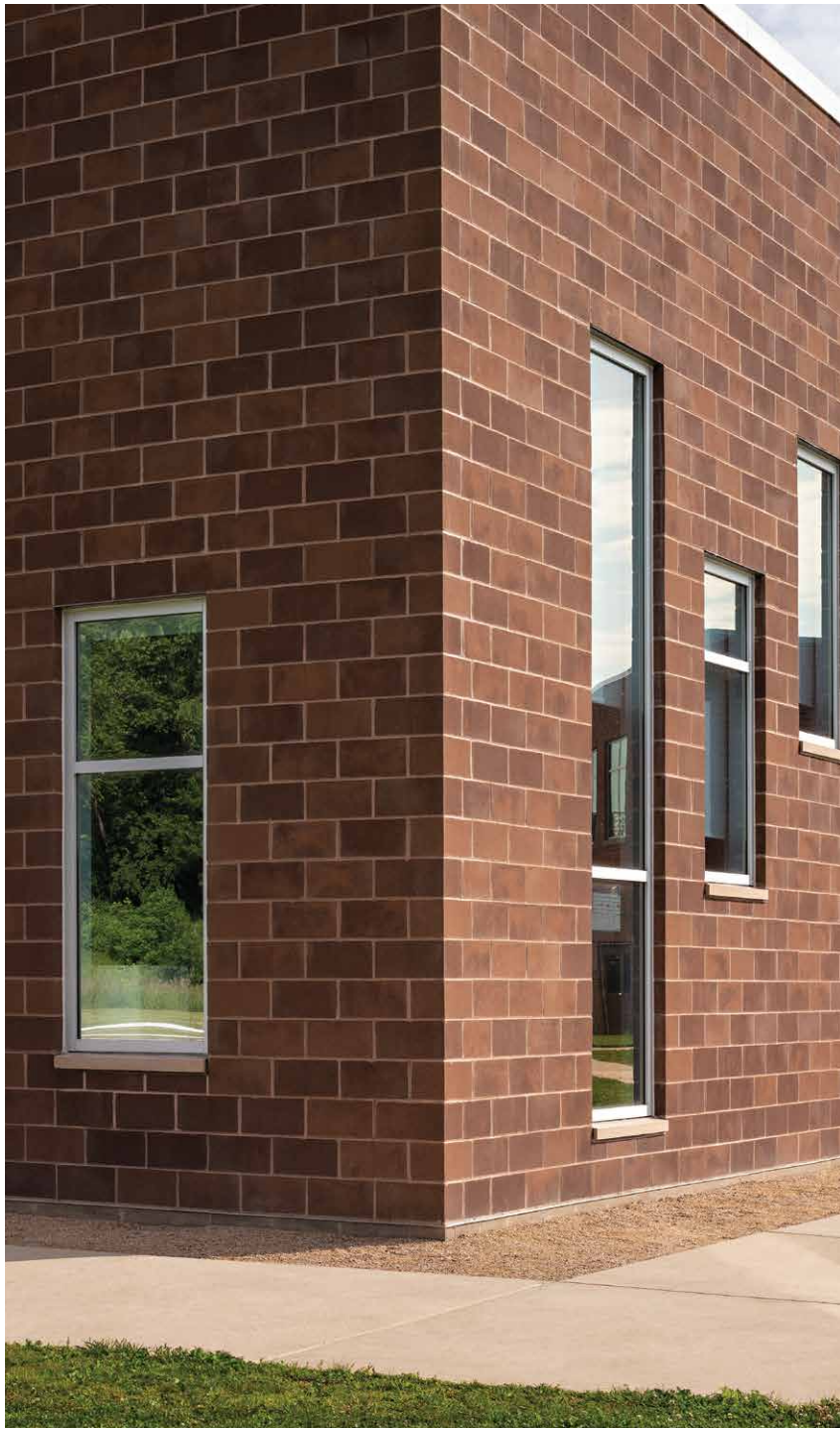
FIRE SAFETY

InsulTech unit assemblies provide a 4.0 hour fire rating.



EASE OF INSTALL

The ability to construct InsulTech from the interior or exterior of the building with a a single scaffold greatly accelerates installation time and simplifies project planning.

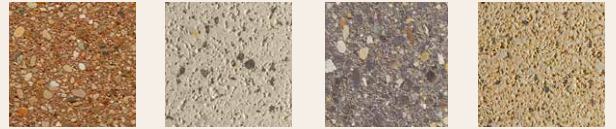


VENEER OPTIONS

CORDOVA STONE



TRENDSTONE



MESASTONE



SMOOTH FACE



UNMATCHED AESTHETICS

The InsulTech system can be finished with any Echelon Masonry veneer to exceed your design criteria.



Scan to view more
Veneer Options



INSULTECH WALL SYSTEM

CONCRETE MASONRY UNITS



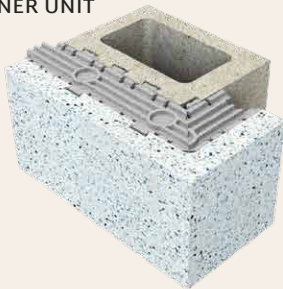
LEFT HAND CORNER CONTINUATION UNIT



LEFT HAND L-CORNER UNIT



RIGHT HAND L-CORNER UNIT

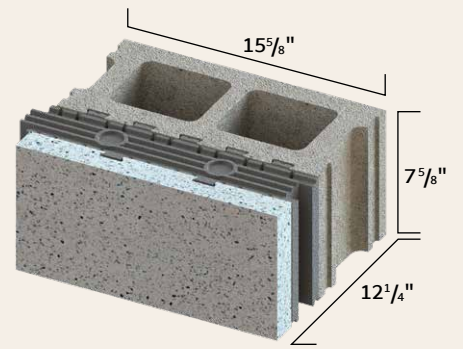


RIGHT HAND CORNER CONTINUATION UNIT



FULL HEIGHT UNITS

Full Height InsulTech CMU assemblies are available with 6", 8", 10" and 12" CMU backup units for different structural requirements.



CLOSED END STRETCHER UNIT



OPEN END STRETCHER UNIT



DOUBLE SASH UNIT



HALF SASH UNIT - LEFT/RIGHT



RIGHT HAND L-CORNER UNIT



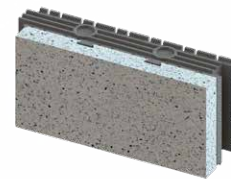
LEFT HAND L-CORNER UNIT



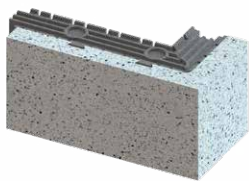
LEFT HAND CORNER CONTINUATION UNIT



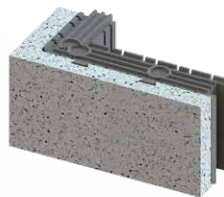
RIGHT HAND CORNER CONTINUATION UNIT



16" FACE WITH PROFILED INSERT FOR BOND BEAM AND VENEERING



RIGHT HAND L-CORNER UNIT FACE WITH PROFILED INSERT FOR BOND BEAM AND VENEERING



LEFT HAND L-CORNER UNIT FACE WITH PROFILED INSERT FOR BOND BEAM AND VENEERING



LEFT HAND L-JAMB BLOCK UNIT



RIGHT HAND L-JAMB BLOCK UNIT



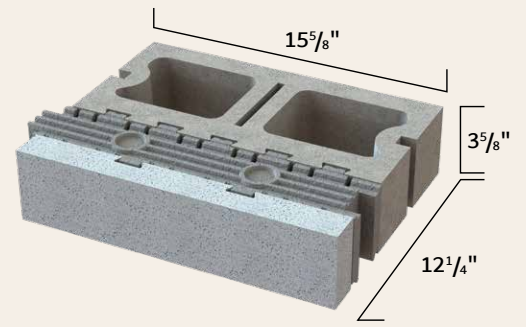
8" BOND BEAM UNIT



HORIZONTAL GASKET

HALF HIGH UNITS

Half High InsulTech unit assemblies are only available with an 8" CMU backup unit.



H-H CLOSED END STRETCHER UNIT



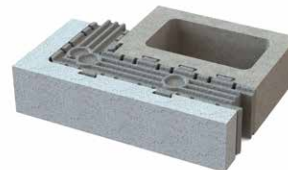
H-H OPEN END STRETCHER UNIT



H-H DOUBLE SASH STRETCHER UNIT



H-H HALF SASH UNIT - LEFT / RIGHT



H-H LEFT HAND L-CORNER UNIT



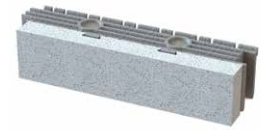
H-H LEFT HAND CORNER CONTINUATION UNIT



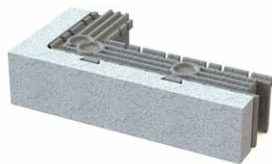
H-H RIGHT HAND L-CORNER UNIT



H-H RIGHT HAND CORNER CONTINUATION UNIT



H-H 16" FACE WITH INSERT FOR BOND BEAM AND VENEERING



H-H LEFT HAND L CORNER FACE WITH INSERT FOR BOND BEAM AND VENEERING



H-H RIGHT HAND L CORNER FACE WITH INSERT FOR BOND BEAM AND VENEERING



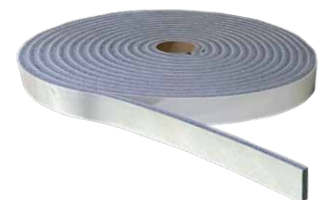
H-H BOND BEAM CMU



H-H LEFT HAND L JAMB BLOCK UNIT



H-H RIGHT HAND L JAMB BLOCK UNIT



HORIZONTAL GASKET



[Learn More](#)

EchelonMasonry.com



All Products, logos and/or tag lines that contain a service mark, trademark or registered trademark notice referenced herein are trademarks or registered trademarks of Oldcastle® APG Architectural, Oldcastle® APG, Inc. or its subsidiaries unless specifically noted.

© Copyright 2023 Oldcastle. All Rights Reserved. ECH23-D-96150